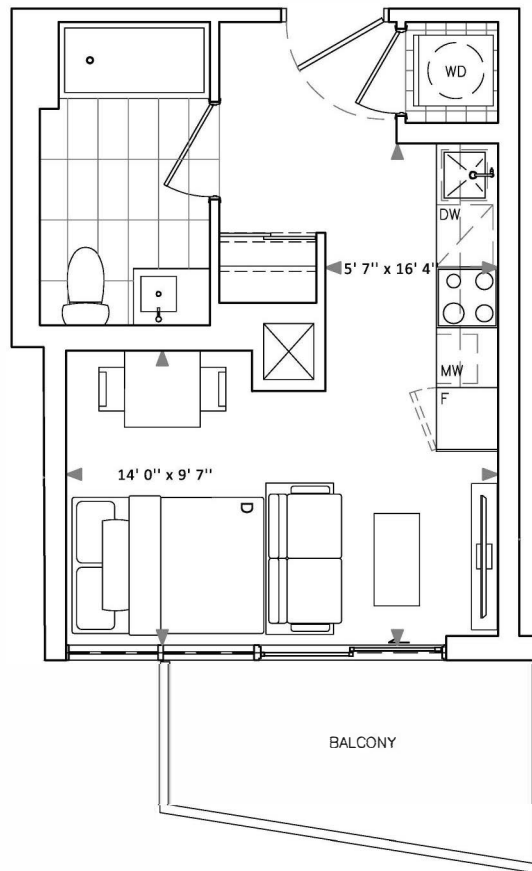


Interior: 321 Sq Ft Exterior: 74 Sq Ft

**Total: 395 Sq Ft**



# THE TWELVE HUNDRED

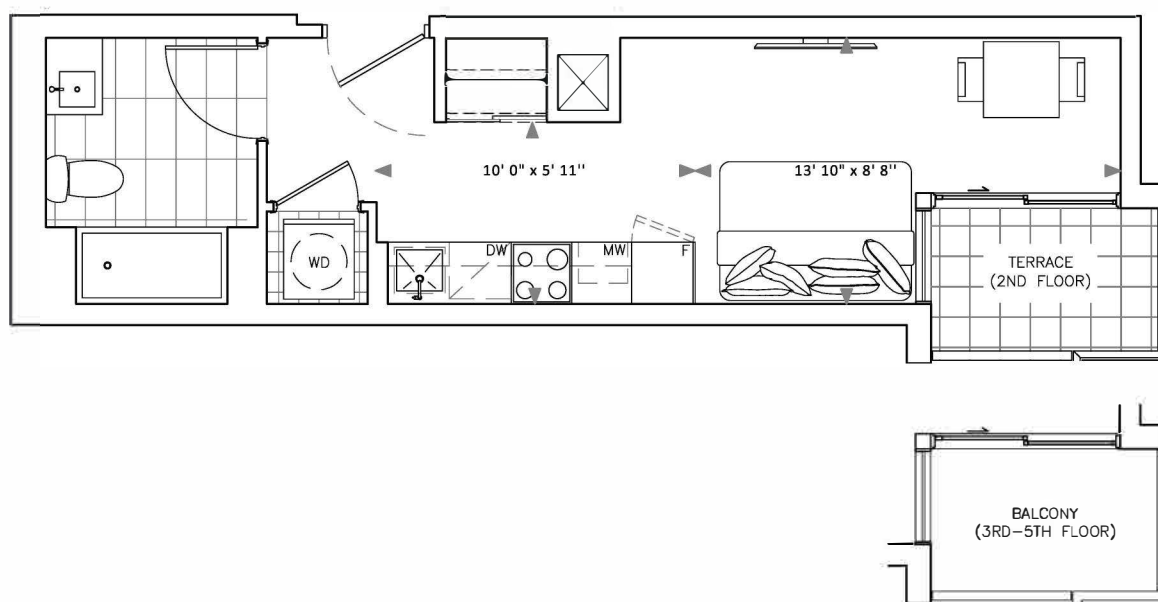
# A2

Interior: 324 Sq Ft    Exterior (terr.): 37 Sq Ft

**Total: 361 Sq Ft**

Exterior (balc.): 37 Sq Ft

**Total: 361 Sq Ft**



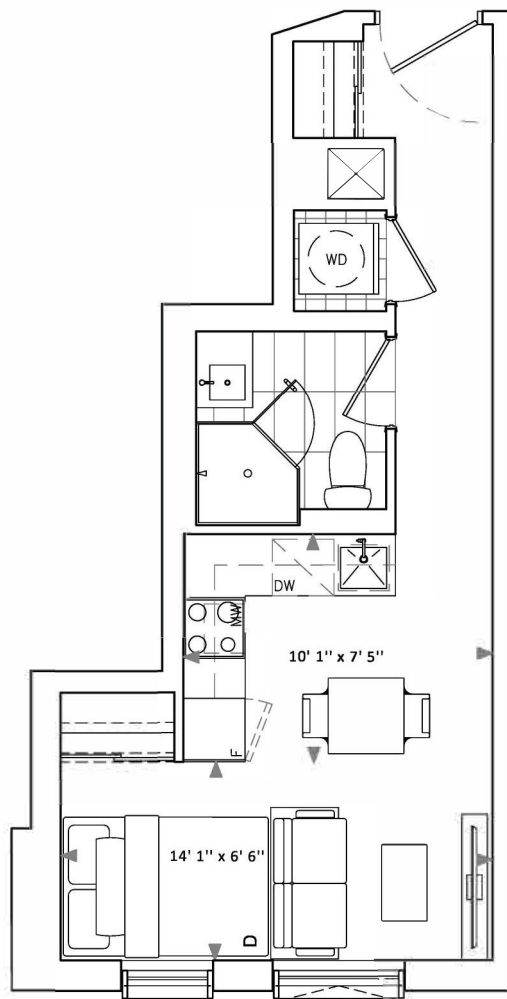
Fieldgate  
Urban

Dimensions, specifications, layouts and materials are approximate only and are subject to change without notice. Window sizes and locations may vary. Furniture is for illustration purposes only and does not necessarily reflect the electrical plan for the suite. Suites are sold unfurnished. Actual useable floor space within the unit may be different from stated floor areas or dimensions on this plan. For more information on the method used for calculating the floor area of any unit, please refer to Builder Bulletin No. 22 published by Tarion. Balcony and terrace area is approximate and not included in net suite area. The actual unit purchased may be a reverse layout to the plan shown. E.&O.E.

Interior: 356 Sq Ft

Exterior: 0 Sq Ft

**Total: 356 Sq Ft**



Fieldgate  
Urban

Dimensions, specifications, layouts and materials are approximate only and are subject to change without notice. Window sizes and locations may vary. Furniture is for illustration purposes only and does not necessarily reflect the electrical plan for the suite. Suites are sold unfurnished. Actual useable floor space within the unit may be different from stated floor areas or dimensions on this plan. For more information on the method used for calculating the floor area of any unit, please refer to Builder Bulletin No. 22 published by Tarion. Balcony and terrace area is approximate and not included in net suite area. The actual unit purchased may be a reverse layout to the plan shown. E.&O.E.

# THE TWELVE HUNDRED

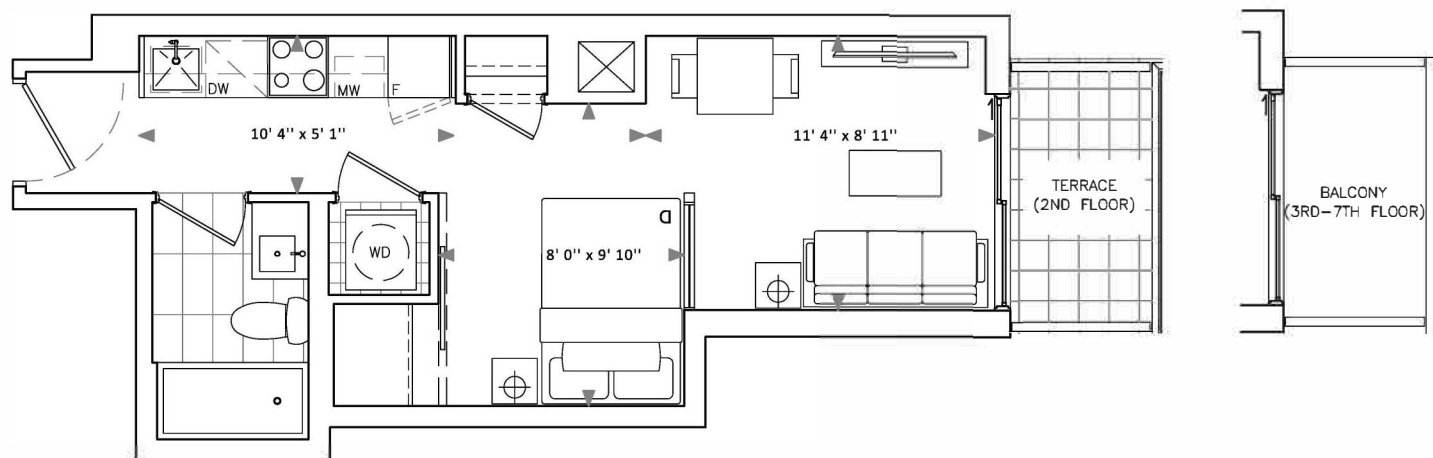
# A7

Interior: 359 Sq Ft    Exterior (terr.): 40 Sq Ft

**Total: 399 Sq Ft**

Exterior (balc.): 40 Sq Ft

**Total: 399 Sq Ft**



Fieldgate  
Urban

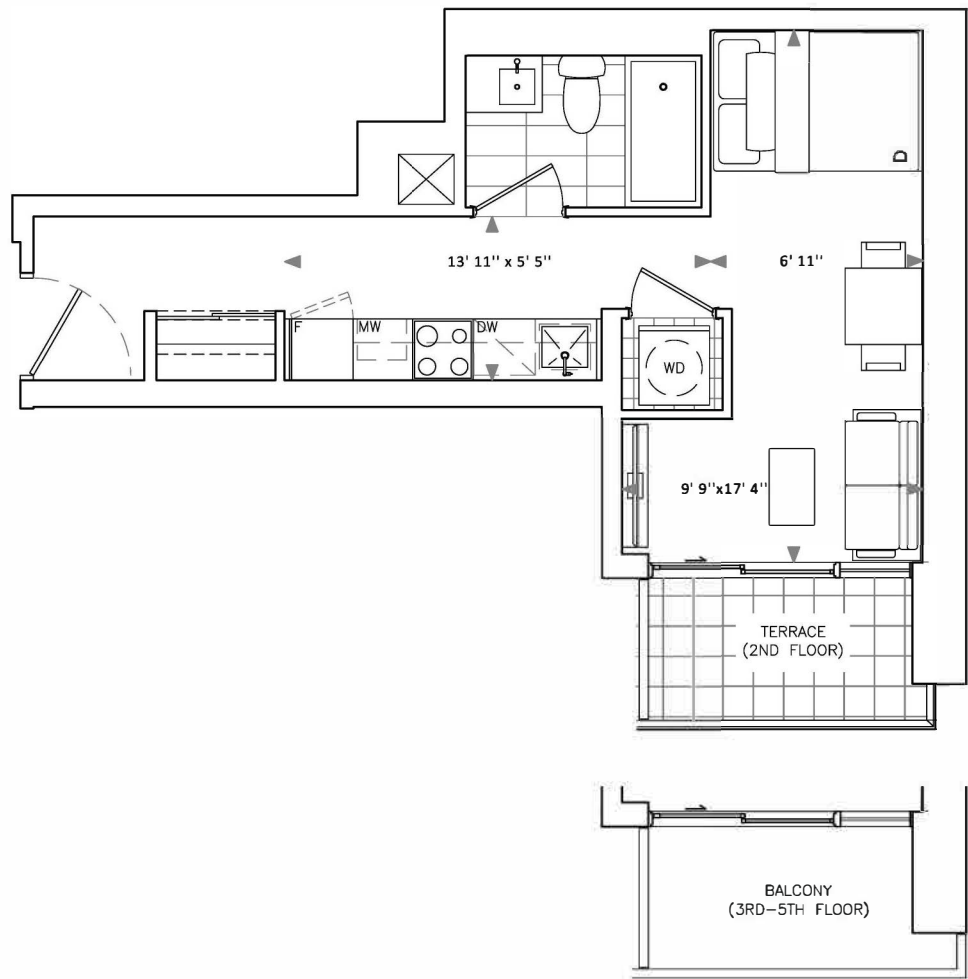
Dimensions, specifications, layouts and materials are approximate only and are subject to change without notice. Window sizes and locations may vary. Furniture is for illustration purposes only and does not necessarily reflect the electrical plan for the suite. Suites are sold unfurnished. Actual useable floor space within the unit may be different from stated floor areas or dimensions on this plan. For more information on the method used for calculating the floor area of any unit, please refer to Builder Bulletin No. 22 published by Tarion. Balcony and terrace area is approximate and not included in net suite area. The actual unit purchased may be a reverse layout to the plan shown. E.&O.E.

Interior: 366 Sq Ft    Exterior (terr.): 46 Sq Ft

**Total: 412 Sq Ft**

Exterior (balc.): 51 Sq Ft

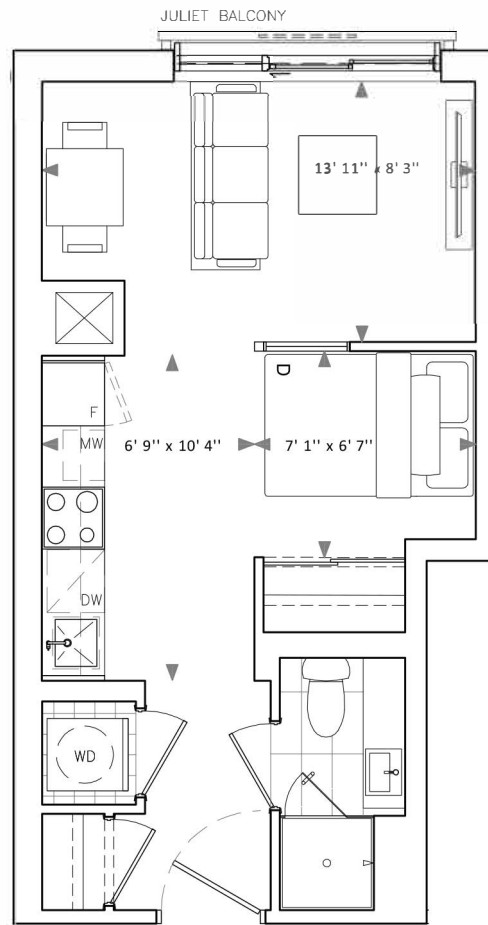
**Total: 417 Sq Ft**



# THE TWELVE HUNDRED

# A12

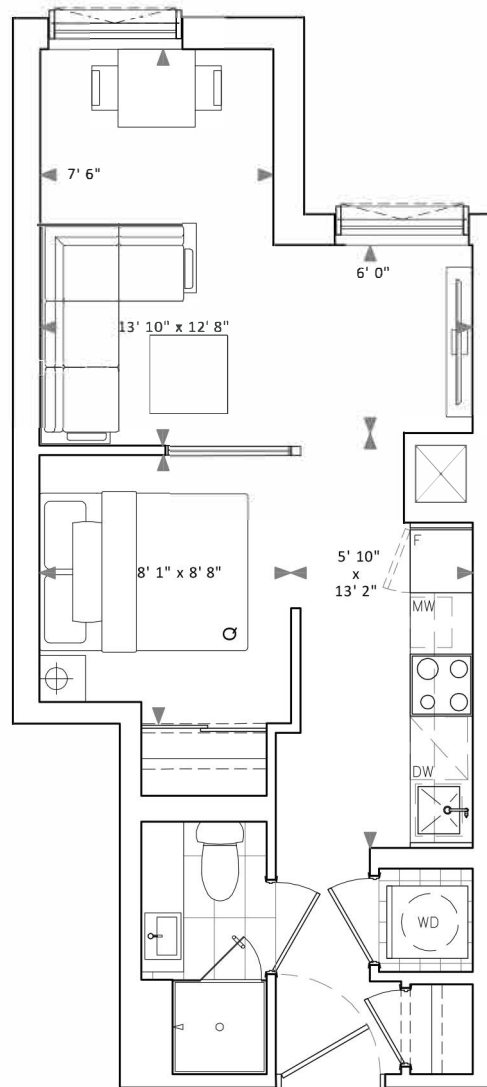
Interior: 383 Sq Ft    Exterior: 0 Sq Ft  
**Total: 383 Sq Ft**



Fieldgate  
Urban

Dimensions, specifications, layouts and materials are approximate only and are subject to change without notice. Window sizes and locations may vary. Furniture is for illustration purposes only and does not necessarily reflect the electrical plan for the suite. Suites are sold unfurnished. Actual useable floor space within the unit may be different from stated floor areas or dimensions on this plan. For more information on the method used for calculating the floor area of any unit, please refer to Builder Bulletin No. 22 published by Tarion. Balcony and terrace area is approximate and not included in net suite area. The actual unit purchased may be a reverse layout to the plan shown. E.&O.E.

Interior: 425 Sq Ft    Exterior: 0 Sq Ft  
**Total: 425 Sq Ft**

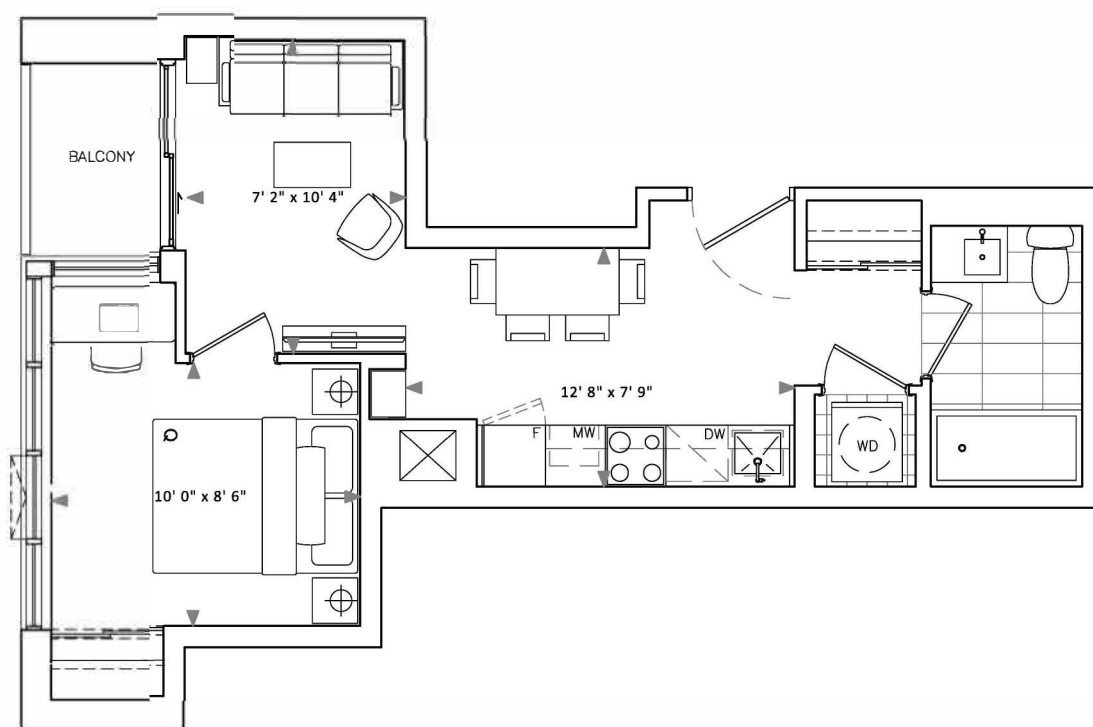


# THE TWELVE HUNDRED

# B1

Interior: 441 Sq Ft    Exterior: 28 Sq Ft

**Total: 469 Sq Ft**



Fieldgate  
Urban

Dimensions, specifications, layouts and materials are approximate only and are subject to change without notice. Window sizes and locations may vary. Furniture is for illustration purposes only and does not necessarily reflect the electrical plan for the suite. Suites are sold unfurnished. Actual useable floor space within the unit may be different from stated floor areas or dimensions on this plan. For more information on the method used for calculating the floor area of any unit, please refer to Builder Bulletin No. 22 published by Tarion. Balcony and terrace area is approximate and not included in net suite area. The actual unit purchased may be a reverse layout to the plan shown. E.&O.E.

# THE TWELVE HUNDRED

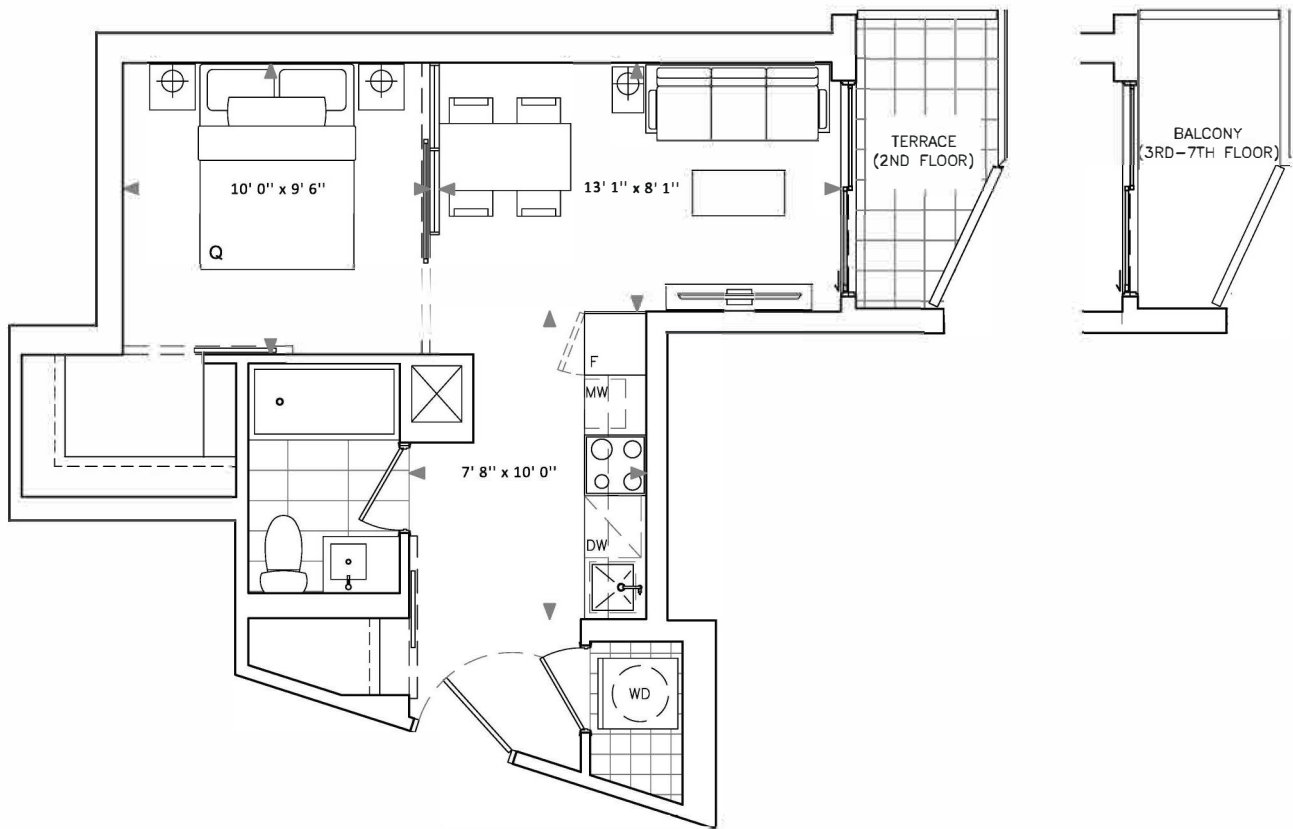
# B4

Interior: 465 Sq Ft    Exterior (terr.): 40 Sq Ft

**Total: 505 Sq Ft**

Exterior (balc.): 40 Sq Ft

**Total: 505 Sq Ft**



Fieldgate  
Urban

Dimensions, specifications, layouts and materials are approximate only and are subject to change without notice. Window sizes and locations may vary. Furniture is for illustration purposes only and does not necessarily reflect the electrical plan for the suite. Suites are sold unfurnished. Actual useable floor space within the unit may be different from stated floor areas or dimensions on this plan. For more information on the method used for calculating the floor area of any unit, please refer to Builder Bulletin No. 22 published by Tarion. Balcony and terrace area is approximate and not included in net suite area. The actual unit purchased may be a reverse layout to the plan shown. E.&O.E.

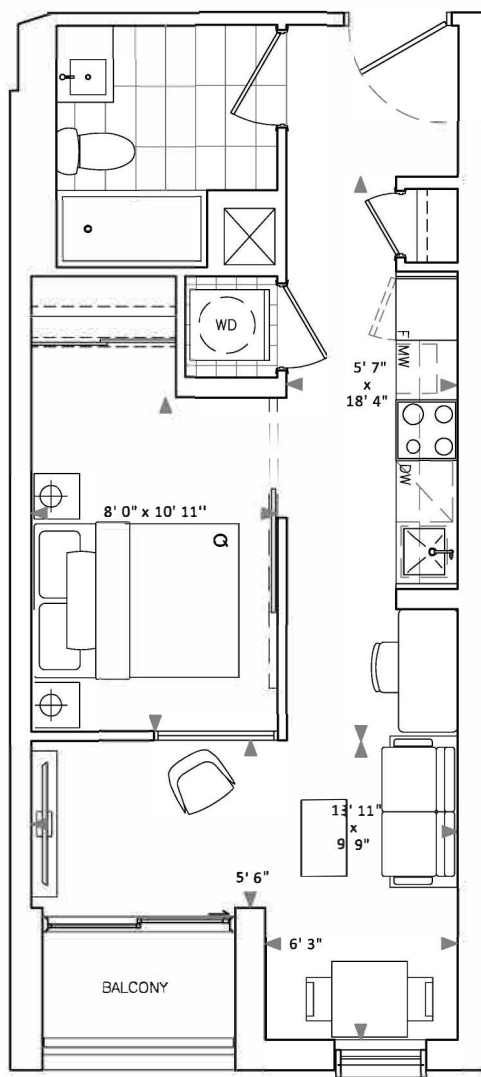
# THE TWELVE HUNDRED

# B7

Interior: 471 Sq Ft

Exterior: 25 Sq Ft

**Total: 496 Sq Ft**

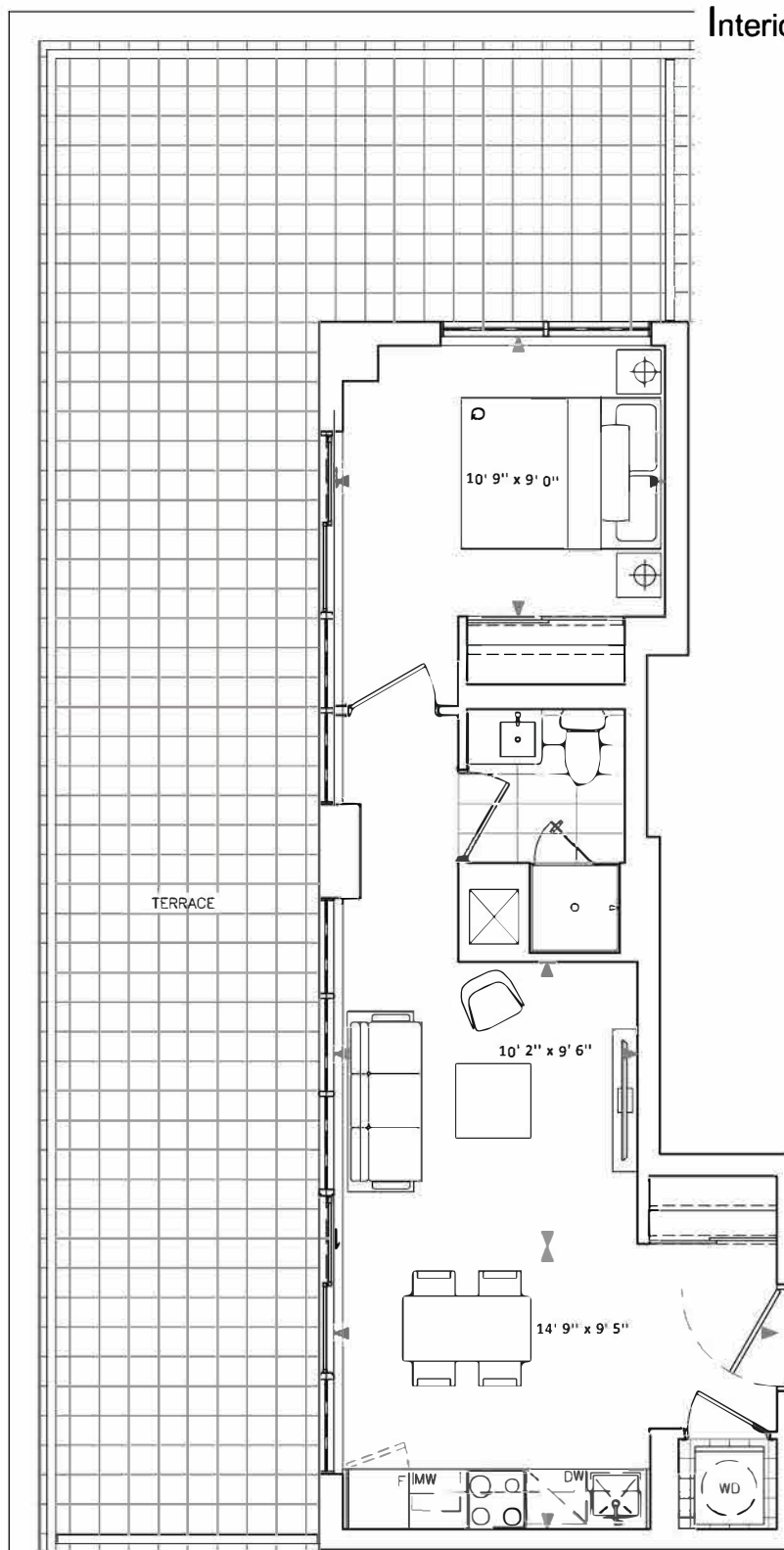


Fieldgate  
Urban

Dimensions, specifications, layouts and materials are approximate only and are subject to change without notice. Window sizes and locations may vary. Furniture is for illustration purposes only and does not necessarily reflect the electrical plan for the suite. Suites are sold unfurnished. Actual useable floor space within the unit may be different from stated floor areas or dimensions on this plan. For more information on the method used for calculating the floor area of any unit, please refer to Builder Bulletin No. 22 published by Tarion. Balcony and terrace area is approximate and not included in net suite area. The actual unit purchased may be a reverse layout to the plan shown. E.&O.E.

Interior: 525 Sq Ft Exterior: 570 Sq Ft

Total: 1095 Sq Ft



Fieldgate  
Urban

Dimensions, specifications, layouts and materials are approximate only and are subject to change without notice. Window sizes and locations may vary. Furniture is for illustration purposes only and does not necessarily reflect the electrical plan for the suite. Suites are sold unfurnished. Actual useable floor space within the unit may be different from stated floor areas or dimensions on this plan. For more information on the method used for calculating the floor area of any unit, please refer to Builder Bulletin No. 22 published by Tarion. Balcony and terrace area is approximate and not included in net suite area. The actual unit purchased may be a reverse layout to the plan shown. E.&O.E.

# THE TWELVE HUNDRED

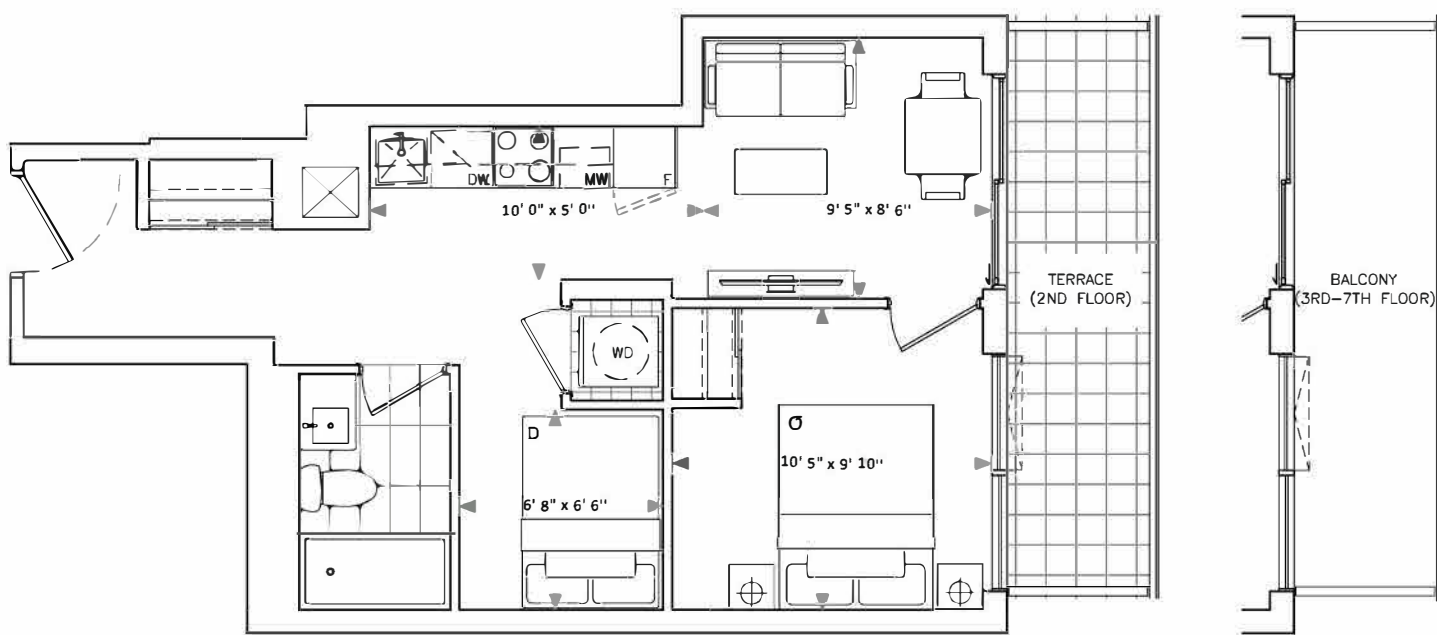
# C1

Interior: 490 Sq Ft    Exterior (terr.): 90 Sq Ft

**Total: 580 Sq Ft**

Exterior (balc.): 90 Sq Ft

**Total: 580 Sq Ft**



Fieldgate  
Urban

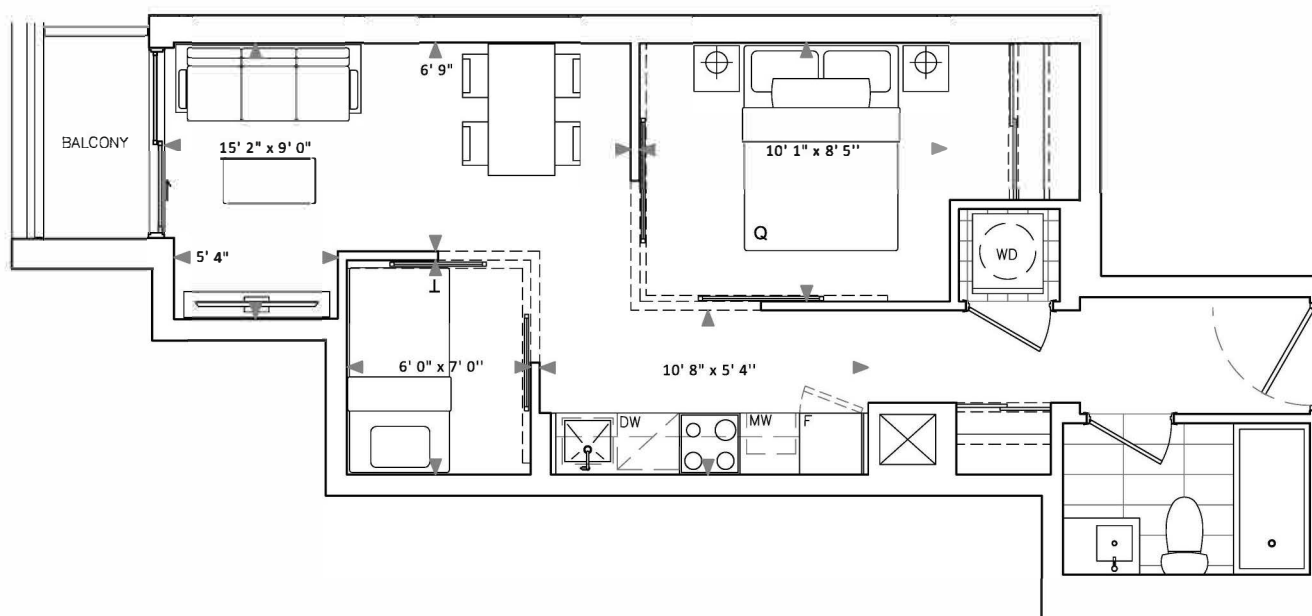
Dimensions, specifications, layouts and materials are approximate only and are subject to change without notice. Window sizes and locations may vary. Furniture is for illustration purposes only and does not necessarily reflect the electrical plan for the suite. Suites are sold unfurnished. Actual useable floor space within the unit may be different from stated floor areas or dimensions on this plan. For more information on the method used for calculating the floor area of any unit, please refer to Builder Bulletin No. 22 published by Tarion. Balcony and terrace area is approximate and not included in net suite area. The actual unit purchased may be a reverse layout to the plan shown. E.&O.E.

# THE TWELVE HUNDRED

# C2

Interior: 505 Sq Ft    Exterior: 26 Sq Ft

**Total: 531 Sq Ft**



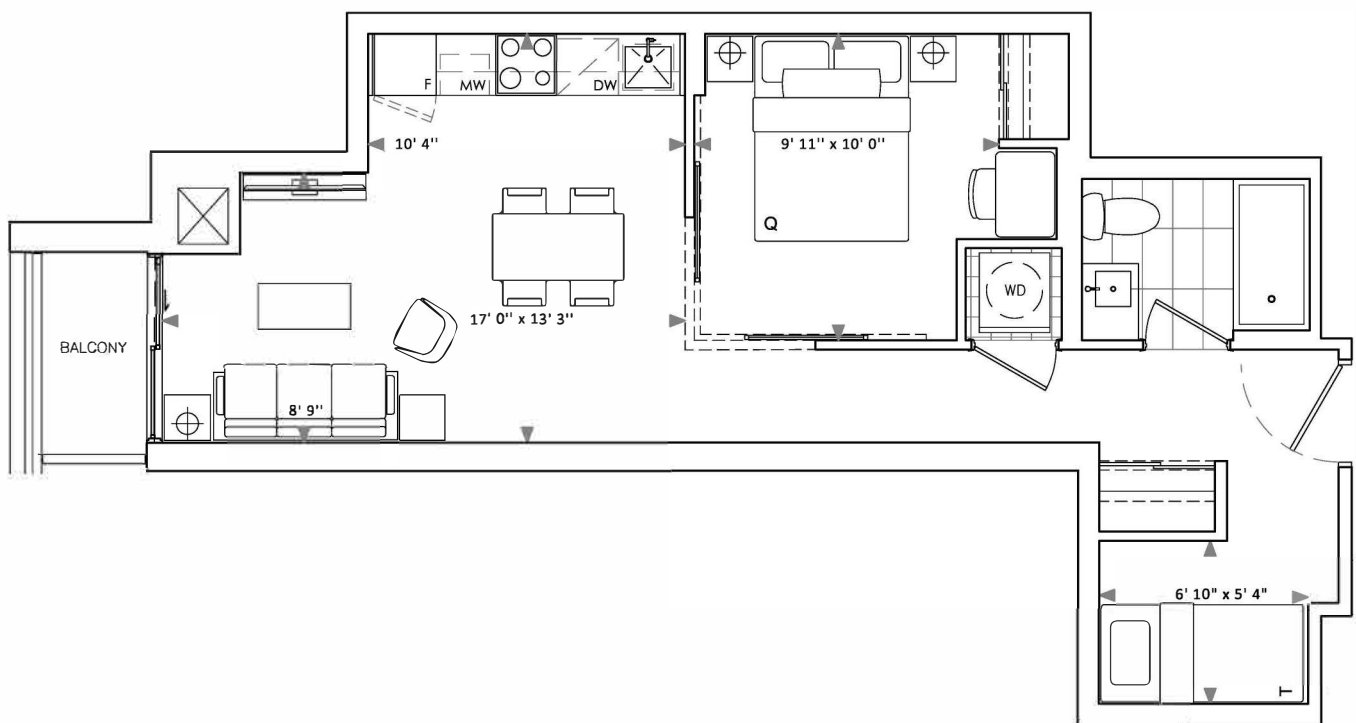
Fieldgate  
Urban

Dimensions, specifications, layouts and materials are approximate only and are subject to change without notice. Window sizes and locations may vary. Furniture is for illustration purposes only and does not necessarily reflect the electrical plan for the suite. Suites are sold unfurnished. Actual useable floor space within the unit may be different from stated floor areas or dimensions on this plan. For more information on the method used for calculating the floor area of any unit, please refer to Builder Bulletin No. 22 published by Tarion. Balcony and terrace area is approximate and not included in net suite area. The actual unit purchased may be a reverse layout to the plan shown. E.&O.E.

# THE TWELVE HUNDRED

# C6

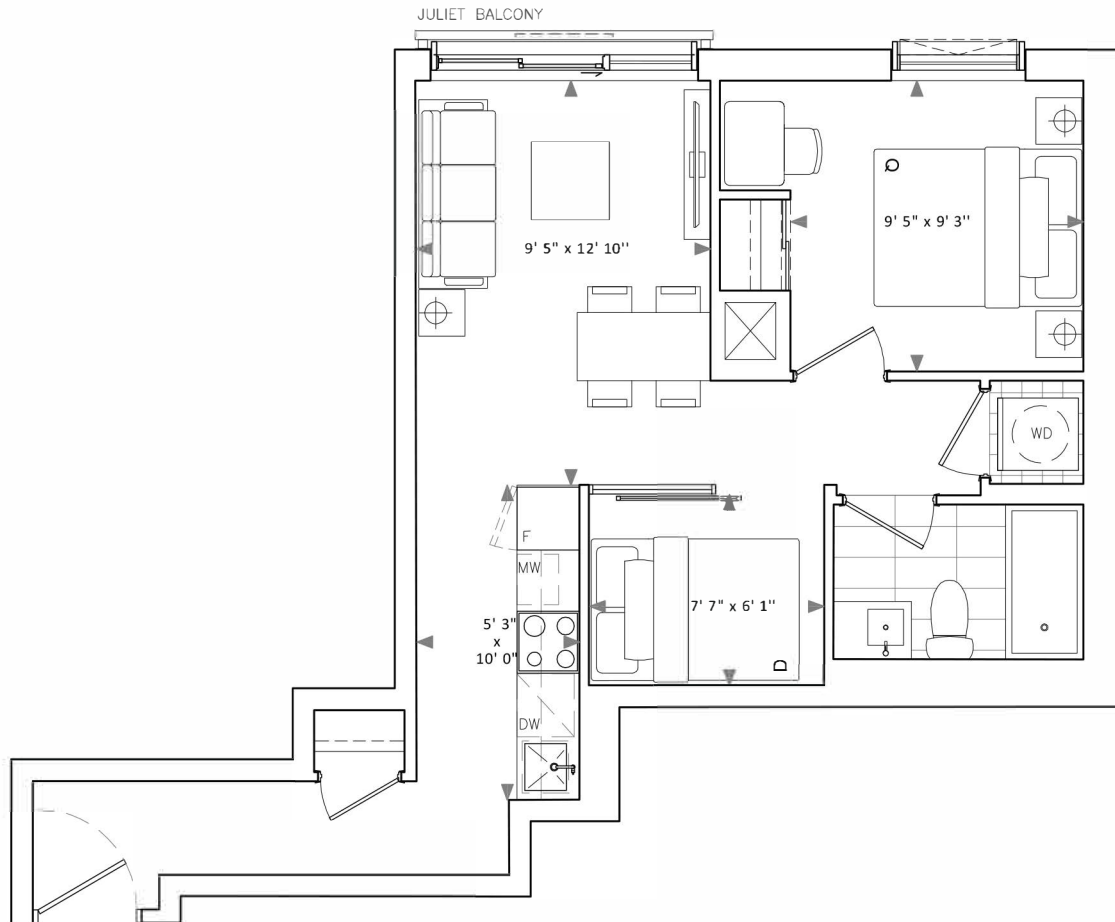
Interior: 548 Sq Ft    Exterior: 27 Sq Ft  
**Total: 575 Sq Ft**



Fieldgate  
Urban

Dimensions, specifications, layouts and materials are approximate only and are subject to change without notice. Window sizes and locations may vary. Furniture is for illustration purposes only and does not necessarily reflect the electrical plan for the suite. Suites are sold unfurnished. Actual useable floor space within the unit may be different from stated floor areas or dimensions on this plan. For more information on the method used for calculating the floor area of any unit, please refer to Builder Bulletin No. 22 published by Tarion. Balcony and terrace area is approximate and not included in net suite area. The actual unit purchased may be a reverse layout to the plan shown. E.&O.E.

Interior: 567 Sq Ft    Exterior: 0 Sq Ft  
**Total: 567 Sq Ft**

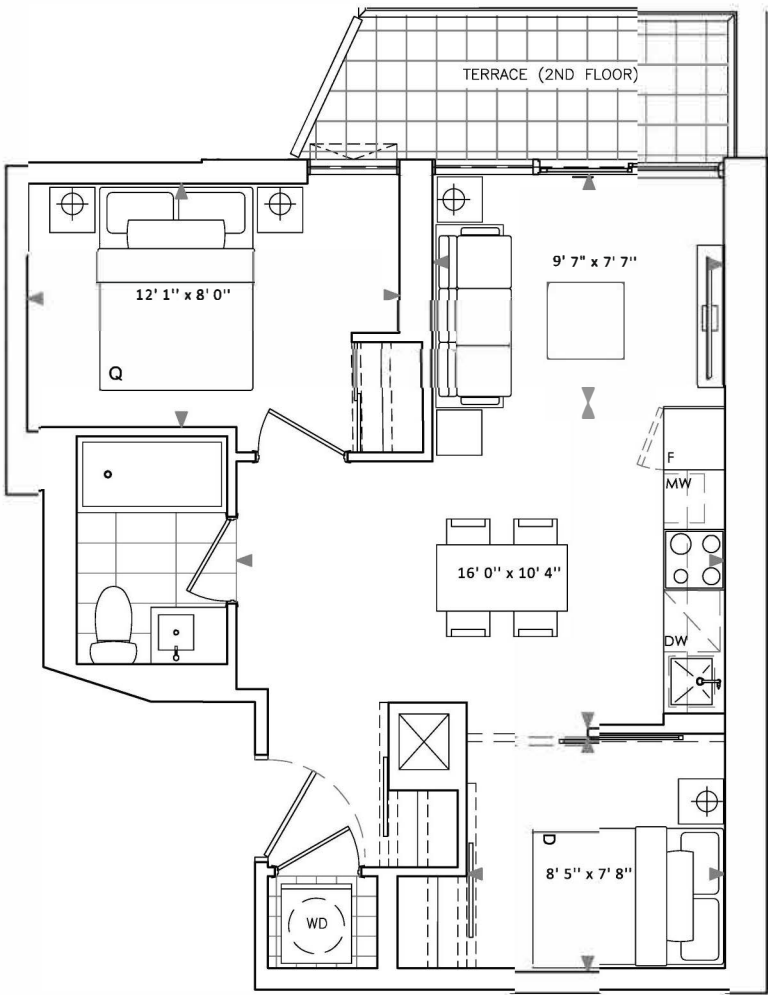
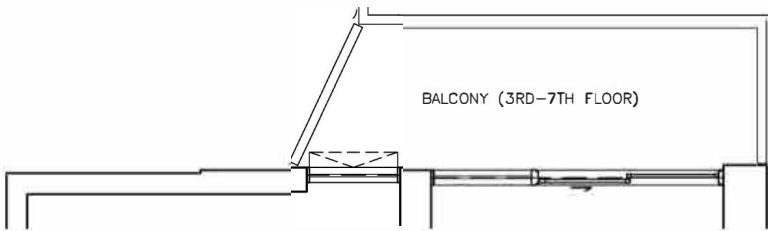


Interior: 577 Sq Ft    Exterior (terr.): 66 Sq Ft

**Total: 643 Sq Ft**

Exterior (balc.): 71 Sq Ft

**Total: 648 Sq Ft**



Fieldgate  
Urban

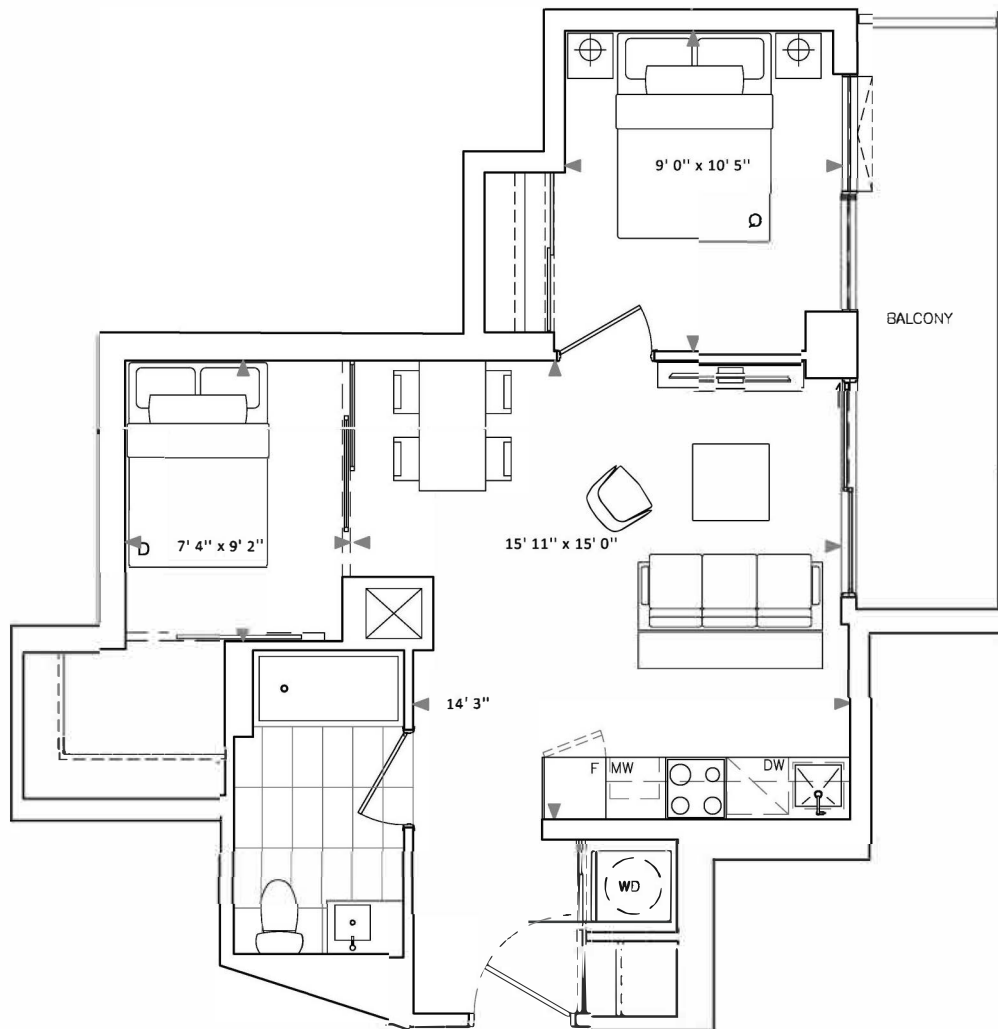
Dimensions, specifications, layouts and materials are approximate only and are subject to change without notice. Window sizes and locations may vary. Furniture is for illustration purposes only and does not necessarily reflect the electrical plan for the suite. Suites are sold unfurnished. Actual useable floor space within the unit may be different from stated floor areas or dimensions on this plan. For more information on the method used for calculating the floor area of any unit, please refer to Builder Bulletin No. 22 published by Tarion. Balcony and terrace area is approximate and not included in net suite area. The actual unit purchased may be a reverse layout to the plan shown. E.&O.E.

# THE TWELVE HUNDRED

# E2

Interior: 625 Sq Ft Exterior: 93 Sq Ft

**Total: 718 Sq Ft**



Fieldgate  
Urban

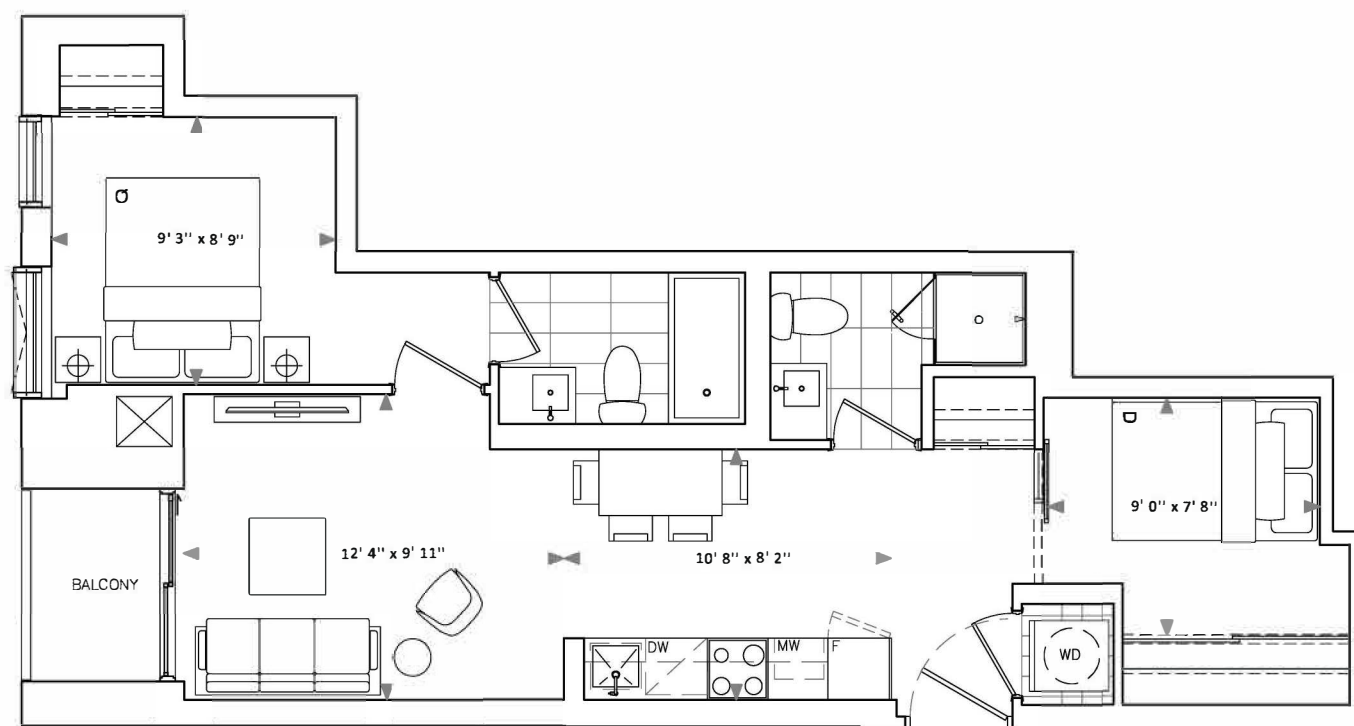
Dimensions, specifications, layouts and materials are approximate only and are subject to change without notice. Window sizes and locations may vary. Furniture is for illustration purposes only and does not necessarily reflect the electrical plan for the suite. Suites are sold unfurnished. Actual useable floor space within the unit may be different from stated floor areas or dimensions on this plan. For more information on the method used for calculating the floor area of any unit, please refer to Builder Bulletin No. 22 published by Tarian. Balcony and terrace area is approximate and not included in net suite area. The actual unit purchased may be a reverse layout to the plan shown. E.&O.E.

# THE TWELVE HUNDRED

# E6

Interior: 641 Sq Ft    Exterior: 28 Sq Ft

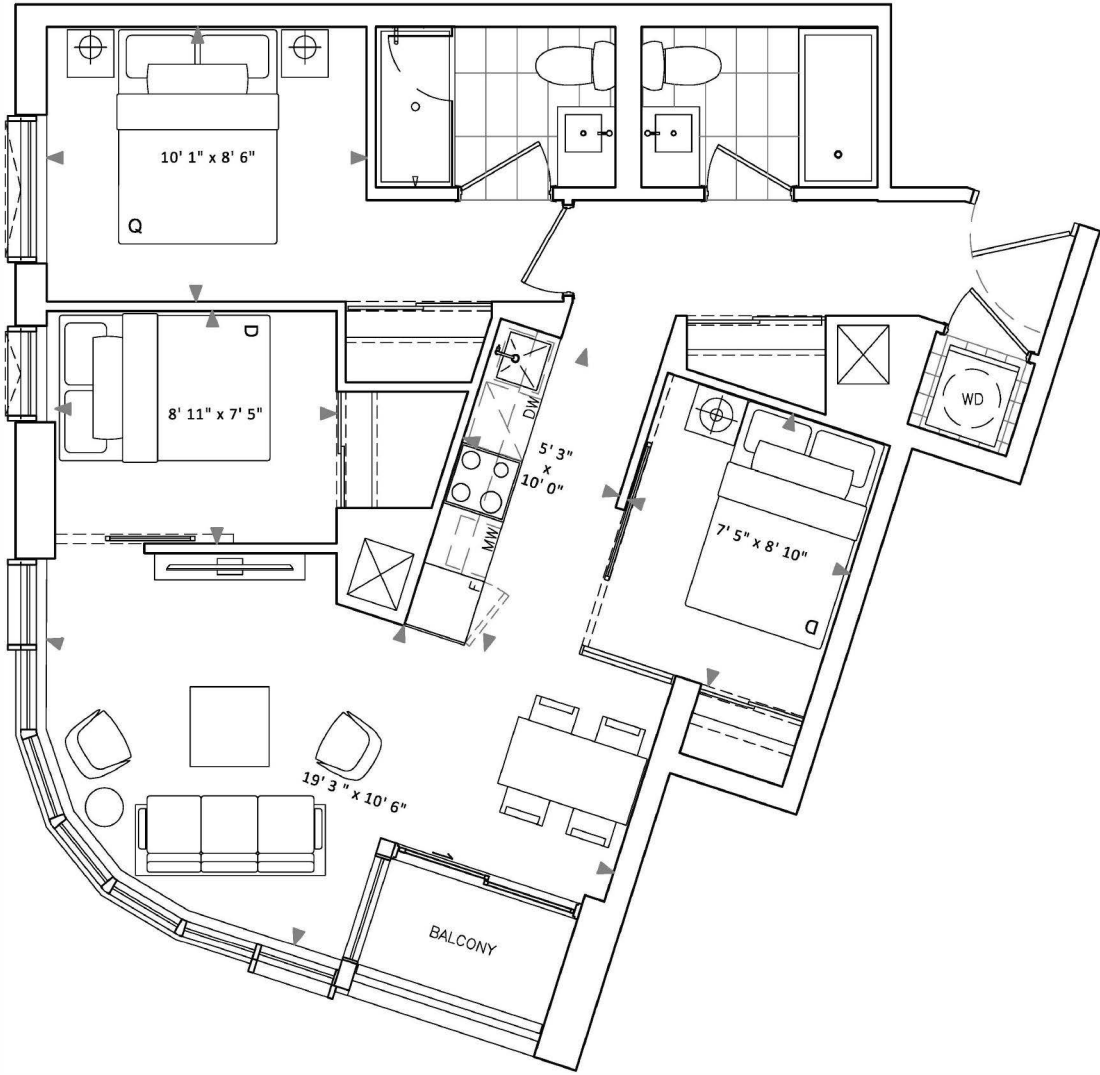
**Total: 669 Sq Ft**



Fieldgate  
Urban

Dimensions, specifications, layouts and materials are approximate only and are subject to change without notice. Window sizes and locations may vary. Furniture is for illustration purposes only and does not necessarily reflect the electrical plan for the suite. Suites are sold unfurnished. Actual useable floor space within the unit may be different from stated floor areas or dimensions on this plan. For more information on the method used for calculating the floor area of any unit, please refer to Builder Bulletin No. 22 published by Tarion. Balcony and terrace area is approximate and not included in net suite area. The actual unit purchased may be a reverse layout to the plan shown. E.&O.E.

Interior: 774 Sq Ft    Exterior: 24 Sq Ft  
Total: 798 Sq Ft



Interior: 819 Sq Ft Exterior: 636 Sq Ft

Total: 1455 Sq Ft

