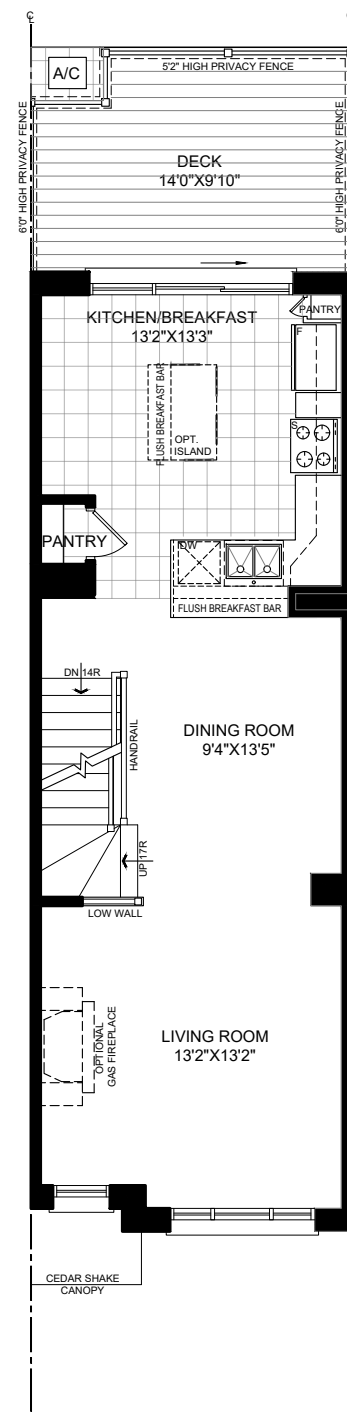
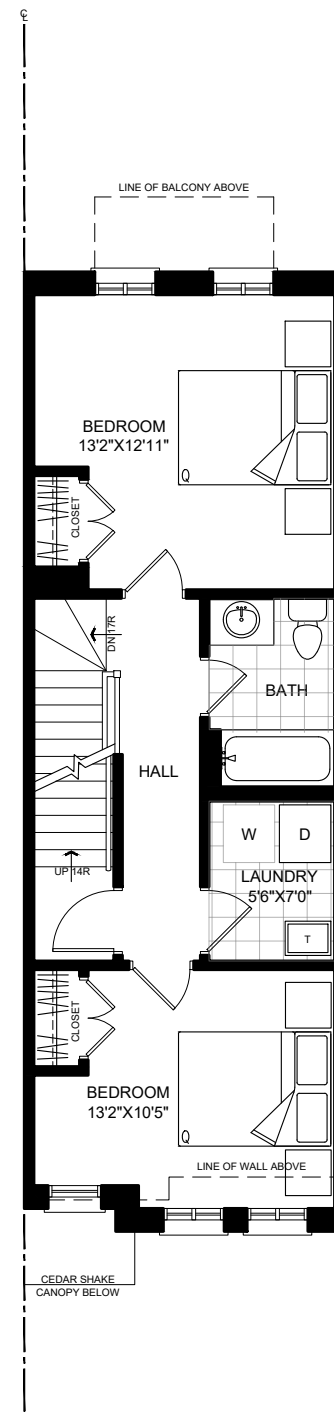


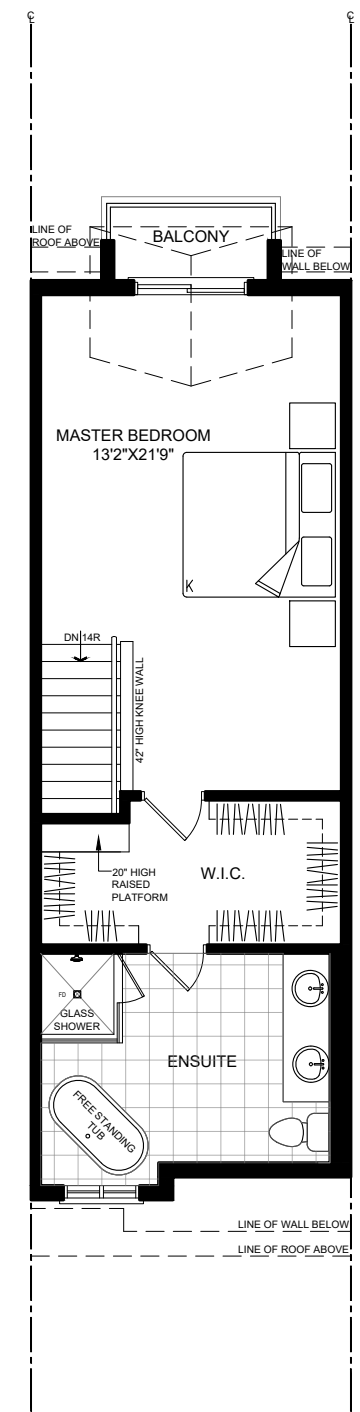
GROUND / BASEMENT  
'GLEESON'



FIRST FLOOR  
'GLEESON'



SECOND FLOOR  
'GLEESON'



THIRD FLOOR  
'GLEESON'

1, 949 SQ. FT.

GROUND / BASEMENT FLOOR PLAN - 225 SQ. FT.

FIRST FLOOR PLAN - 584 SQ. FT.

SECOND FLOOR PLAN - 584 SQ. FT.

THIRD FLOOR PLAN - 556 SQ. FT.

DECK (BLOCK B) - 123 SQ. FT.

# OAKVILLE RAVINE TOWNS

1020, 1024, 1028, 1032, 1042 SIXTH LINE ROAD, OAKVILLE

**GLEESON (TOWNHOUSE)**

**BLOCK A**

LOTS: 2, 3, 4, 5, 6, 7, 8, 9, 10, 11, 12.

14' WIDE BY 42' LONG

APRIL 07, 2021

OAKVILLE RAVINE  
**TOWNS**

by

**D**

**DUNPAR**  
BETTER BY DESIGN

THE WITHIN PLAN IS A GENERAL MARKETING CONCEPT. SIZES, SPECIFICATIONS AND DIMENSIONS ARE APPROXIMATE AND SUBJECT TO CHANGE WITHOUT NOTICE. THE USEABLE FLOOR SPACE MAY VARY FROM THE STATED FLOOR AREA. E. & O. E. \*\*\*NOTE: THE ACTUAL SQUARE FEET OF A GIVEN LOT MAY NOT REFLECT THE WITHIN PLAN, PLEASE ASK OUR SALES OFFICE FOR DETAILS ON SPECIFIC LOTS.