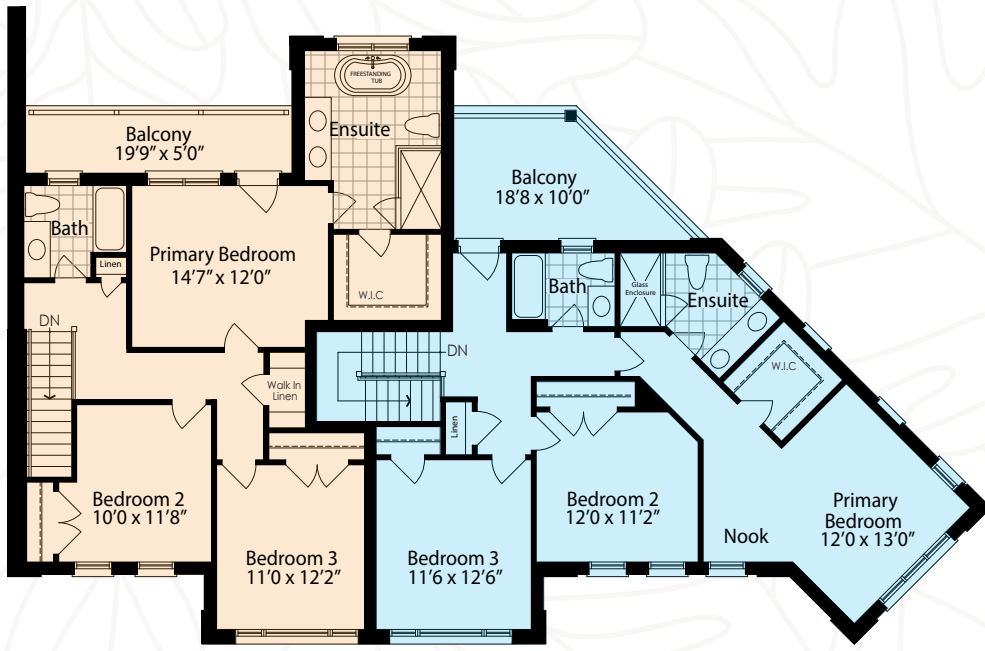


# THE MULTI-USE UNITS

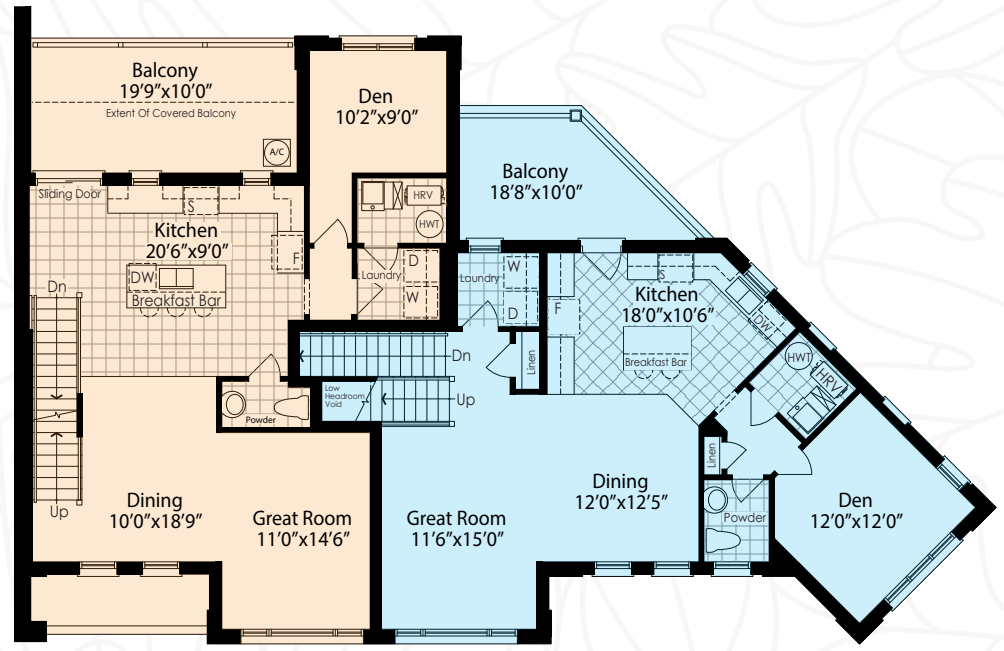
SUITES 2 & 3



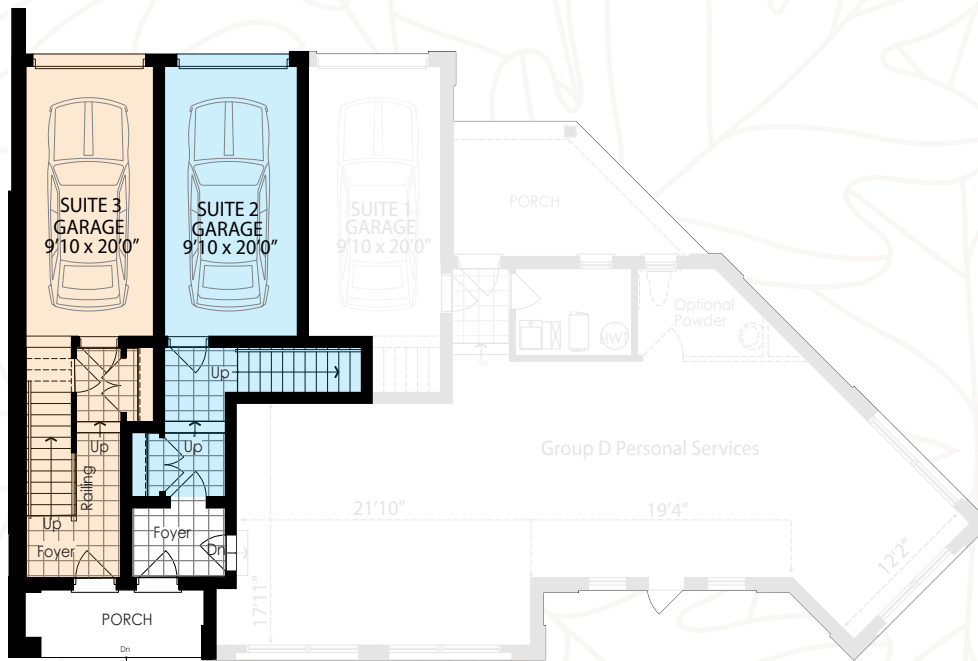
Royal Oaks  
IN OAKVILLE



THIRD FLOOR



MAIN FLOOR



GROUND FLOOR

LEGEND	
	SUITE 2 2185 sq.ft.
	SUITE 3 2115 sq.ft.

**BLOCK 105/108**  
Front Elevation

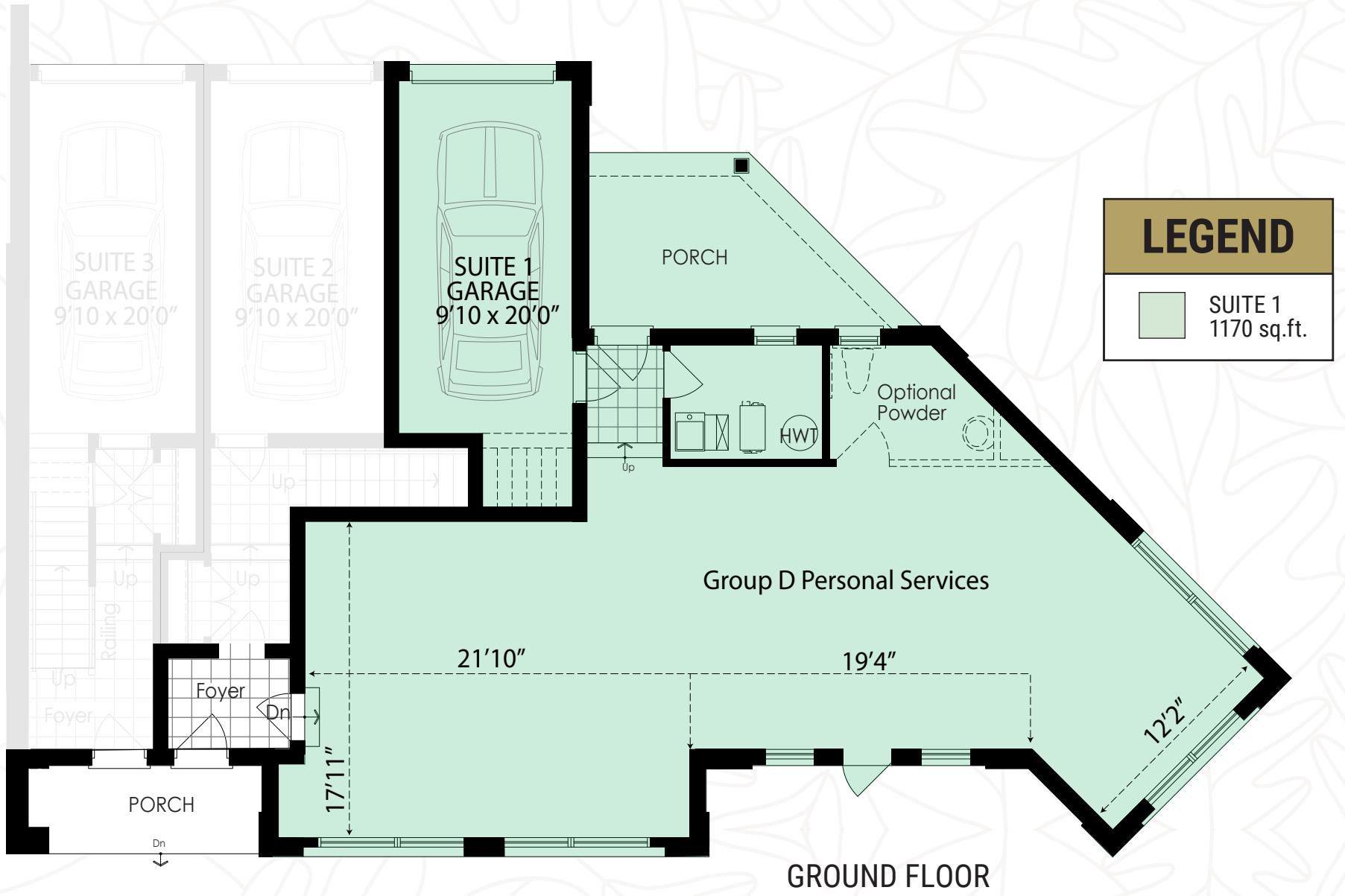


**BLOCK 106/107**  
Front Elevation



# THE MULTI-USE UNITS

SUITE 1 - GROUP D PERSONAL SERVICES SPACE (Ground Floor)



**BLOCK 105/108**  
Front Elevation



**BLOCK 106/107**  
Front Elevation



# THE MULTI-USE UNITS

FULL ELEVATIONS



Royal Oaks  
IN OAKVILLE

## BLOCK 105/108 Front Elevation



## BLOCK 106/107 Front Elevation

