



ASSIGNMENTS A L E

EAST STATION

The conveniently connected community of East Station offers a vibrant life in the one-of-a-kind city of Scarborough. Enjoy breezy access to beautiful parks, popular shopping destinations and established schools. Stay active and connected with the community and recreation centres just minutes away. With dedicated public transport and GO station stops nearby, you'll find getting around a snap. East Station offers affordable townhomes with elegant designs and natural surroundings, making it a wonderful place too, live, play and grow.

#### HIGHLIGHTS:

1 Beds + 1 Bath + 1 Underground Parking

SQ FT: 512 sq ft + 83 sq ft on Balcony

Occupancy: April 2022

New Eglinton LRT under construction

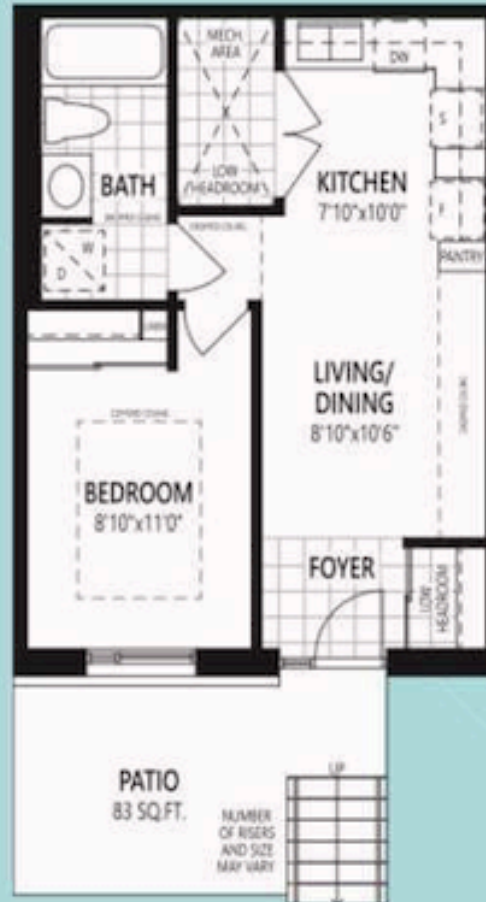
Asking: \$ 550,000

Stainless Steel Fridge, Stove, Dishwasher and Stacked Washer and Dryer included.



# THE ARGYLE

**URBAN TOWNHOME**  
512 SQ.FT. + 83 SQ.FT. PATIO



LOWER LEVEL



BUILDING C-E

ALL measurements are what's shown. Specifications, sizes and locations are subject to change without notice. All measurements and dimensions are approximate and are not guaranteed to be exact or to scale. These floor plans represent dimensions only to the "boxed" areas of the model type. Other actual usable floor space may vary from the stated floor area. Some floor plans and specifications may vary according to construction. Floor plans are used as the primary source. "Down and" labels denote rooms or areas in plan and should not be used unless noted. The site plan is intended to be a guide only and should not be used for construction purposes. The actual of the building will vary depending upon various factors including, without limitation, the presence and extent of mechanical systems, ducts or the like. Use with a floor plan to verify exact location and to report to your local building department for approval. Please consult your sales representative. © 2023, October 2023. Copyright 2023 - Hedberg Home Limited.