




King Hill
H O M E S

ANOTHER PROJECT BY ZONIX GROUP

MODERN TOWNHOMES

TOWNHOMES

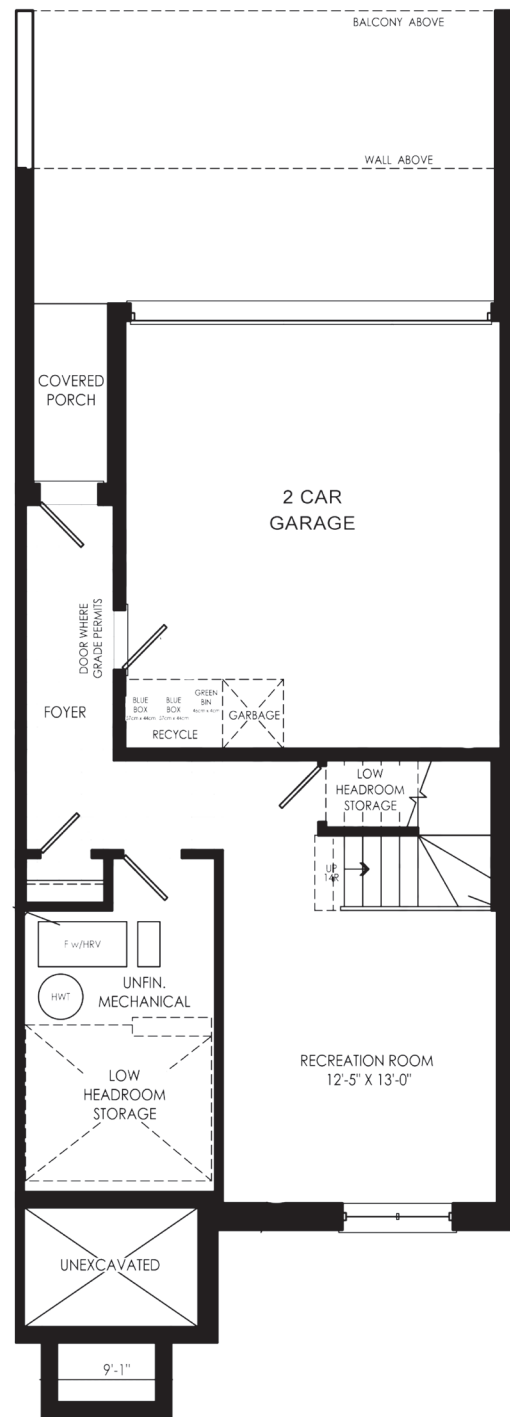
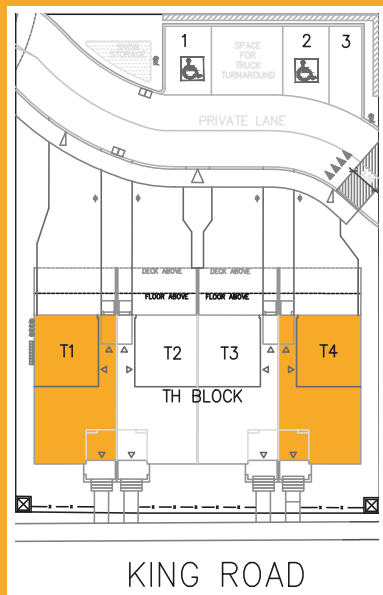
END UNIT

2,512 SQ.FT

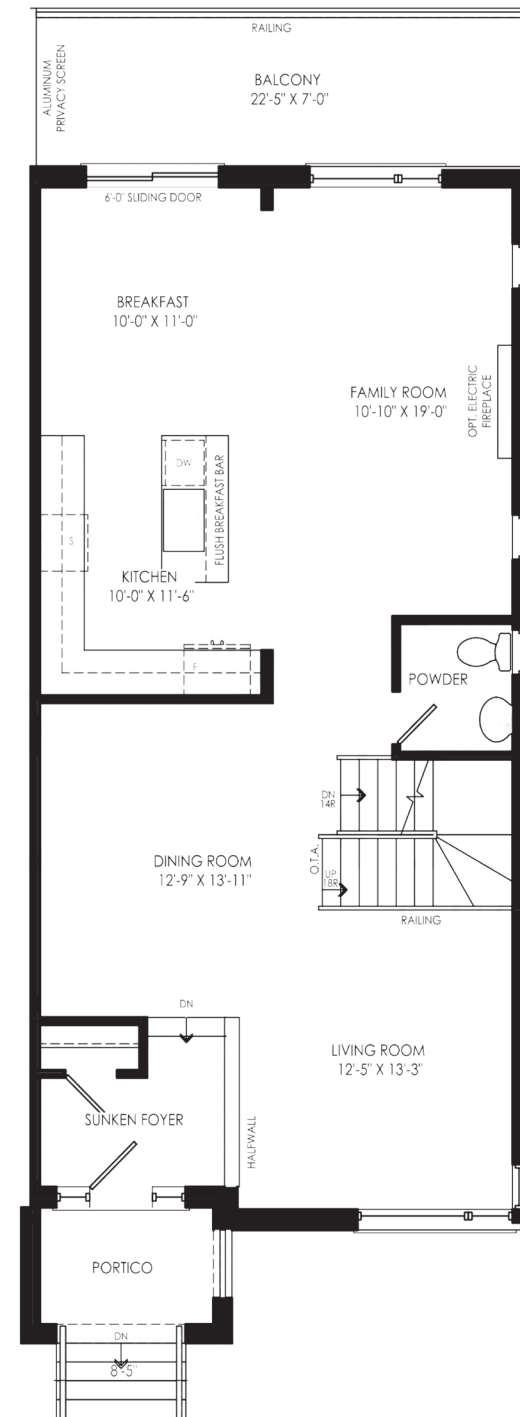
3.5 BEDROOMS

2 GARAGE

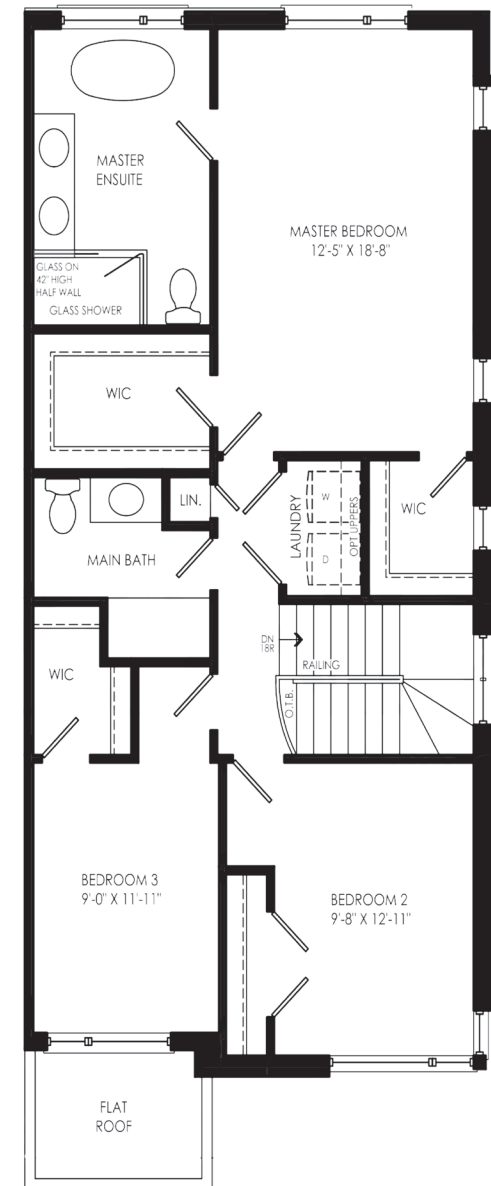
3 STORY



TOWNHOME (END UNIT)
GROUND FLOOR



TOWNHOME (END UNIT)
FIRST FLOOR



TOWNHOME (END UNIT)
SECOND FLOOR



Disclaimer: materials, specifications & floor plans are subject to change without notice. All renderings are artist's concept. All floor plans have approximate dimensions.

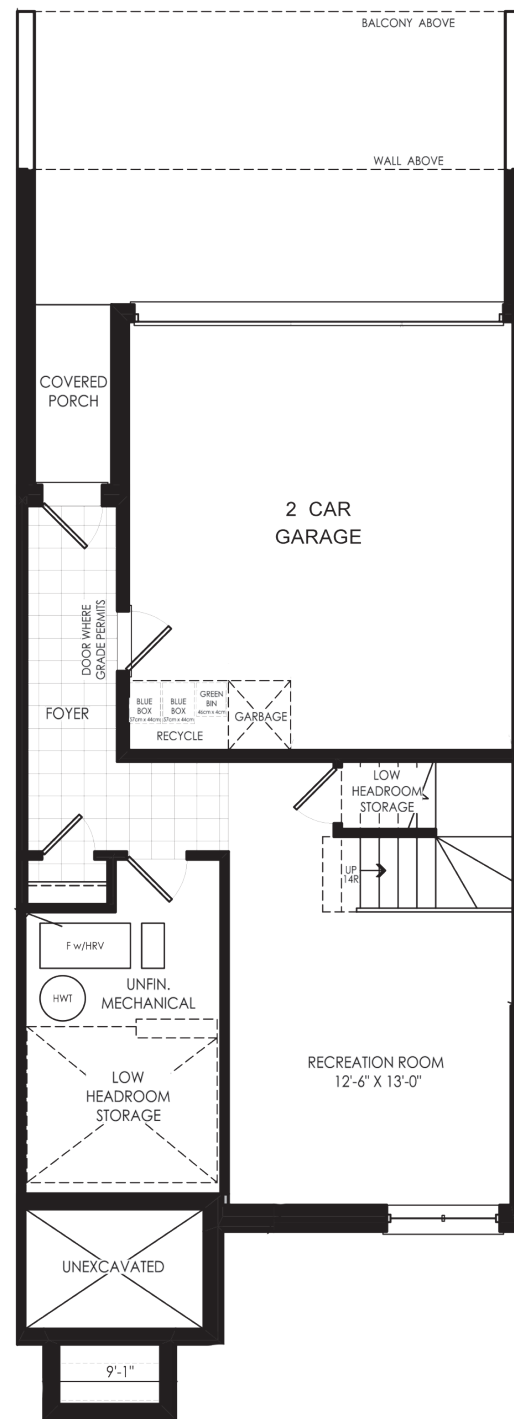
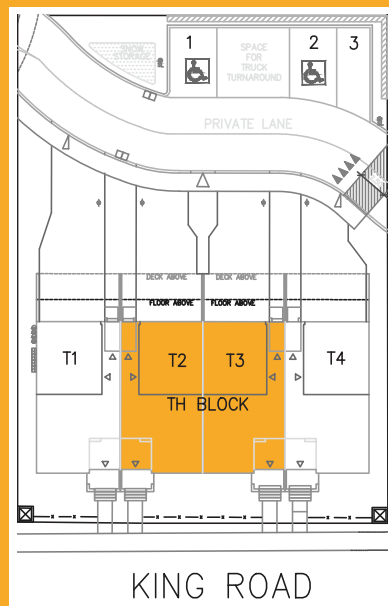
TOWNHOMES MIDDLE UNIT

2,478 SQ.FT

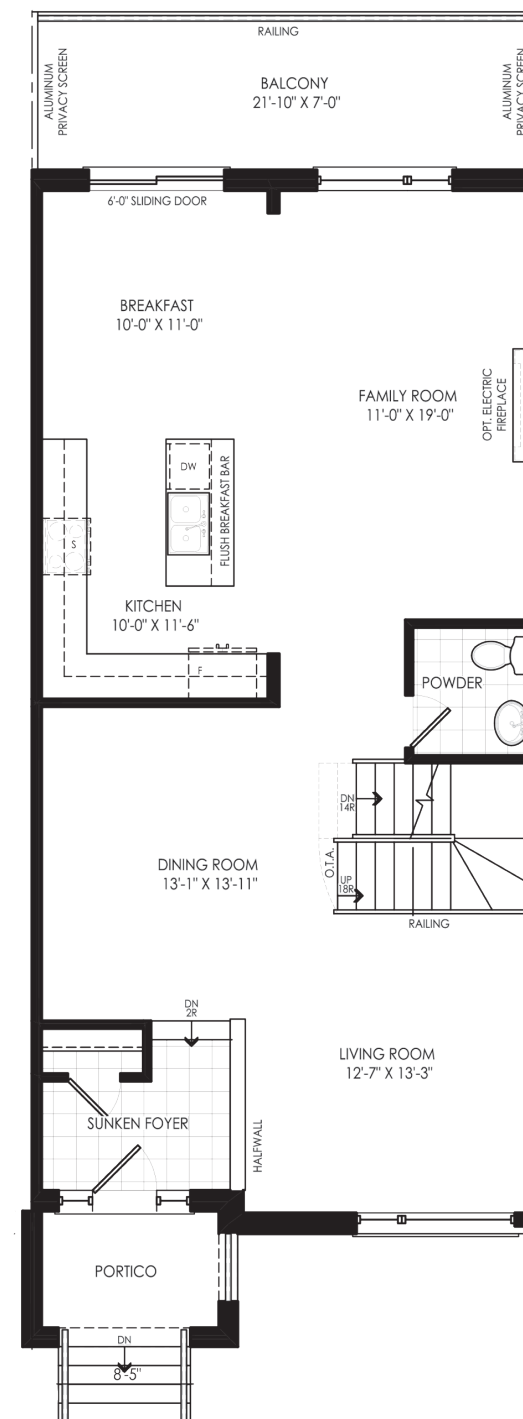
3.5 BEDROOMS

2 GARAGE

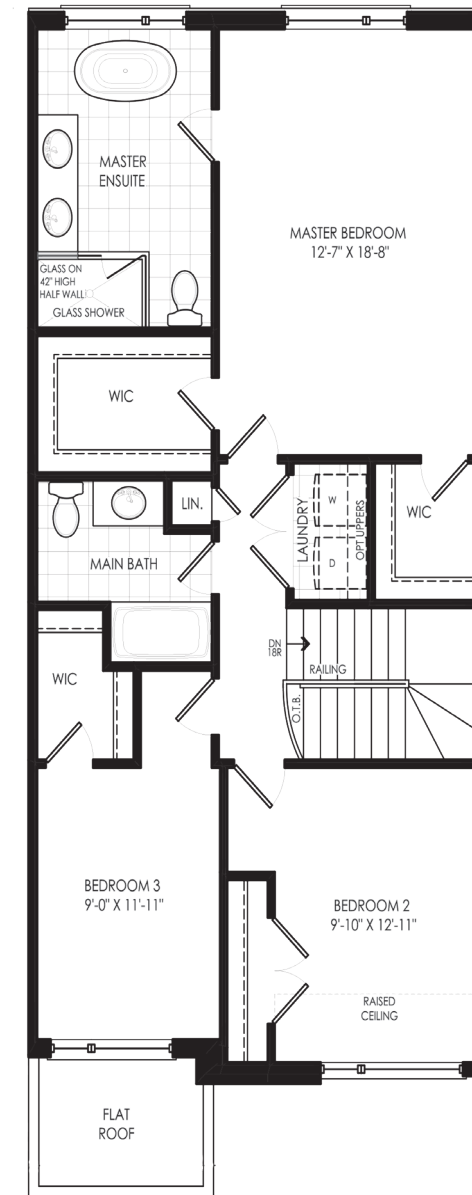
3 STORY



TOWNHOME (MIDDLE)
GROUND FLOOR



TOWNHOME (MIDDLE)
FIRST FLOOR



TOWNHOME (MIDDLE)
SECOND FLOOR



Disclaimer: materials, specifications & floor plans are subject to change without notice. All renderings are artist's concept. All floor plans have approximate dimensions.