

THE SCHOONER

TOWNHOUSE

3 BEDROOMS

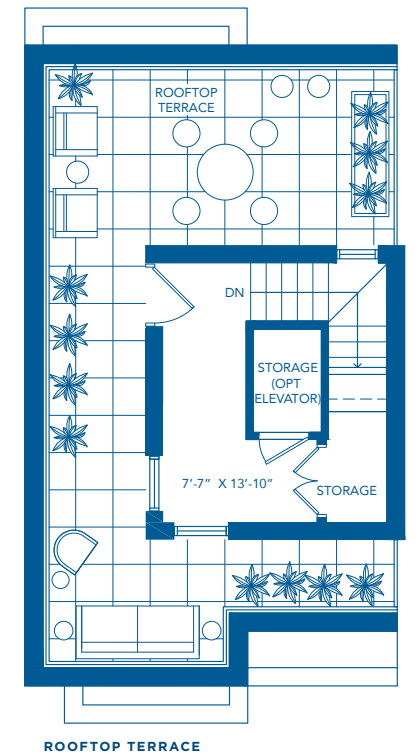
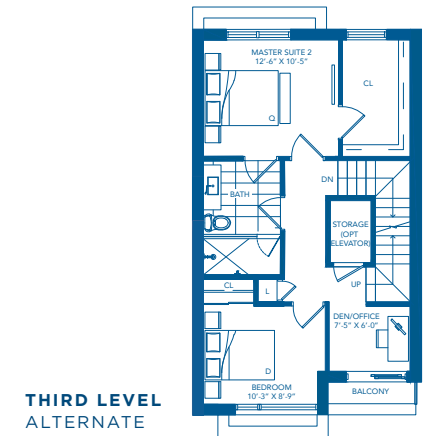
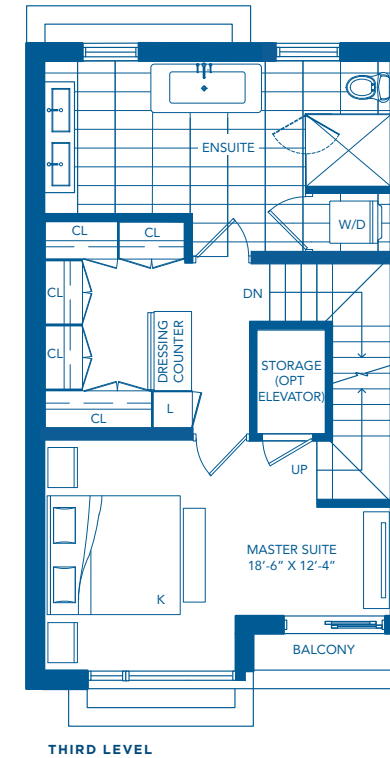
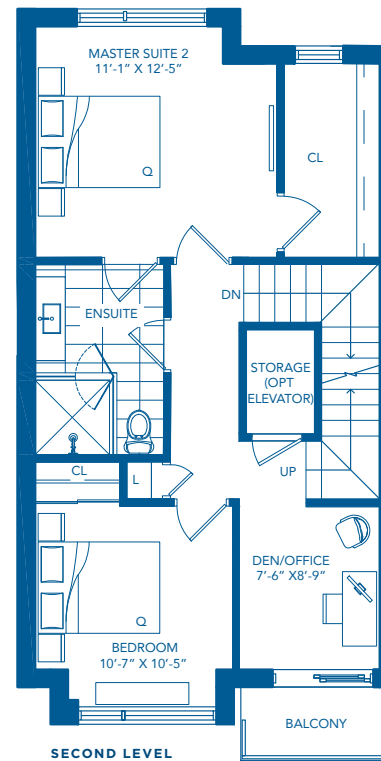
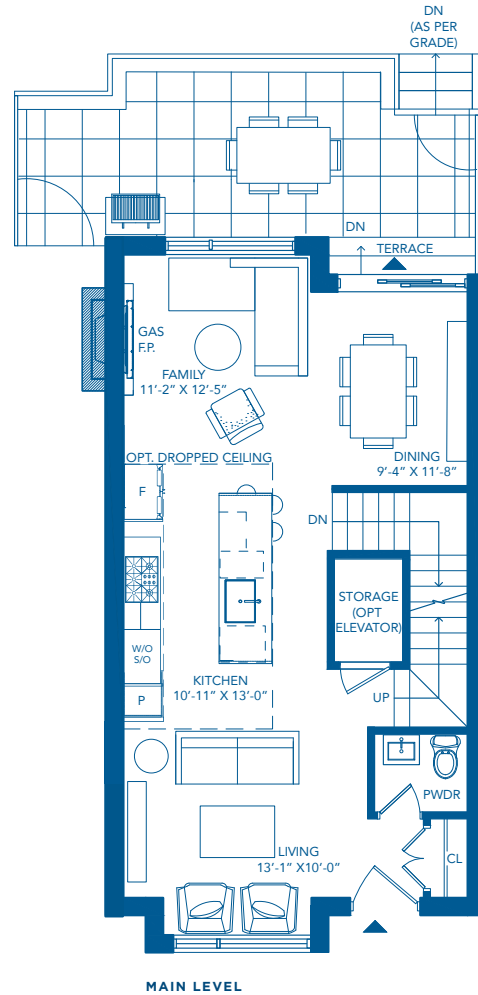
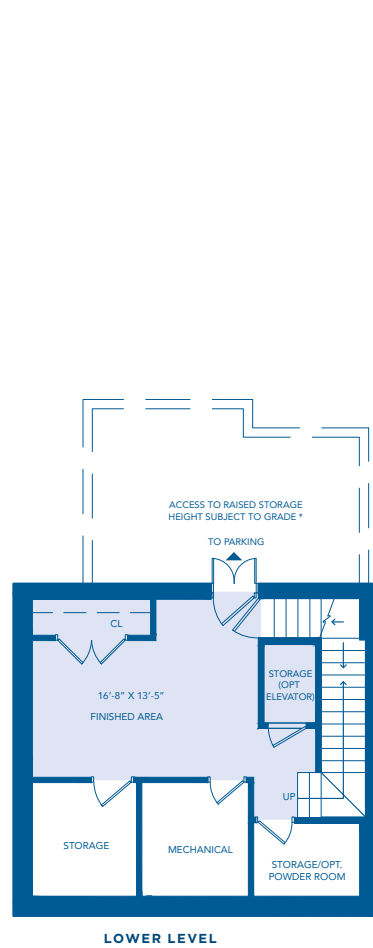
2.5 BATHS

2,630 SQ. FT.

Incl. 287 sf of finished lower level

+ 407 sf of Rooftop Terrace

+ 2 additional balconies



*Sizes and specifications are subject to change without notice. E.&O.E. Actual usable space may vary from any stated floor area. All dimensions are approximate and are subject to normal construction variances. Square footage noted includes lower level and rooftop vestibule. Measurements of rooms set forth on any floor plan may be taken at the widest points of each given room (as if the room were a perfect triangle). Floor measurements were calculated on the middle floor of typical floor plates. Balcony and column locations may vary as per elevation feature. Balconies may be different on varying levels. Furniture and accessories are not included and are shown only as display. Ask sales representative about elevated storage space details in lower level. December, 2020.

THE
SHORES
OF PORT CREDIT