

THE PEMBROKE

ELEVATION A & B • 1709 sq.ft.

SCHEDULE A2



WYLDWOOD TRAIL
UXBRIDGE



Elevation A



Elevation B

THE HOLLAND

SCHEDULE A2

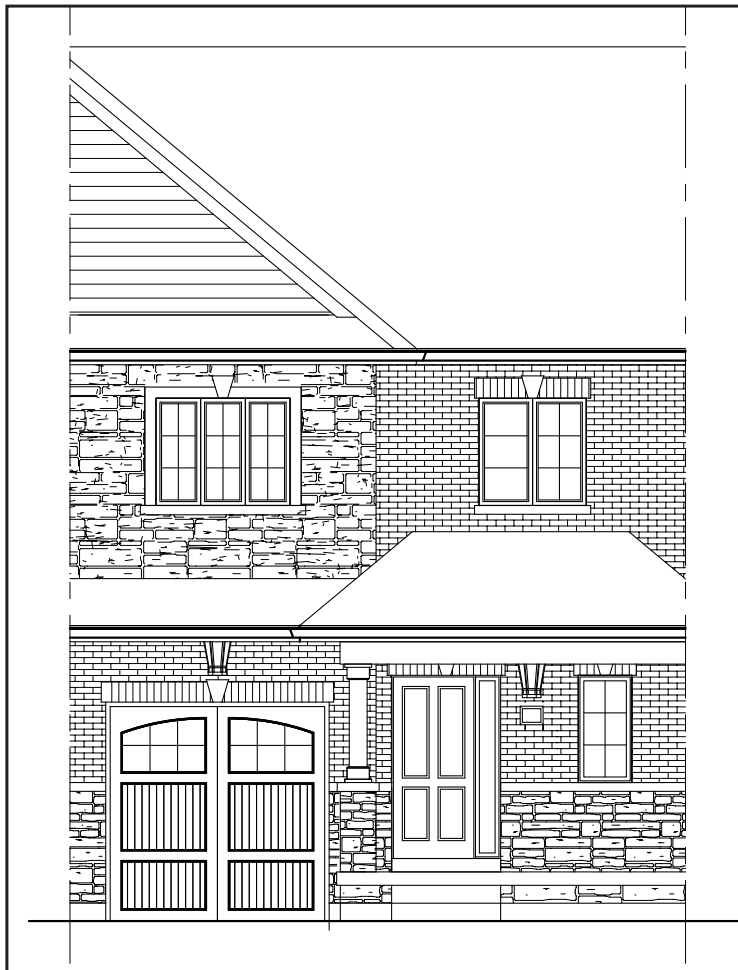
ELEVATION A & B • 1742 sq.ft.



WYLDWOOD TRAIL
UXBRIDGE



Elevation A



Elevation B

The floor plans and elevations shown are pre-construction plans and may be revised or improved as necessitated by architectural controls and the construction process. The measurements adhere to the rules and regulations of the TARIION Warranty Corporation's official method for the calculation of floor area. Actual usable floor space may vary from the stated floor area. Locations of furnace, hot water tank, posts and beams may vary and are to be determined by architect and purchasers shall be deemed to accept the same.
E. & O.E. February 2022 THE HOLLAND

OXFORD
DEVELOPMENTS

THE
SIMCOE I (end unit)

ELEVATION A & B • 1791 sq.ft.

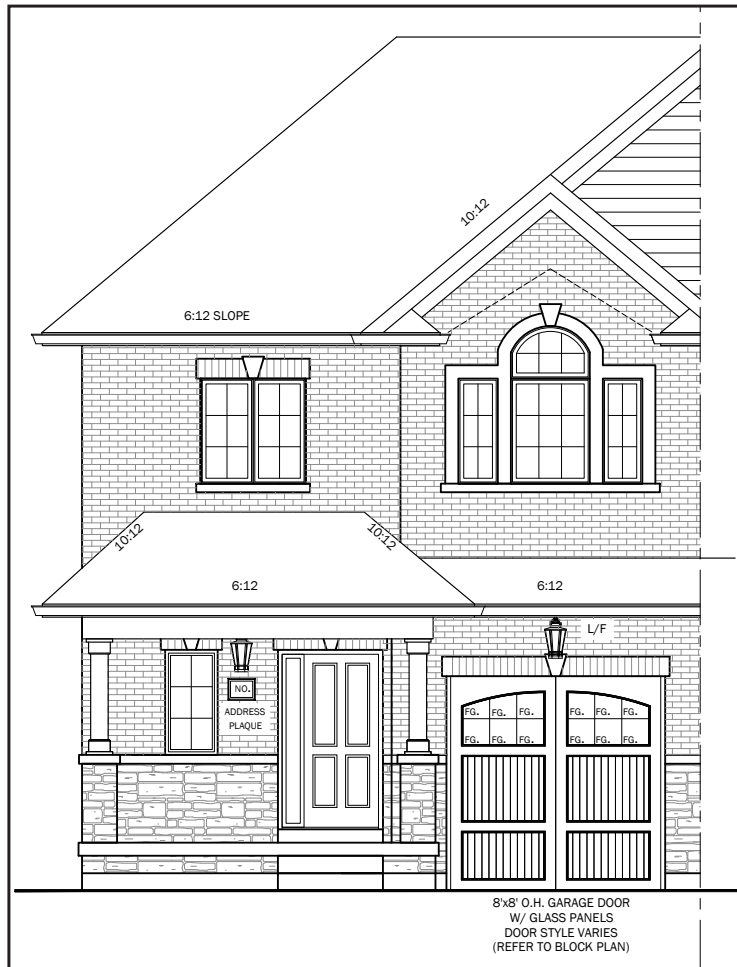
SCHEDULE A2



WYLDWOOD TRAIL
UXBRIDGE



Elevation A



Elevation B

The floor plans and elevations shown are pre-construction plans and may be revised or improved as necessitated by architectural controls and the construction process. The measurements adhere to the rules and regulations of the TARIION Warranty Corporation's official method for the calculation of floor area. Actual usable floor space may vary from the stated floor area. Locations of furnace, hot water tank, posts and beams may vary and are to be determined by architect and purchasers shall be deemed to accept the same.
E. & O.E. February 2022 THE SIMCOE I

THE
SIMCOE II (corner unit)

ELEVATION A & B • 1791 sq.ft.

SCHEDULE A2



WYLDWOOD TRAIL
 UXBRIDGE



Elevation A



Elevation B

The floor plans and elevations shown are pre-construction plans and may be revised or improved as necessitated by architectural controls and the construction process. The measurements adhere to the rules and regulations of the TARIION Warranty Corporation's official method for the calculation of floor area. Actual usable floor space may vary from the stated floor area. Locations of furnace, hot water tank, posts and beams may vary and are to be determined by architect and purchasers shall be deemed to accept the same.
 E. & O.E. February 2022 THE SIMCOE II