



COUNTRY LANE FREEHOLD TOWNS COLLECTION

Subject to Availability

Model	Elevation	Sq.Ft.	Priced From*
THE DOVER (TH-1)	A	1,745	\$1,244,990
	B	1,745	\$1,250,990
THE DAKOTA (TH-2) <i>OPTIONAL 4 BEDROOM & MAIN BATH 2</i>	A	1,926	\$1,284,990
	B	1,918	\$1,290,990
	A/B		+\$15,000
THE DESTINY (TH-3) <i>OPTIONAL 4 BEDROOM & MAIN BATH 2</i>	A	2,042	\$1,304,990
	B	2,042	\$1,304,990
	A/B		+\$15,000
THE DORSET END (TH-4E) <i>OPTIONAL 4 BEDROOM & MAIN BATH 2</i>	A	2,392	\$1,349,990
	B	2,392	\$1,349,990
	A/B		+\$15,000
THE DEVON CORNER (TH-4C) <i>OPTIONAL 4 BEDROOM & MAIN BATH 2</i>	B	2,334	\$1,378,990
	B		+\$15,000

GRADING CONDITION PREMIUMS - Deck \$5,000; Lookout \$12,000 & Walk-Out Basement \$27,500

- Additional Lot Premiums May Apply. See Sales Representative for Details •

DEPOSIT STRUCTURE

\$20,000 to accompany the offer by Bank Draft

\$30,000 in 30 days; \$30,000 in 60 days; \$30,000 in 90 days; \$40,000 in 150 days

BONUS PACKAGE

Fully Installed Central Air Conditioning

Smooth Ceilings on the Ground and Main Floors

Oak Stairs Stained in Choice from 3 Standard Colours

Oak Strip Hardwood Flooring Stained in Choice from 3 Standard Colours

Oak Strip Hardwood Flooring in the Upper Hall Stained in Choice from 3 Standard Colours

Oak Strip Hardwood Flooring in the Ground Floor Recreation Room Stained in Choice from 3 Standard Colours

CLOSINGS

Commencing Spring 2023

(



All prices, figures, features, specifications and materials are preliminary, as per plan and are subject to change without notice. Actual usable floor area may vary from the stated floor area in accordance with the Floor Area Calculation Directive dated February 1, 2021 published by the Housing Construction Regulatory Authority. E.&O.E._20220426V4_IFS

Discover the Andrin Advantage

Quality details that are second to none.

At The Trails of Country Lane our modern features and premium quality finishes go well beyond your expectations to create beautiful living environments that embrace your every need.

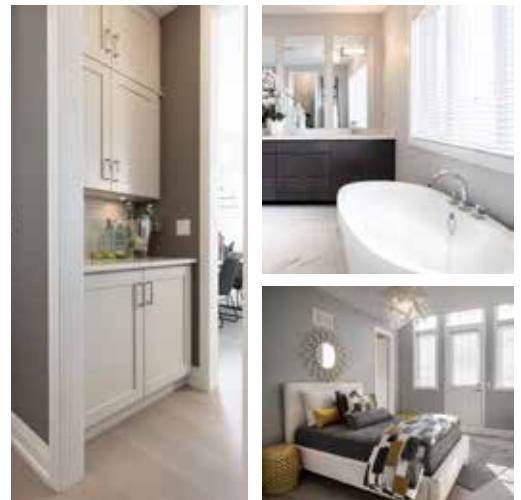
ANDRIN'S INCLUDED FEATURES & FINISHES* - TOWNHOMES

- 8' High Front Entry Door
- 9' Ground & Main Floor Ceiling and 8' Second Floor Ceiling
- Integrated Stone House Address Numbers
- Pre-finished and Insulated Sectional Garage Door
- Oversized Basement Windows
- Oak Handrail with Contemporary Black Metal Pickets
- 2 1/4" x 3/4" Solid Oak Strip Flooring on Main Floor (in non-tiled areas)
- Linear Electric Fireplace
- 8" Trimmed Archways on the Main Floor
- Extended Height Upper Kitchen Cabinetry
- Extended Depth Cabinetry Over Fridge with One Side Gable
- Natural or Manufactured Stone Countertop in Kitchen
- Undercabinet Slimline Stainless Steel Hood Fan
- Separate Showers with Tiled Ceiling, Pot Light and Glass Shower Door
- Comfort Height Vanities in all Second Floor Bathrooms
- Shut Off Valves on High Volume Fixtures
- Integrated USB Plug in Kitchen
- Rough-in Electrical Outlet & Conduit for Installation of a Future EV Car Charger in Garage
- Solar Conduit Rough-in from Basement to the Attic Space.
- Roof Trusses Designed to Support the Weight of Future Solar Panels
- Better Than Code Insulation in Walls and Attic

TRAILS OF COUNTRY LANE ADDITIONAL BONUS FEATURES

- Fully Installed Central Air Conditioning
- Smooth Ceilings on the Ground & Main Floors
- Oak Stairs Stained in Choice from 3 Standard Colours
- Oak Strip Hardwood Flooring on Main Floor (excludes tiled areas) Stained in Choice from 3 Standard Colours
- Oak Strip Hardwood Flooring in the Upper Hall Stained in Choice from 3 Standard Colours
- Oak Strip Hardwood Flooring in the Ground Floor Recreation Room Stained in Choice from 3 Standard Colours

* Features are as per plan and Schedule B to the APS. May not be included in all models. Subject to change without notice. E. & O. E.



The Andrin logo consists of a stylized 'A' symbol followed by the word 'ANDRIN' in a bold, sans-serif font.



COUNTRY LANE 26' DETACHED COLLECTION

Subject to Availability

Model	Elevation	Sq.Ft.	Priced From*
THE ADELE (26-1)	A	2,023	\$1,549,990
	B	2,023	\$1,561,990
	C	2,027	\$1,575,990
THE ADELE (26-1S)	A	1,988	\$1,546,990
	B	1,988	\$1,558,990
	C	1,992	\$1,572,990
THE ASHBERRY (26-2)	A	2,240	\$1,569,990
	B	2,237	\$1,587,990
	C	2,230	\$1,618,990
THE ASHBERRY (26-2S)	A	2,193	\$1,565,990
	B	2,225	\$1,583,990
	C	2,218	\$1,614,990
(26 - 3C S) - CORNER - LOT 80E	B	2,240	\$1,627,990

GRADING CONDITION PREMIUMS - Deck \$5,000; Lookout \$12,000 & Walk-Out Basement \$27,500

• Additional Lot Premiums May Apply. See Sales Representative for Details •

DEPOSIT STRUCTURE

\$20,000 to accompany the offer by Bank Draft

\$30,000 in 30 days; \$30,000 in 60 days; \$30,000 in 90 days; \$40,000 in 150 days

BONUS PACKAGE

Fully Installed Central Air Conditioning

Smooth Ceilings on the Main Floor

Oak Stairs Stained in Choice from 3 Standard Colours

Oak Strip Hardwood Flooring Stained in Choice from 3 Standard Colours

Oak Strip Hardwood Flooring in the Upper Hall Stained in Choice from 3 Standard Colours

Oak Strip Hardwood Flooring in the Primary Bedroom Stained in Choice from 3 Standard Colours

CLOSINGS

Commencing Spring 2023



All prices, figures, features, specifications and materials are preliminary, as per plan and are subject to change without notice. Actual usable floor area may vary from the stated floor area in accordance with the Floor Area Calculation Directive dated February 1, 2021 published by the Housing Construction Regulatory Authority. E.&O.E._20220425V4_IFS

Discover the Andrin Advantage

Quality details that are second to none.

At The Trails of Country Lane our modern features and premium quality finishes go well beyond your expectations to create beautiful living environments that embrace your every need.

ANDRIN'S INCLUDED FEATURES & FINISHES* - 26' DETACHED

- 8' High Front Entry Door
- 9' Main Floor Ceiling and 8' Second Floor Ceiling
- Integrated Stone House Address Numbers
- Pre-finished and Insulated Sectional Garage Door
- Oversized Basement Windows
- Oak Handrail with Contemporary Black Metal Pickets
- 2 1/4" x 3/4" Solid Oak Strip Flooring on Main Floor (in non-tiled areas)
- Linear Electric Fireplace
- 8" Trimmed Archways on the Main Floor
- Extended Height Upper Kitchen Cabinetry
- Extended Depth Cabinetry Over Fridge with One Side Gable
- Natural or Manufactured Stone Countertop in Kitchen
- Undercabinet Slimline Stainless Steel Hood Fan
- Separate Showers with Tiled Ceiling, Pot Light and Glass Shower Door
- Comfort Height Vanities in all Second Floor Bathrooms
- Shut Off Valves on High Volume Fixtures
- Integrated USB Plug in Kitchen
- Rough-in Electrical Outlet & Conduit for Installation of a Future EV Car Charger in Garage
- Solar Conduit Rough-in from Basement to the Attic Space.
- Roof Trusses Designed to Support the Weight of Future Solar Panels
- Better Than Code Insulation in Walls and Attic

TRAILS OF COUNTRY LANE ADDITIONAL BONUS FEATURES

- Fully Installed Central Air Conditioning
- Smooth Ceilings on the Main Floor
- Oak Stairs Stained in Choice from 3 Standard Colours
- Oak Strip Harwood Flooring on Main Floor (excludes tiled areas) Stained in Choice from 3 Standard Colours
- Oak Strip Hardwood Flooring in the Upper Hall Stained in Choice from 3 Standard Colours
- Oak Strip Hardwood Flooring in the Master Bedroom Stained in Choice from 3 Standard Colours

* Features are as per plan and Schedule B to the APS. May not be included in all models. Subject to change without notice. E. & O. E.





LOT UPGRADES

TOWNHOME & 26' COLLECTIONS

LOT	Price	Description
Block 98 Lot 3	\$10,000	Deeper Lot
Block 98 Lot 4	\$12,000	Deeper Lot
Block 98 Lot 5	\$14,000	Deeper Lot
Block 98 Lot 6	\$16,000	Deeper Lot
Block 99 Lot 5	\$8,000	Deeper Lot
Block 99 Lot 6	\$8,000	Deeper Lot
LOT 61E	\$3,000	Pie Shaped
LOT 70E	\$20,000	Deeper Lot
LOT 71E	\$20,000	Deeper Lot
LOT 72E	\$16,000	Deeper Lot
LOT 73E	\$13,000	Deeper Lot
LOT 74E	\$13,000	Deeper Lot
LOT 75E	\$12,000	Deeper Lot
LOT 81E	\$30,000	Backing onto Pond, Deck Condition
LOT 82E	\$55,000	Backing onto Pond, Deck Condition
LOT 83E	\$55,000	Backing onto Pond, Deck Condition
LOT 84E	\$82,000	Backing onto Pond, Pie Shaped, Lookout Condition
LOT 85E	\$92,000	Backing onto Pond, Pie Shaped, Lookout Condition
LOT 86E	\$112,000	Backing onto Pond, Pie Shaped, Lookout Condition

