



SPLENDOUR

A SPLENDID LIFE

FLOOR PLANS | MULTI-GEN HOMES



BUILT BY PINEWOOD HOMES



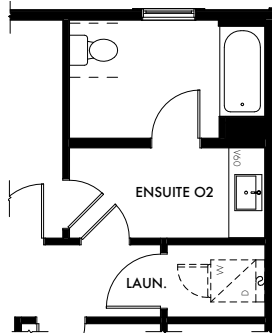
SPLENDOUR

GRANDEUR

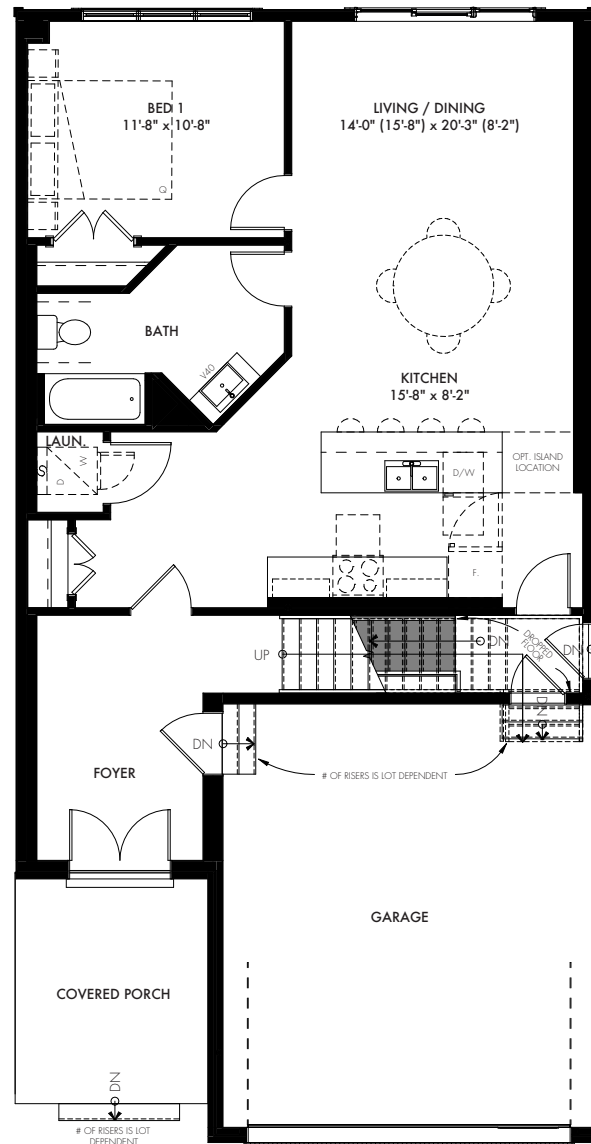
36-ML, ELEV A | 2437 SQ FT



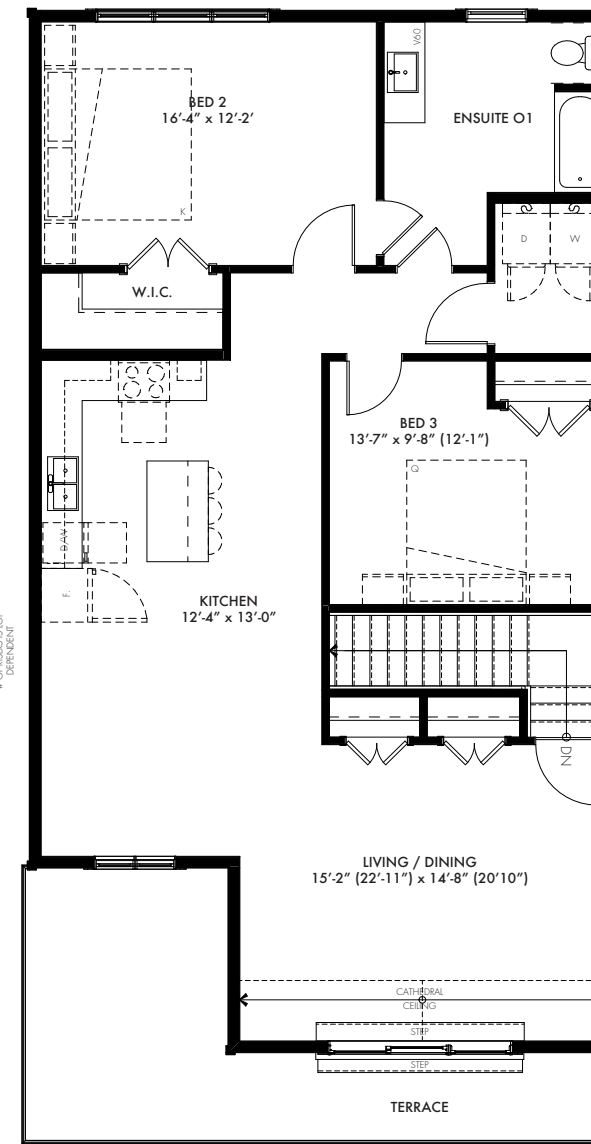
ELEVATION A



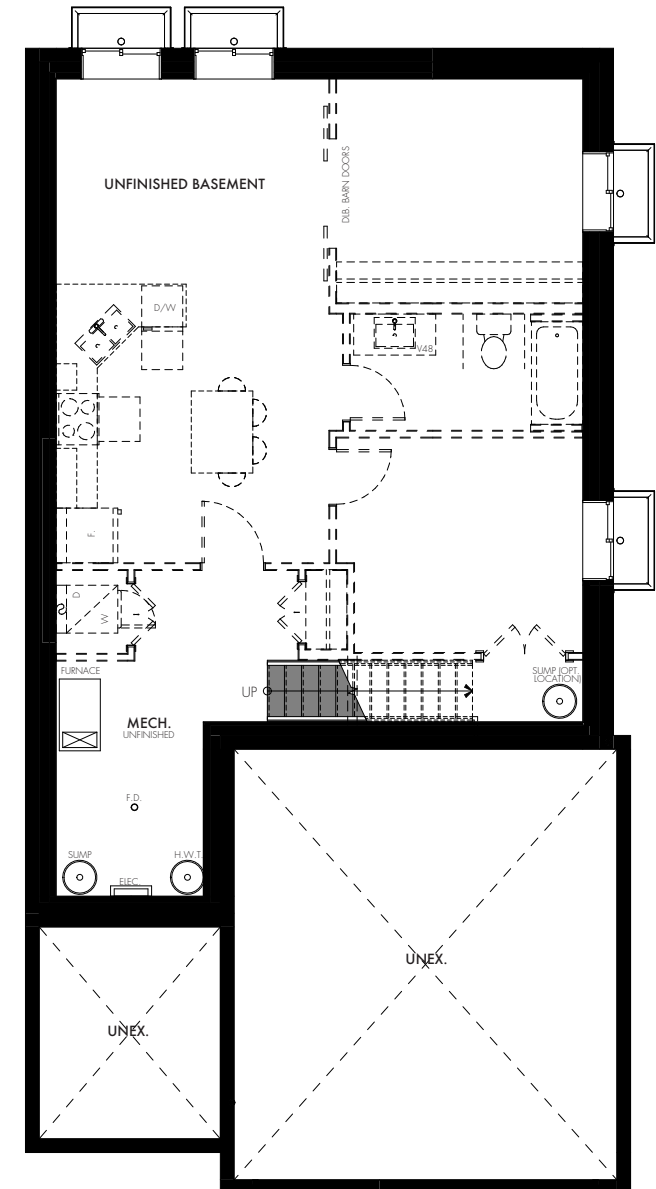
BATHROOM OPT. 2



**MAIN FLOOR
1074 SQ FT**



**SECOND FLOOR
1363 SQ FT**



**BASEMENT
820 SQ FT**

**Note: window locations, sizes, & sill heights vary per floor. The number of risers is lot dependent. Subject to certain terms and conditions as defined in the agreement of purchase and sale, features, finishes, sizes, and specifications are subject to change without notice. Furniture is displayed for illustration purposes only and does not necessarily reflect the electrical plan for the lot. Lots are sold unfurnished. All measurements are taken base x height in reference to floor plan orientation. All measurements are approximate value. Do not use for construction/square footage calculations etc. Floor plans current as of April 2022. Actual usable floor space varies from stated floor area. Please see the builder and sales representative for details. E&OE.



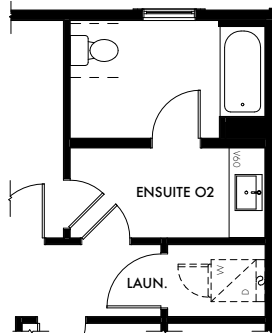
SPLENDOUR

GRANDEUR

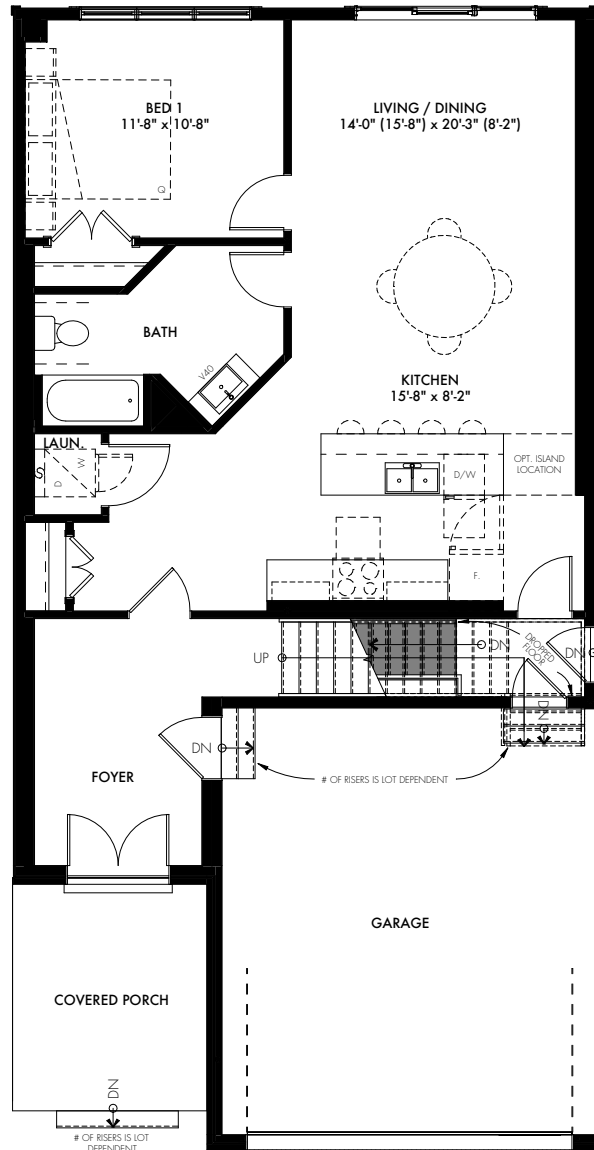
36-ML, ELEV A | 2437 SQ FT + WALK UP



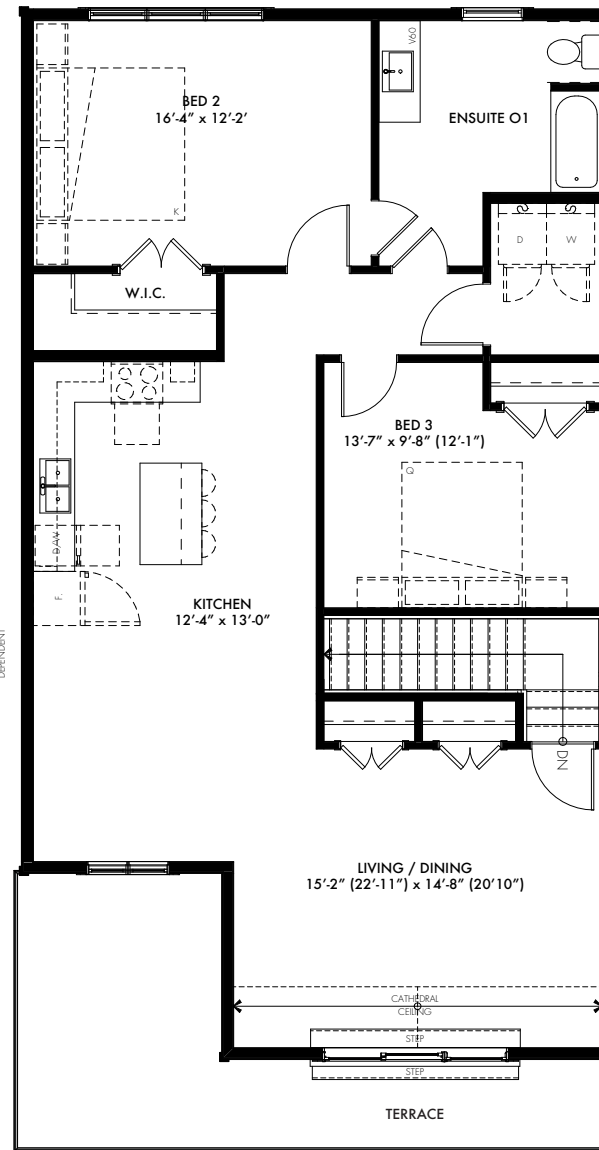
ELEVATION A



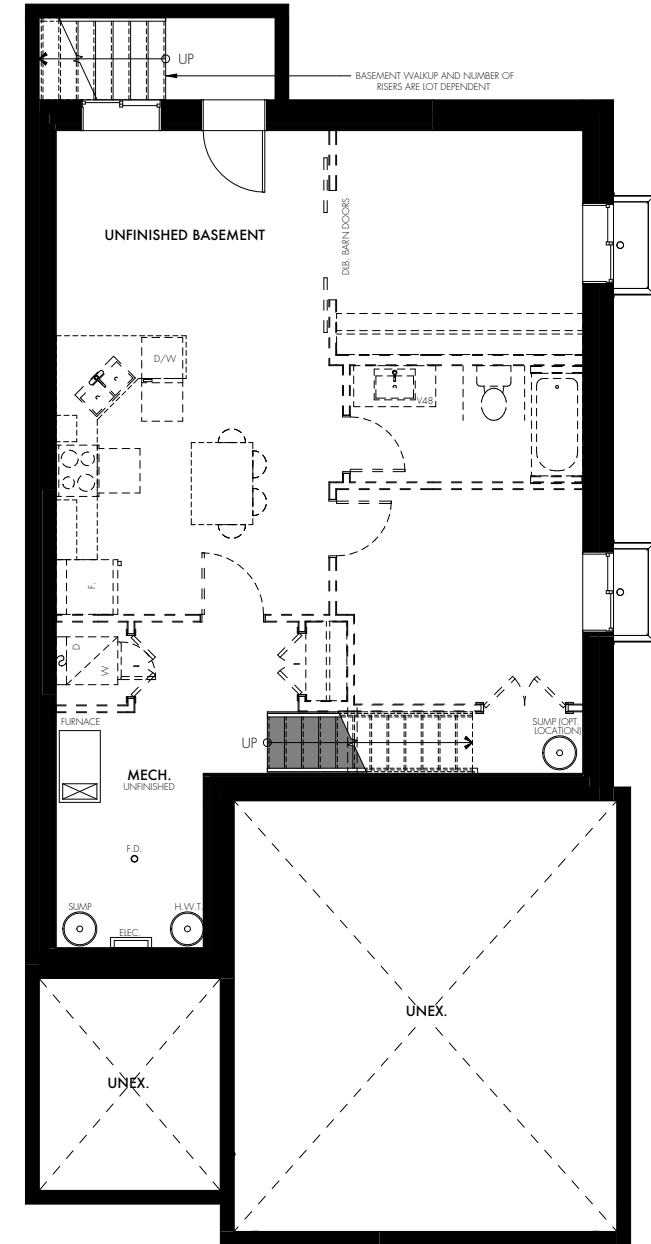
BATHROOM OPT. 2



MAIN FLOOR
1074 SQ FT



SECOND FLOOR
1363 SQ FT



BASEMENT + WALK UP
820 SQ FT

**Note: window locations, sizes, & sill heights vary per floor. The number of risers is lot dependent. Subject to certain terms and conditions as defined in the agreement of purchase and sale, features, finishes, sizes, and specifications are subject to change without notice. Furniture is displayed for illustration purposes only and does not necessarily reflect the electrical plan for the lot. Lots are sold unfurnished. All measurements are taken base x height in reference to floor plan orientation. All measurements are approximate value. Do not use for construction/square footage calculations etc. Floor plans current as of April 2022. Actual usable floor space varies from stated floor area. Please see the builder and sales representative for details. E&OE.



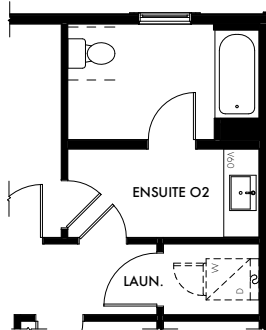
SPLENDOUR

GRANDEUR

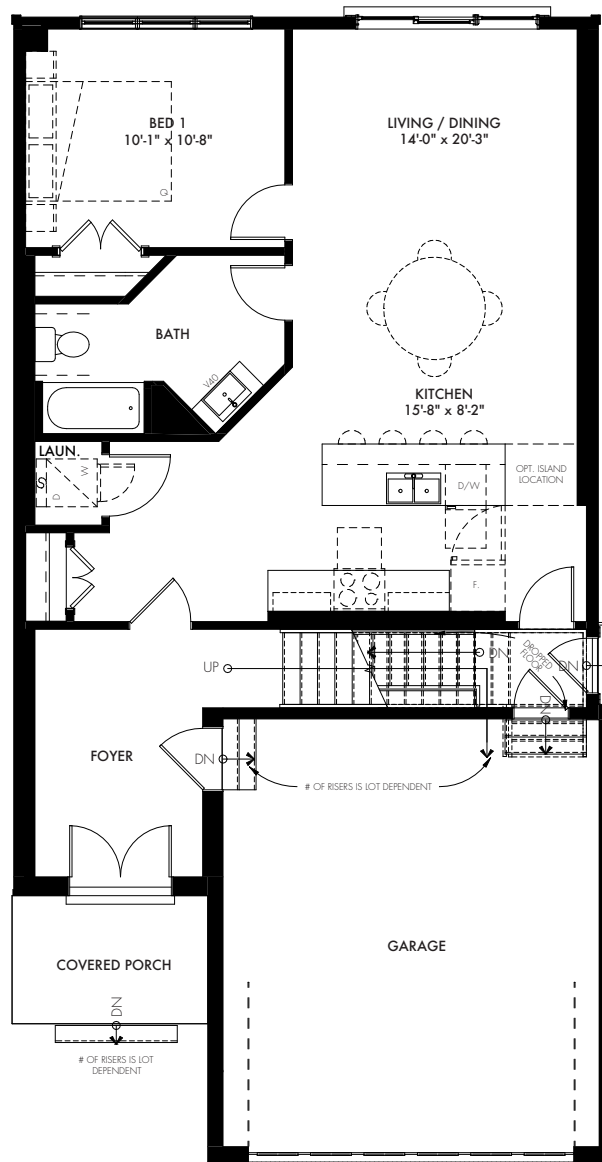
36-ML, ELEV B | 2436 SQ FT



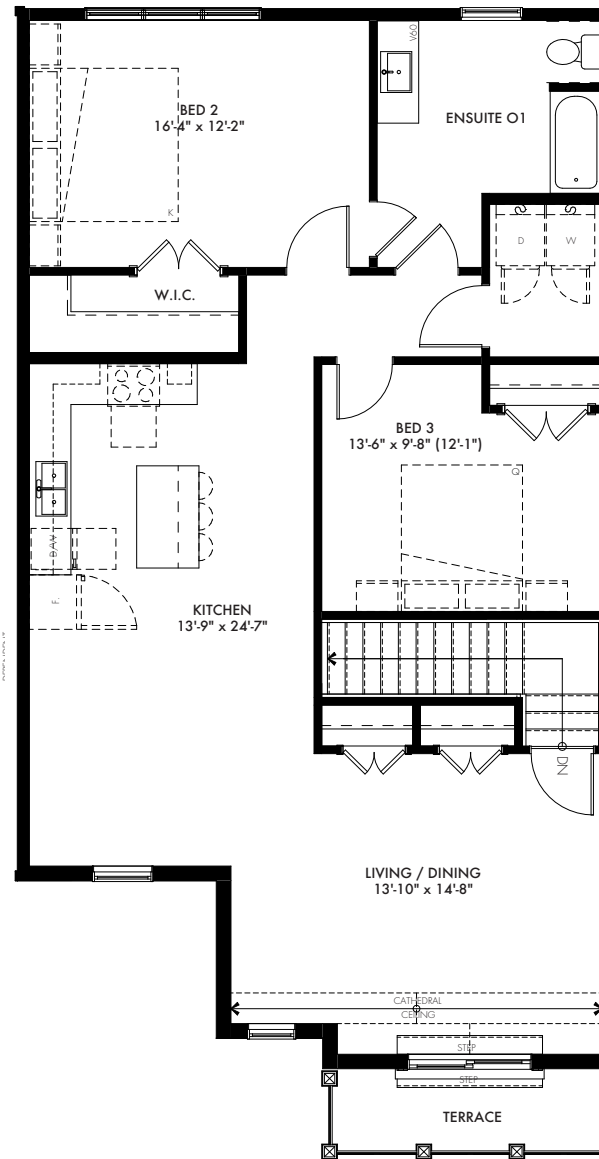
ELEVATION B



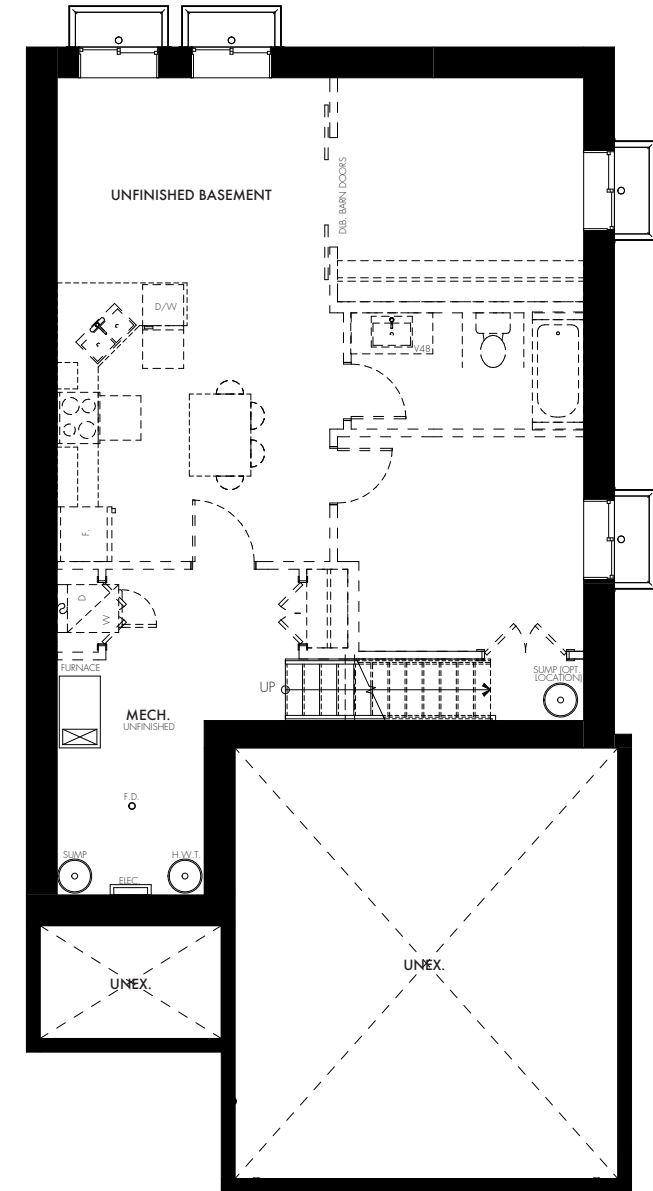
BATHROOM OPT. 2



**MAIN FLOOR
1074 SQ FT**



**SECOND FLOOR
1362 SQ FT**



**BASEMENT
817 SQ FT**

**Note: window locations, sizes, & sill heights vary per floor. The number of risers is lot dependent. Subject to certain terms and conditions as defined in the agreement of purchase and sale, features, finishes, sizes, and specifications are subject to change without notice. Furniture is displayed for illustration purposes only and does not necessarily reflect the electrical plan for the lot. Lots are sold unfurnished. All measurements are taken base x height in reference to floor plan orientation. All measurements are approximate value. Do not use for construction/square footage calculations etc. Floor plans current as of April 2022. Actual usable floor space varies from stated floor area. Please see the builder and sales representative for details. E&OE.



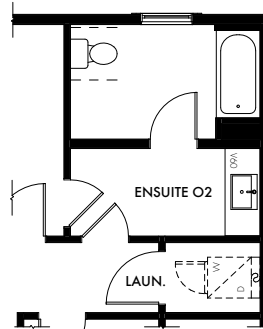
SPLENDOUR

GRANDEUR

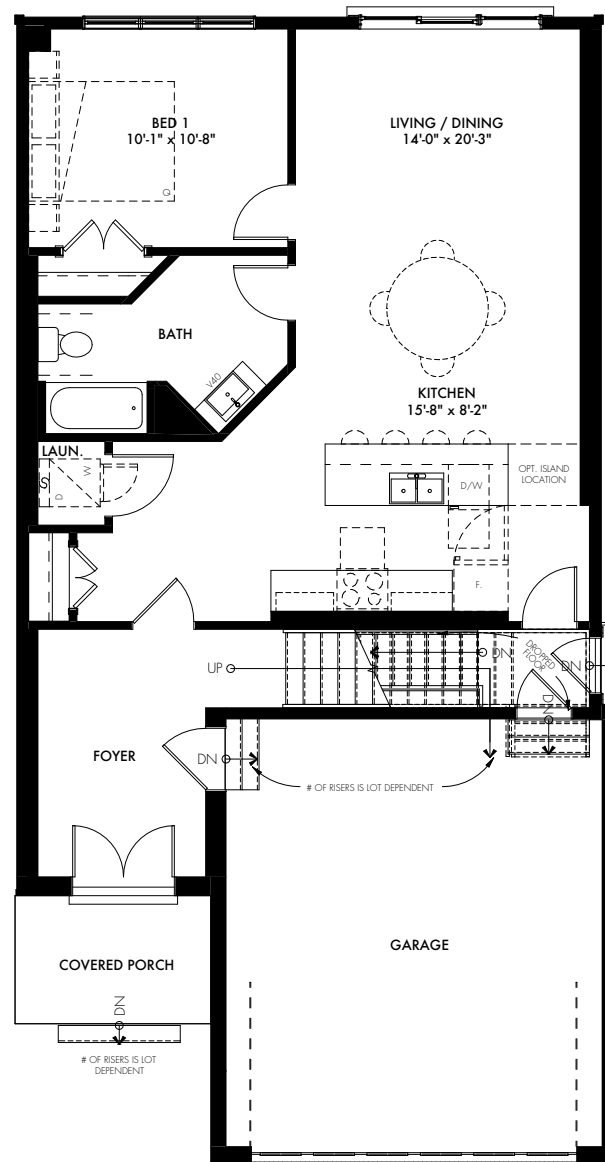
36-ML, ELEV B | 2436 SQ FT + WALK UP



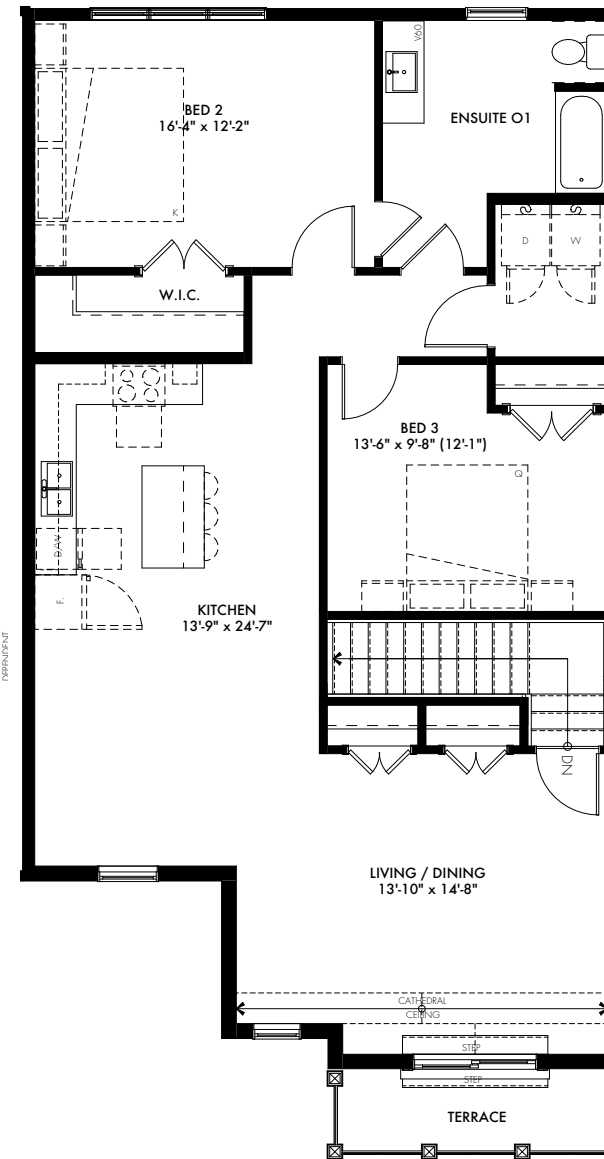
ELEVATION B



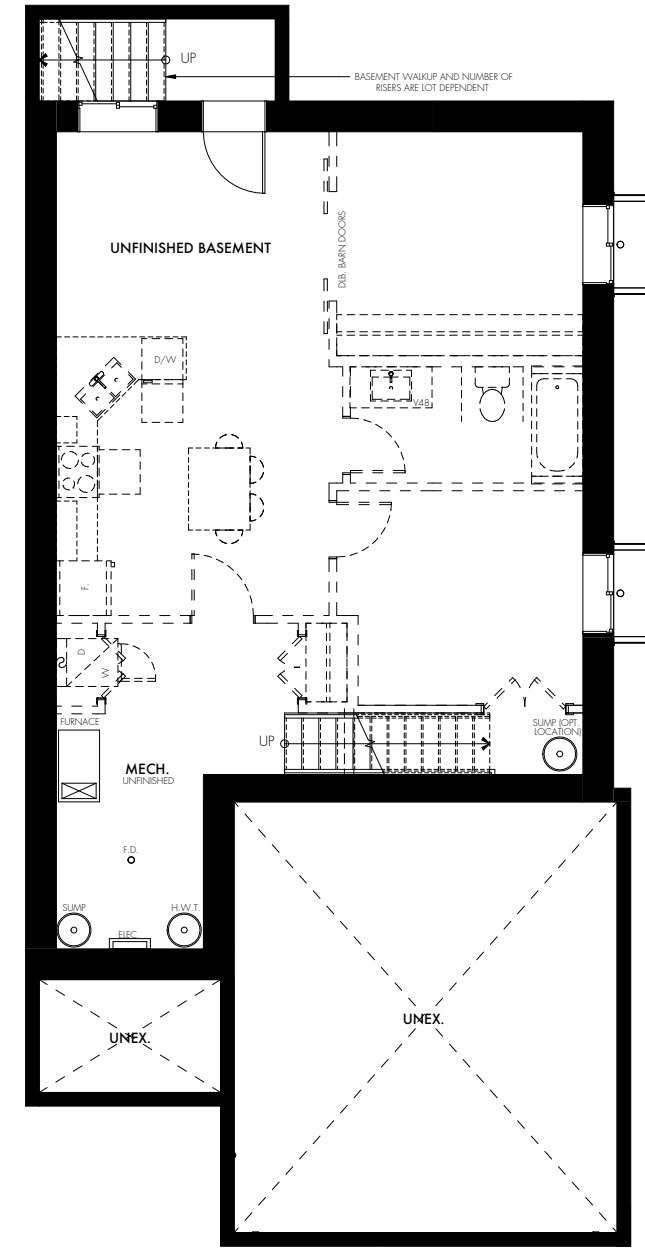
BATHROOM OPT. 2



MAIN FLOOR
1074 SQ FT



SECOND FLOOR
1362 SQ FT



BASEMENT + WALK UP
817 SQ FT

**Note: window locations, sizes, & sill heights vary per floor. The number of risers is lot dependent. Subject to certain terms and conditions as defined in the agreement of purchase and sale, features, finishes, sizes, and specifications are subject to change without notice. Furniture is displayed for illustration purposes only and does not necessarily reflect the electrical plan for the lot. Lots are sold unfurnished. All measurements are taken base x height in reference to floor plan orientation. All measurements are approximate value. Do not use for construction/square footage calculations etc. Floor plans current as of April 2022. Actual usable floor space varies from stated floor area. Please see the builder and sales representative for details. E&OE.



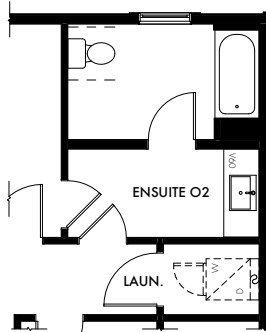
SPLENDOUR

ELEGANCE

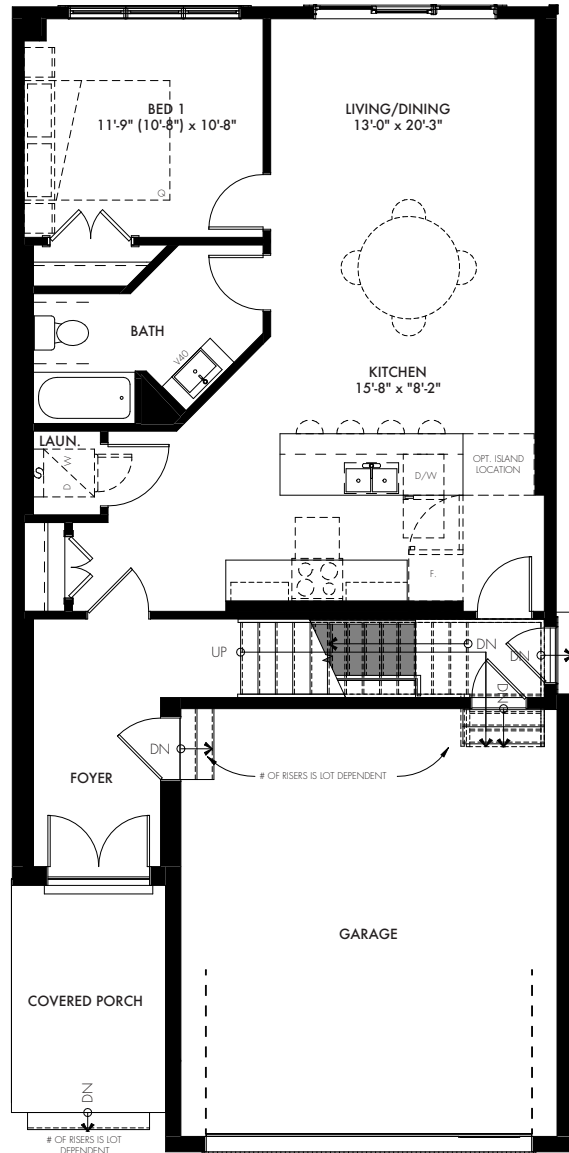
36-MM, ELEV A | 2256 SQ FT



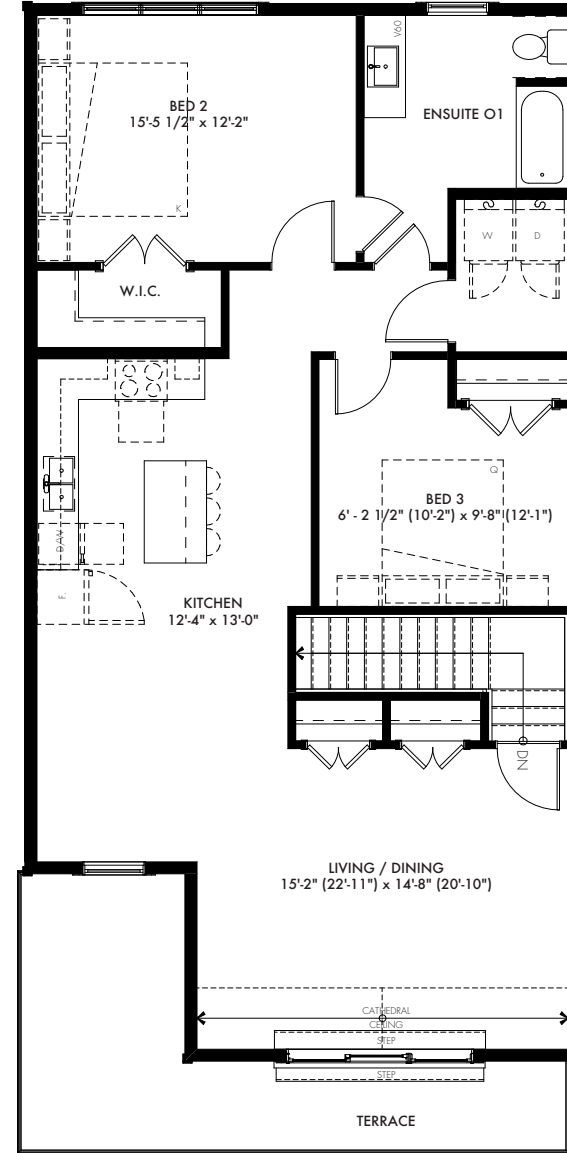
ELEVATION A



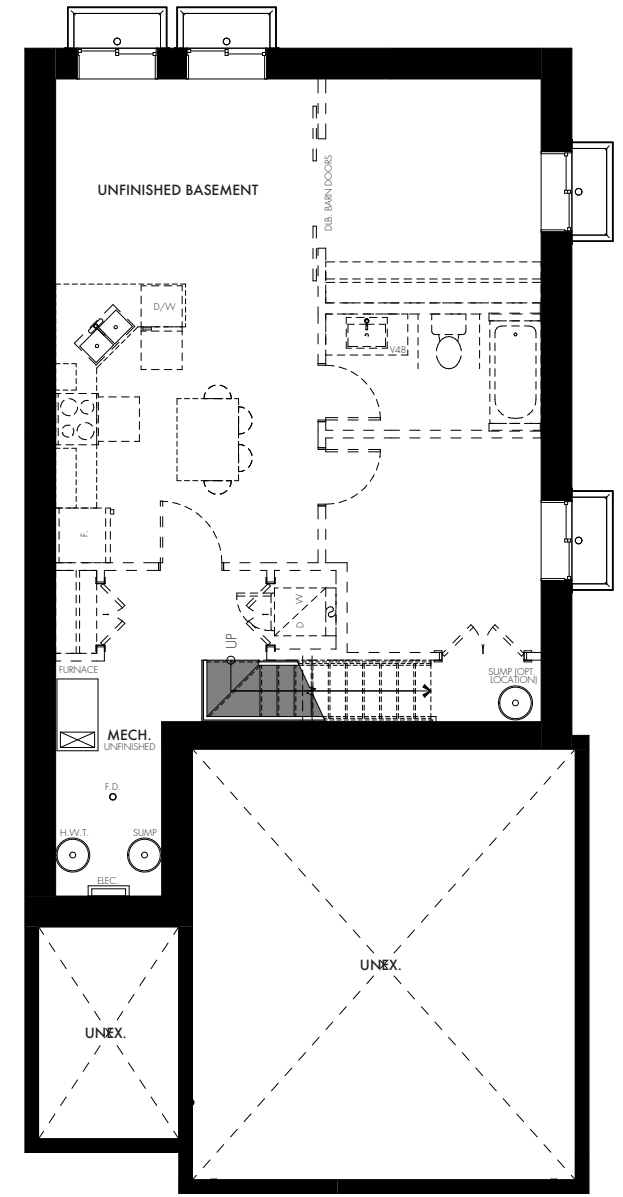
BATHROOM OPT. 2



**MAIN FLOOR
988 SQ FT**



**SECOND FLOOR
1268 SQ FT**



**BASEMENT
762 SQ FT**

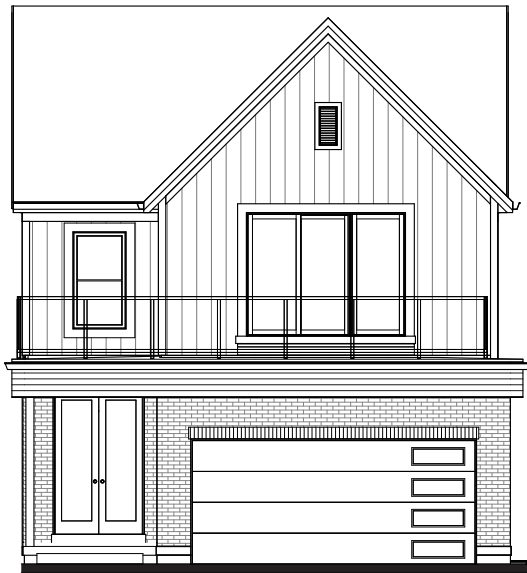
**Note: window locations, sizes, & sill heights vary per floor. The number of risers is lot dependent. Subject to certain terms and conditions as defined in the agreement of purchase and sale, features, finishes, sizes, and specifications are subject to change without notice. Furniture is displayed for illustration purposes only and does not necessarily reflect the electrical plan for the lot. Lots are sold unfurnished. All measurements are taken base x height in reference to floor plan orientation. All measurements are approximate value. Do not use for construction/square footage calculations etc. Floor plans current as of April 2022. Actual usable floor space varies from stated floor area. Please see the builder and sales representative for details. E&OE.



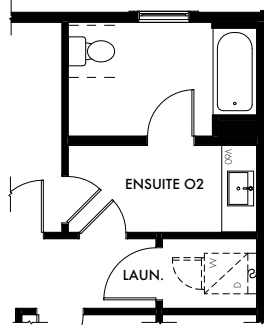
SPLENDOUR

ELEGANCE

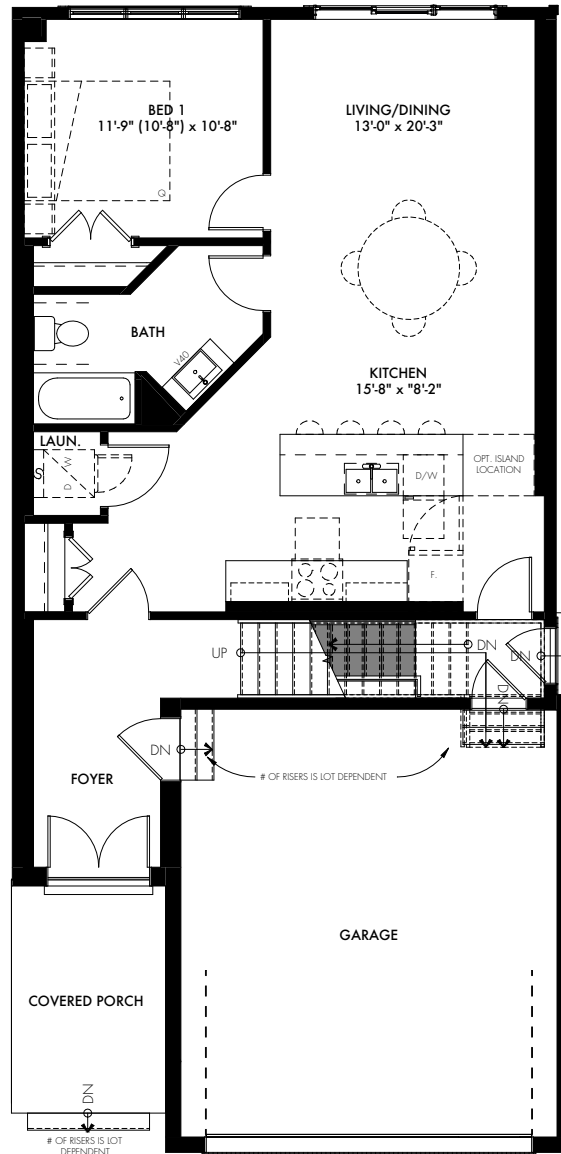
36-MM, ELEV A | 2256 SQ FT + WALK UP



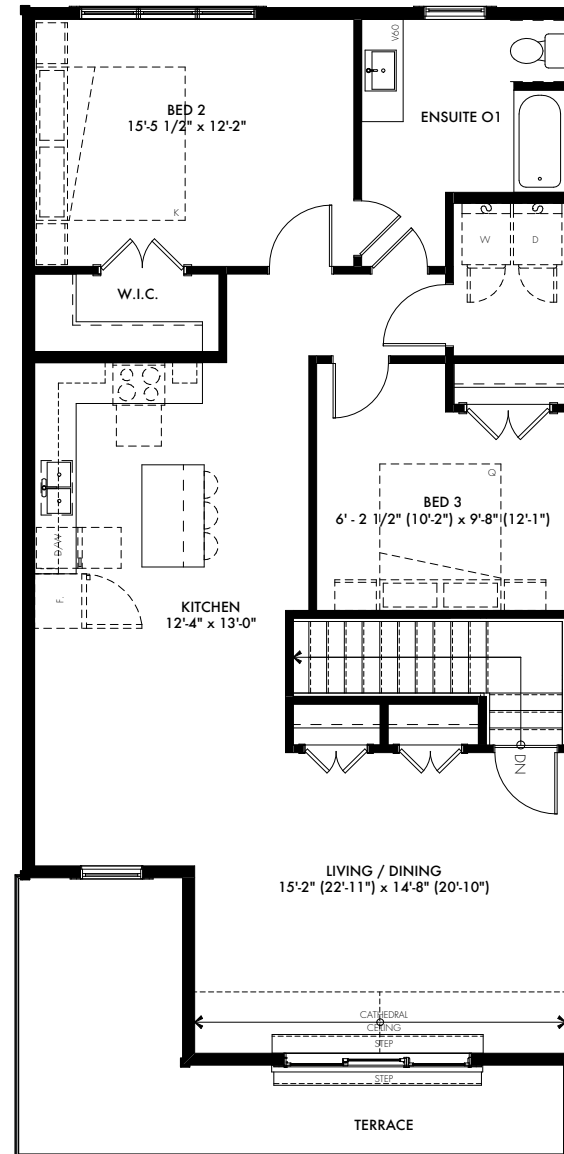
ELEVATION A



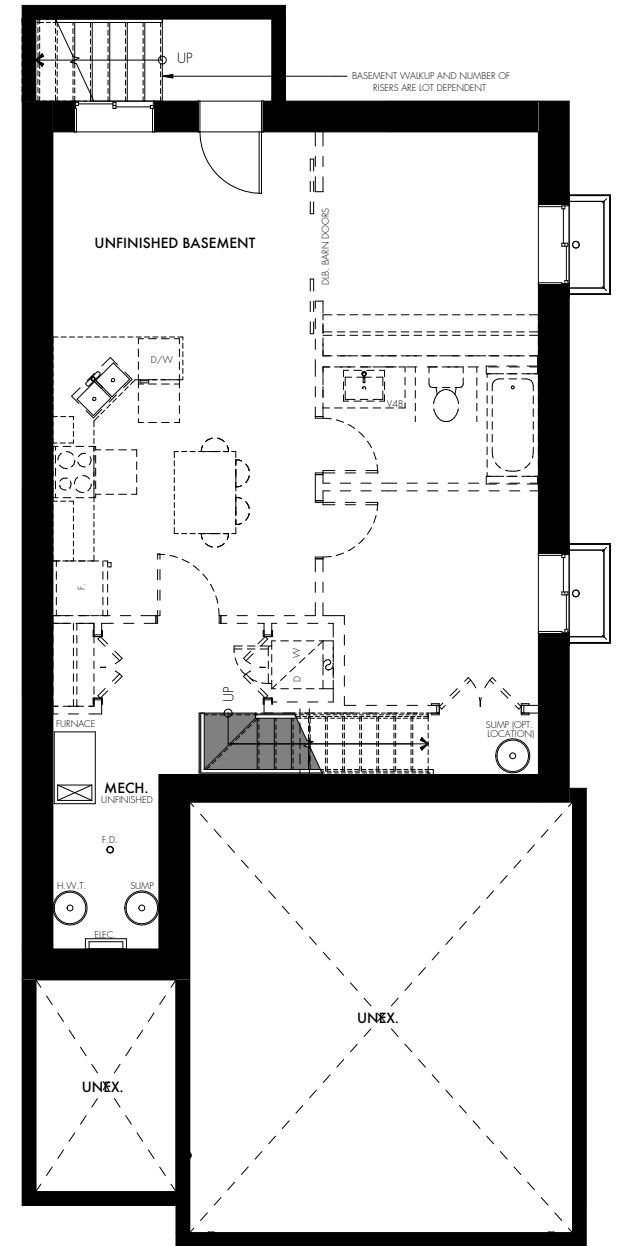
BATHROOM OPT. 2



MAIN FLOOR
988 SQ FT



SECOND FLOOR
1268 SQ FT



BASEMENT + WALK UP
762 SQ FT

**Note: window locations, sizes, & sill heights vary per floor. The number of risers is lot dependent. Subject to certain terms and conditions as defined in the agreement of purchase and sale, features, finishes, sizes, and specifications are subject to change without notice. Furniture is displayed for illustration purposes only and does not necessarily reflect the electrical plan for the lot. Lots are sold unfurnished. All measurements are taken base x height in reference to floor plan orientation. All measurements are approximate value. Do not use for construction/square footage calculations etc. Floor plans current as of April 2022. Actual usable floor space varies from stated floor area. Please see the builder and sales representative for details. E&OE.



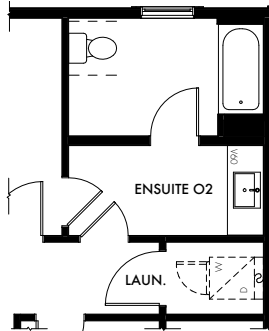
SPLENDOUR

ELEGANCE

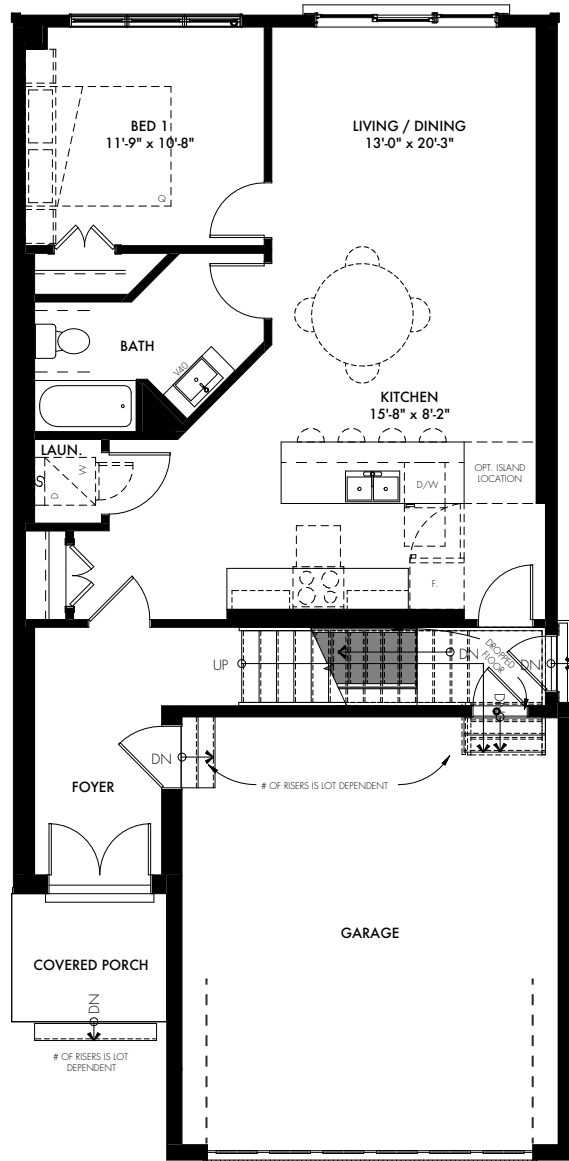
36-MM, ELEV B | 2266 SQ FT



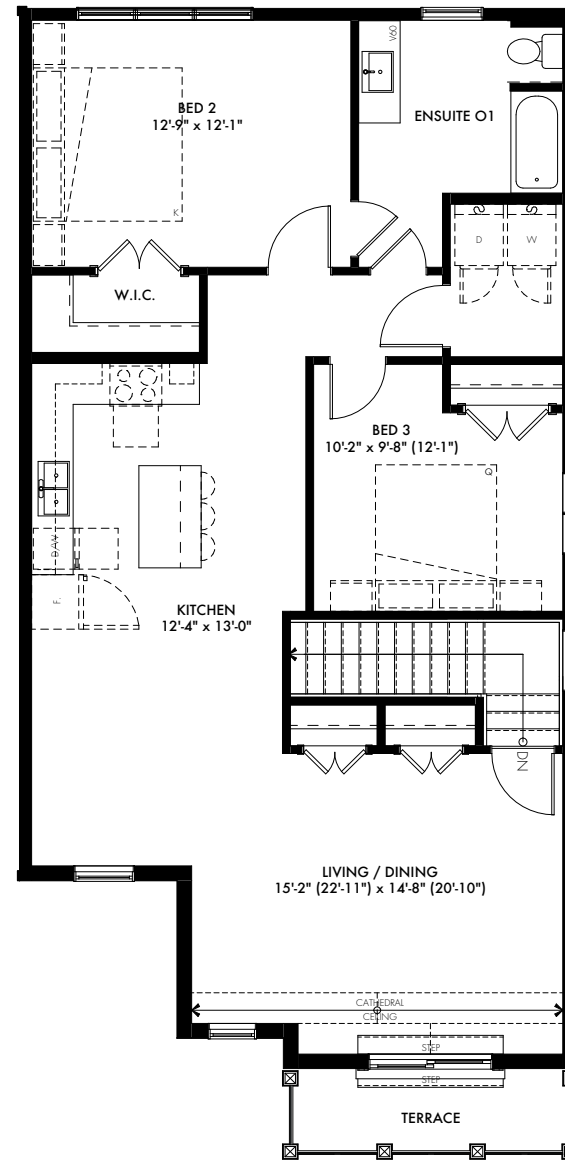
ELEVATION B



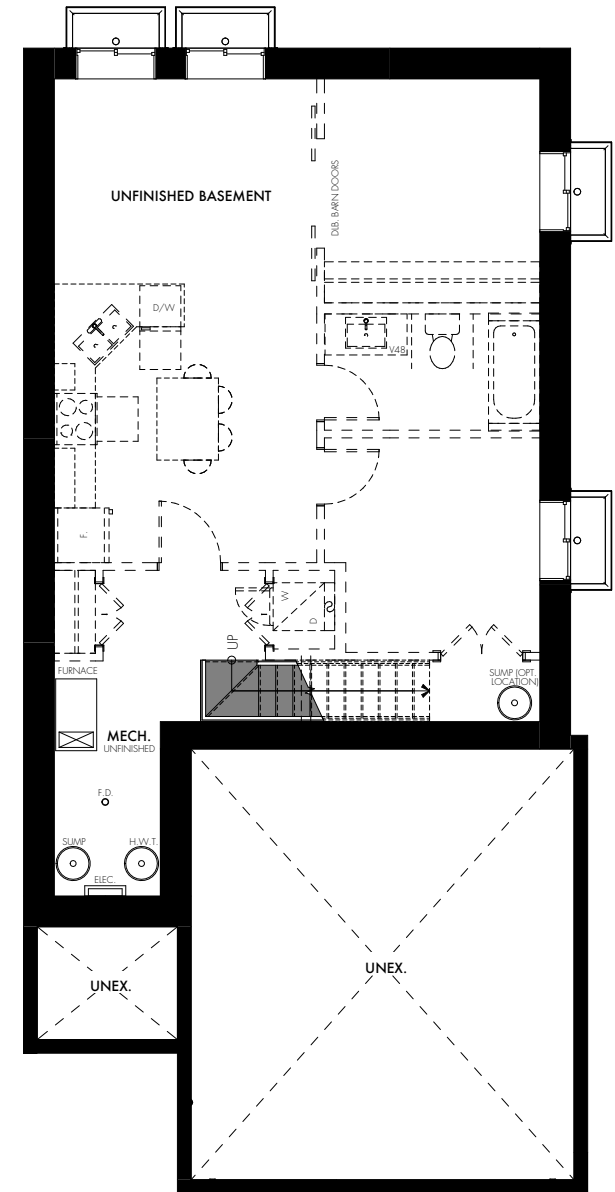
BATHROOM OPT. 2



**MAIN FLOOR
988 SQ FT**



**SECOND FLOOR
1278 SQ FT**



**BASEMENT
762 SQ FT**

**Note: window locations, sizes, & sill heights vary per floor. The number of risers is lot dependent. Subject to certain terms and conditions as defined in the agreement of purchase and sale, features, finishes, sizes, and specifications are subject to change without notice. Furniture is displayed for illustration purposes only and does not necessarily reflect the electrical plan for the lot. Lots are sold unfurnished. All measurements are taken base x height in reference to floor plan orientation. All measurements are approximate value. Do not use for construction/square footage calculations etc. Floor plans current as of April 2022. Actual usable floor space varies from stated floor area. Please see the builder and sales representative for details. E&OE.



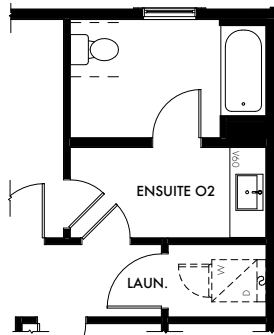
SPLENDOUR

ELEGANCE

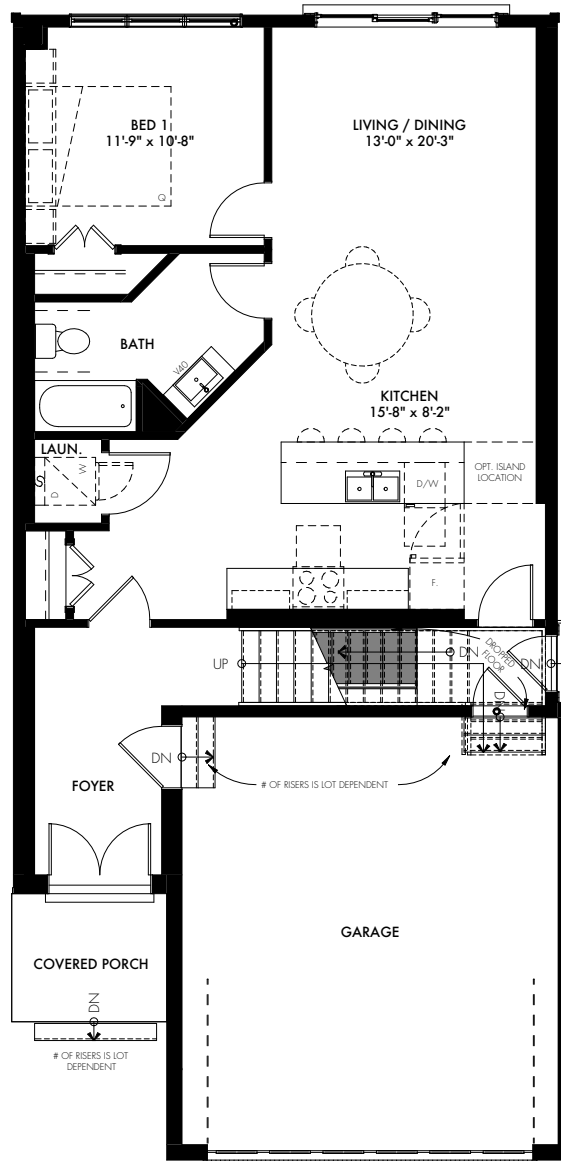
36-MM, ELEV B | 2266 SQ FT + WALK UP



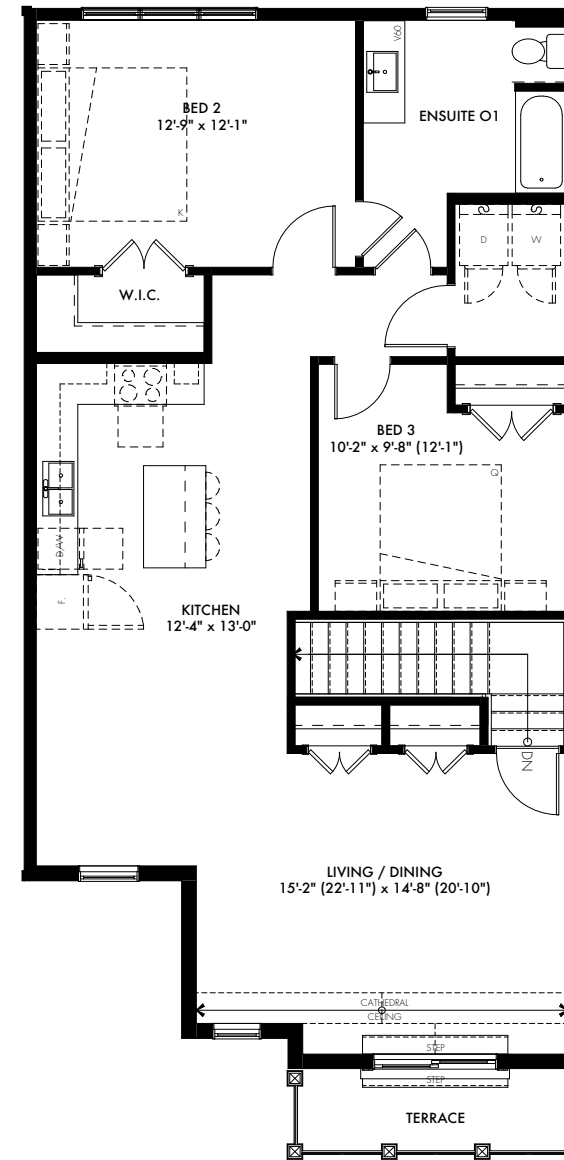
ELEVATION B



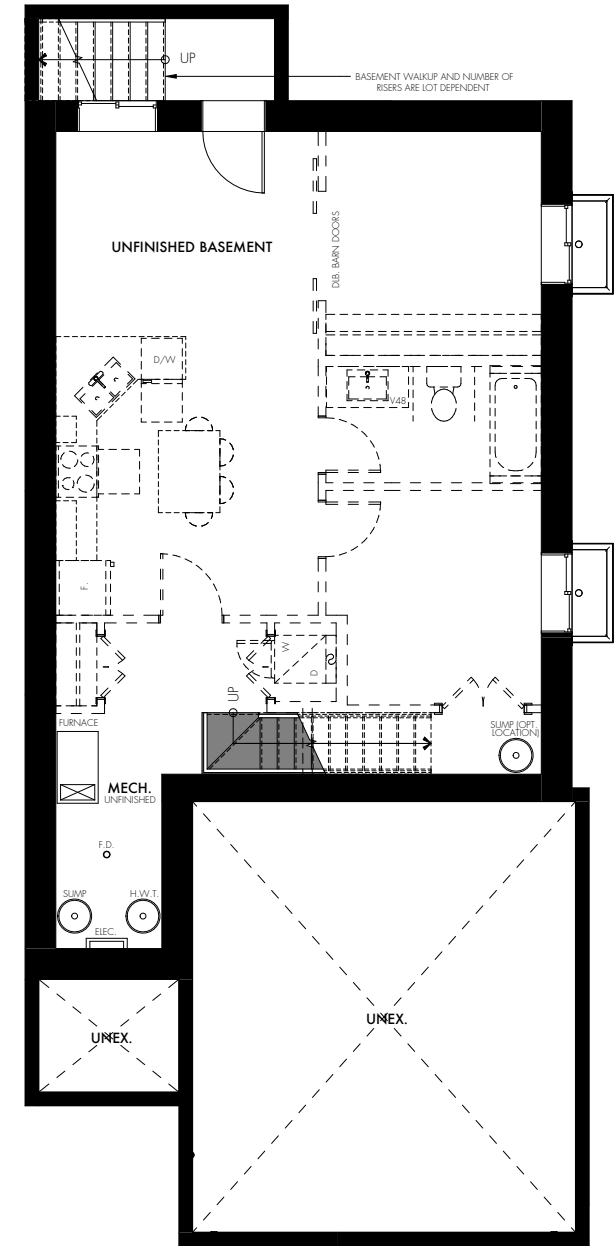
BATHROOM OPT. 2



MAIN FLOOR
988 SQ FT



SECOND FLOOR
1278 SQ FT



BASEMENT + WALK UP
762 SQ FT

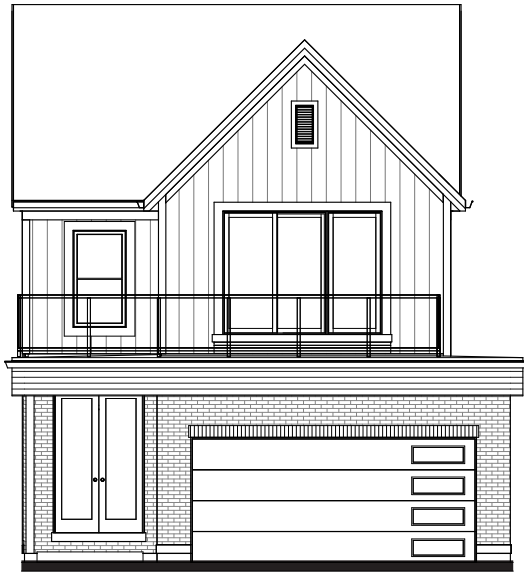
**Note: window locations, sizes, & sill heights vary per floor. The number of risers is lot dependent. Subject to certain terms and conditions as defined in the agreement of purchase and sale, features, finishes, sizes, and specifications are subject to change without notice. Furniture is displayed for illustration purposes only and does not necessarily reflect the electrical plan for the lot. Lots are sold unfurnished. All measurements are taken base x height in reference to floor plan orientation. All measurements are approximate value. Do not use for construction/square footage calculations etc. Floor plans current as of April 2022. Actual usable floor space varies from stated floor area. Please see the builder and sales representative for details. E&OE.



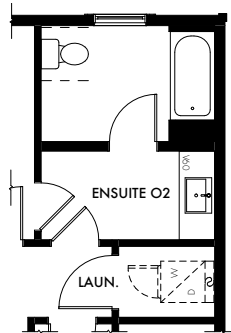
SPLENDOUR

ALLURE

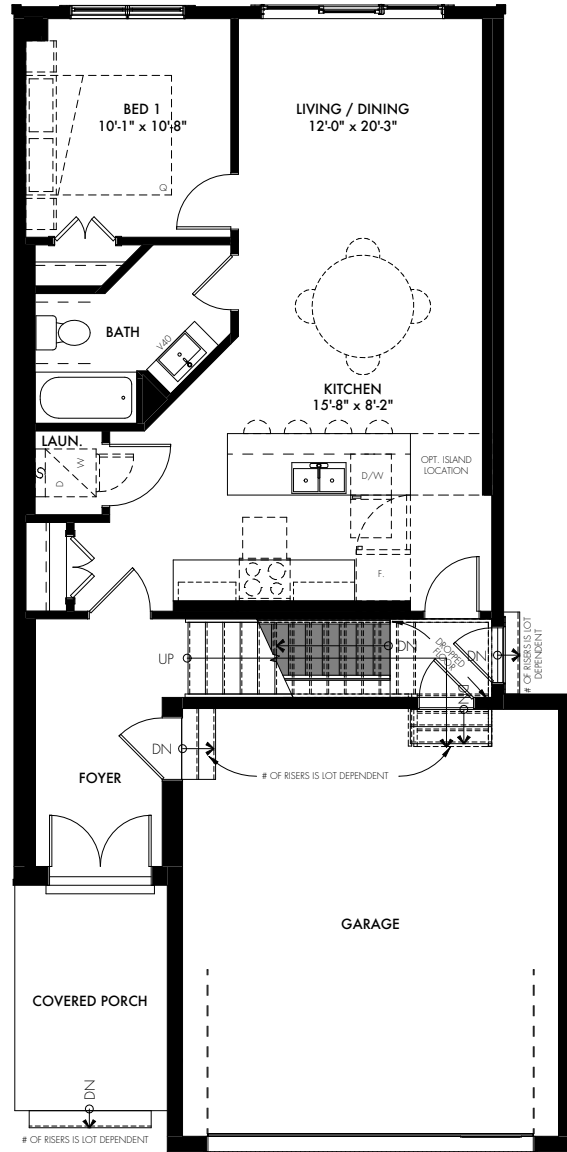
36-MS, ELEV A | 2030 SQ FT



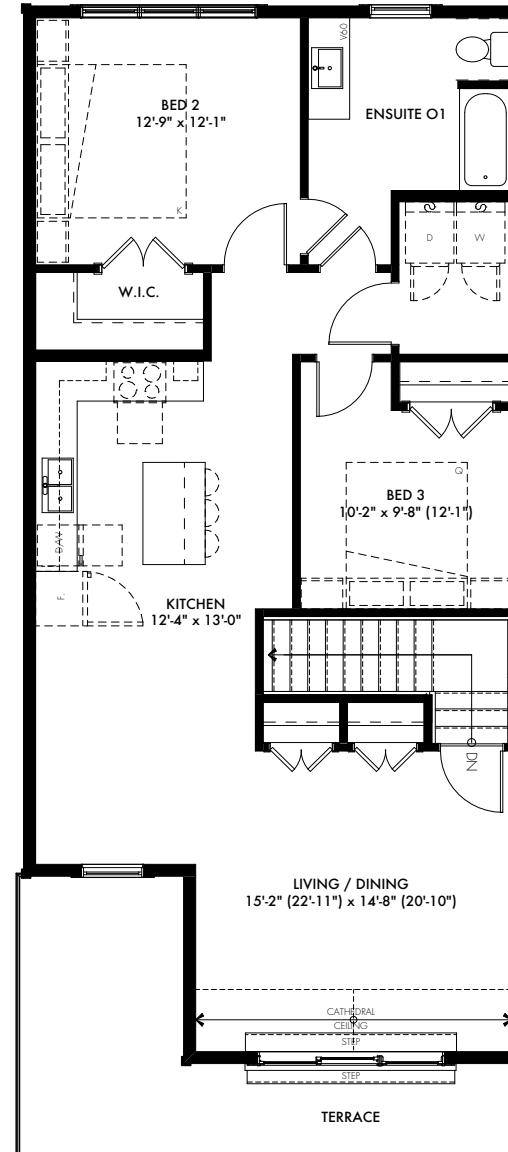
ELEVATION A



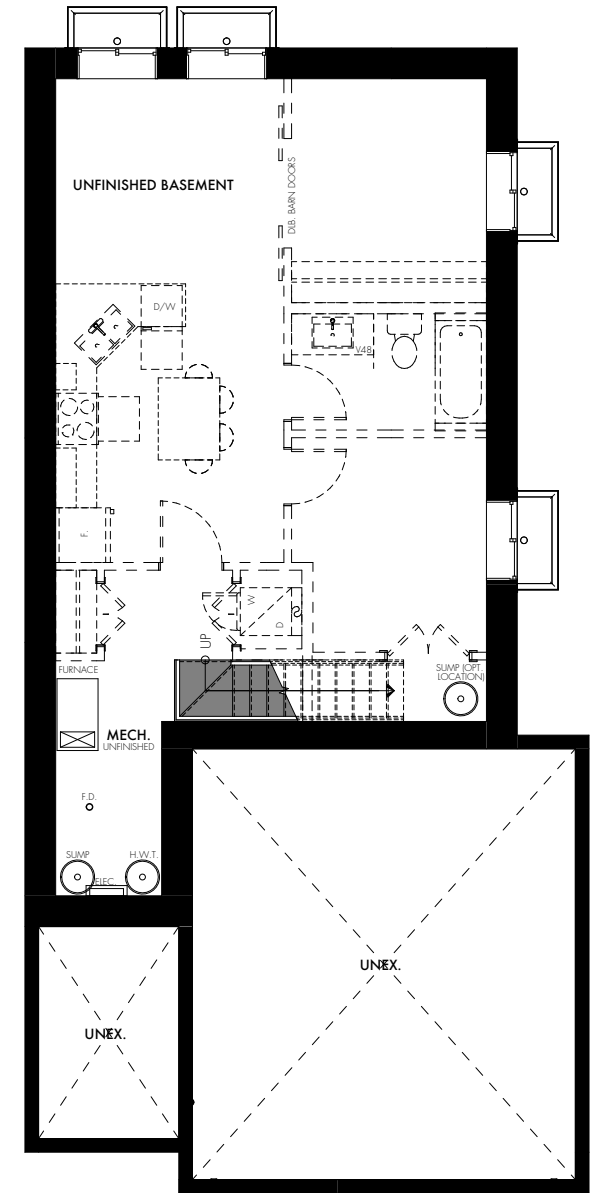
BATHROOM OPT. 2



**MAIN FLOOR
896 SQ FT**



**SECOND FLOOR
1134 SQ FT**



**BASEMENT
679 SQ FT**

**Note: window locations, sizes, & sill heights vary per floor. The number of risers is lot dependent. Subject to certain terms and conditions as defined in the agreement of purchase and sale, features, finishes, sizes, and specifications are subject to change without notice. Furniture is displayed for illustration purposes only and does not necessarily reflect the electrical plan for the lot. Lots are sold unfurnished. All measurements are taken base x height in reference to floor plan orientation. All measurements are approximate value. Do not use for construction/square footage calculations etc. Floor plans current as of April 2022. Actual usable floor space varies from stated floor area. Please see the builder and sales representative for details. E&OE.



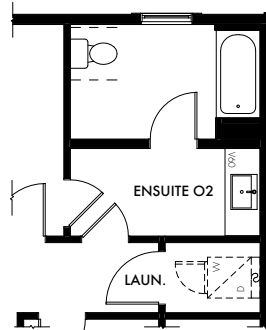
SPLENDOUR

ALLURE

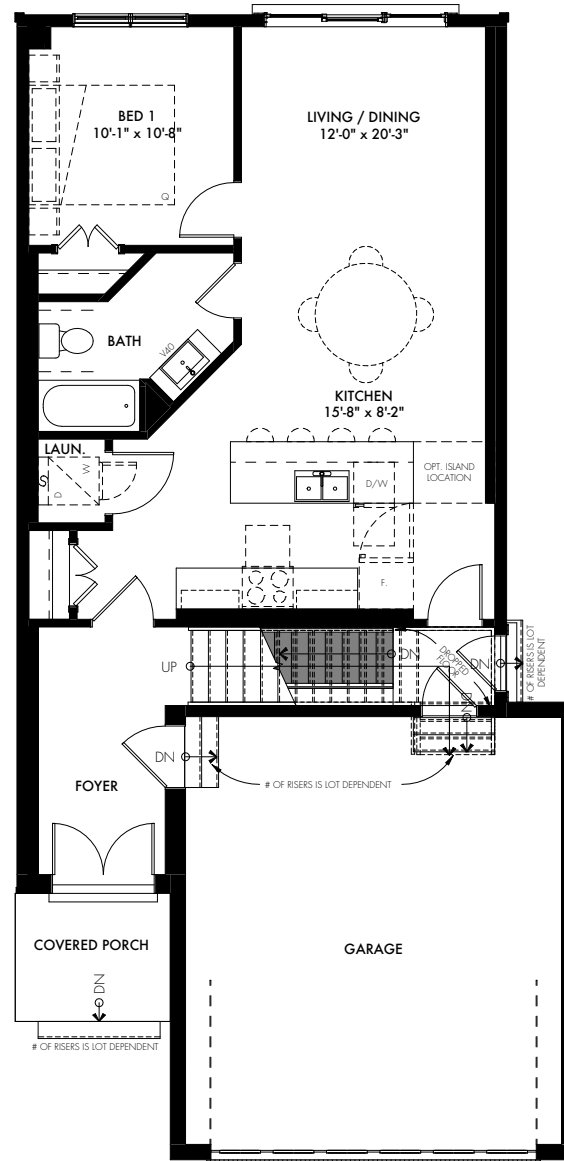
36-MS, ELEV B | 2027 SQ FT



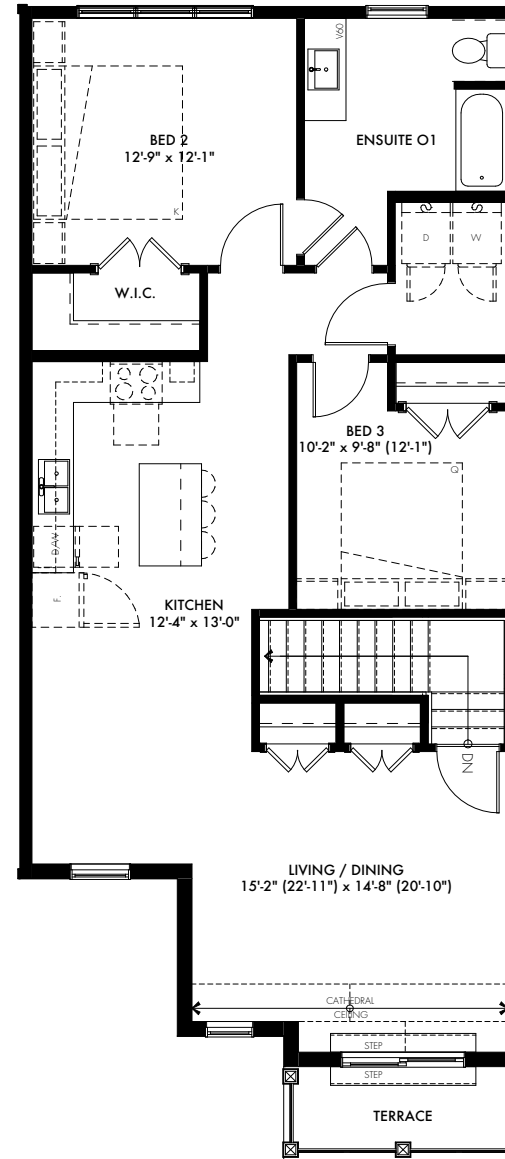
ELEVATION B



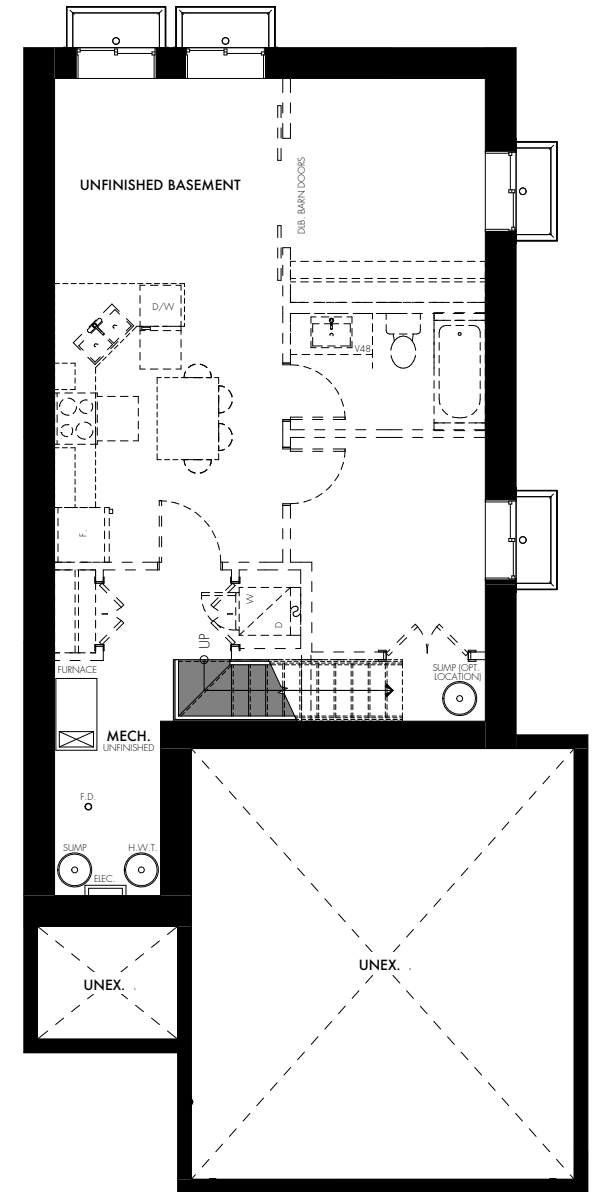
BATHROOM OPT. 2



**MAIN FLOOR
896 SQ FT**



**SECOND FLOOR
1131 SQ FT**



**BASEMENT
679 SQ FT**

**Note: window locations, sizes, & sill heights vary per floor. The number of risers is lot dependent. Subject to certain terms and conditions as defined in the agreement of purchase and sale, features, finishes, sizes, and specifications are subject to change without notice. Furniture is displayed for illustration purposes only and does not necessarily reflect the electrical plan for the lot. Lots are sold unfurnished. All measurements are taken base x height in reference to floor plan orientation. All measurements are approximate value. Do not use for construction/square footage calculations etc. Floor plans current as of April 2022. Actual usable floor space varies from stated floor area. Please see the builder and sales representative for details. E&OE.