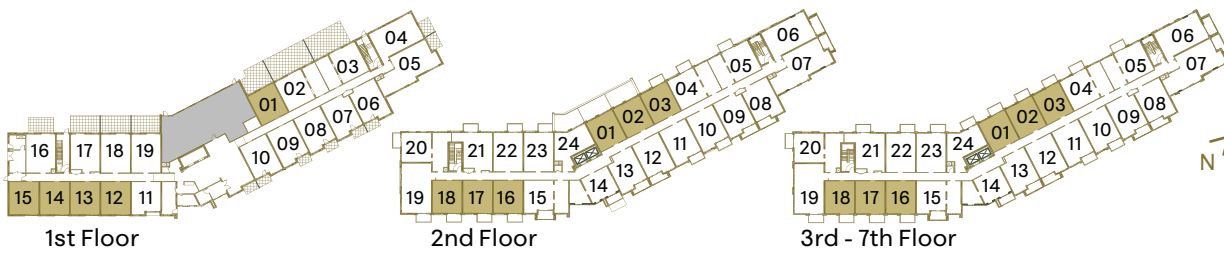
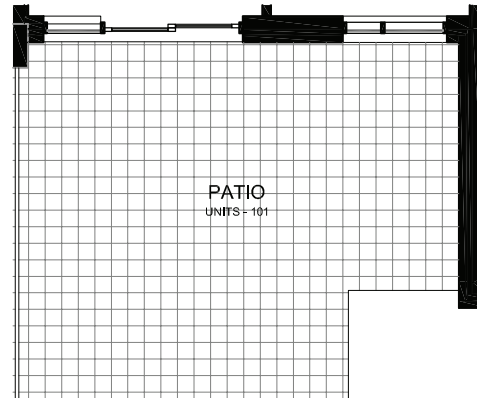
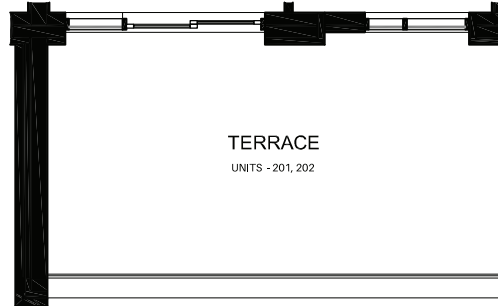
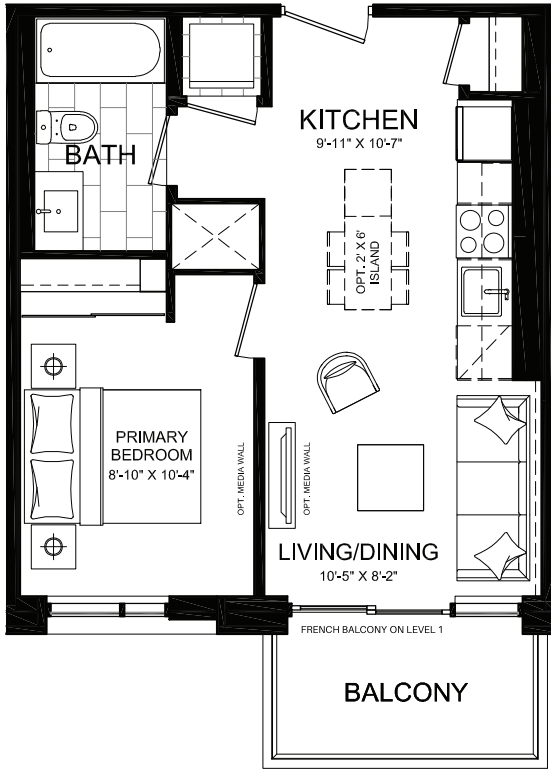


# SUITE C3B1 | C3C1

3

Interior: 483 S.F. | Exterior: 0-288 S.F. | Total: 483-771 S.F.  
 C3B1: Floors 1 & 7 (10' ceilings) | C3C1: Floors 2-6 (9' ceilings)



CLOCKW<sup>3</sup>ORK

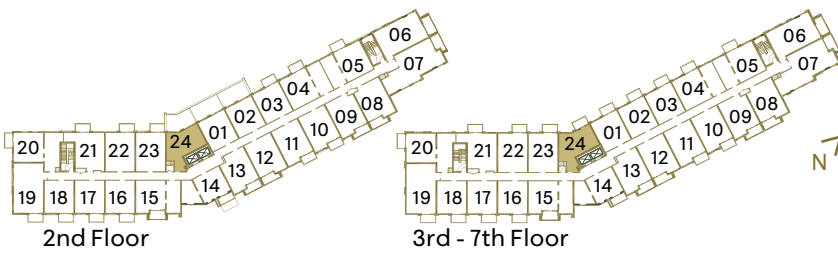
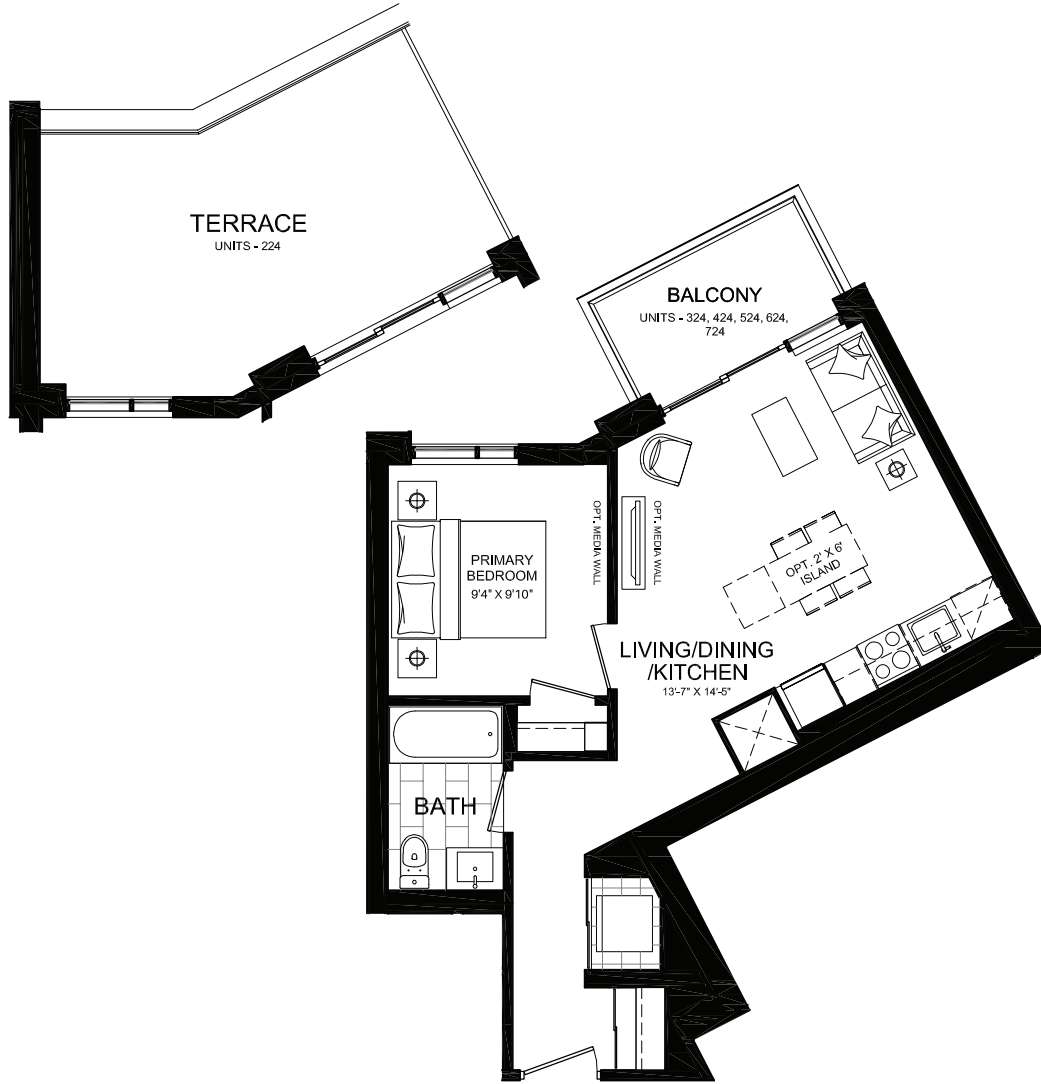
All illustrations are artist's concept. Materials, specifications, floor plans, terms and conditions are subject to change without notice. All room sizes are approximate dimensions. Actual square footage and usage floor space may vary slightly from those stated. Ceilings and walls may be modified to accommodate the mechanical and electrical systems. The unit shown may be the reverse of the unit built. E. & O.E.

1 BEDROOM — 483 SQ FT

# SUITE C3M1 | C3S1

3

Interior: 571 S.F. | Exterior: 49-211 S.F. | Total: 620-782 S.F.  
 C3M1: Floors 2-6 (9' ceilings) | C3S1: Floor 7 (10' ceilings)



1 BEDROOM — 571 SQ FT



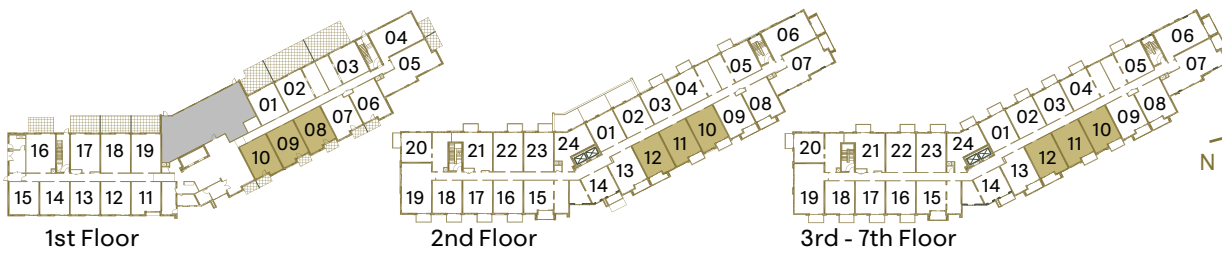
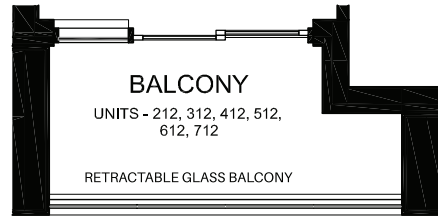
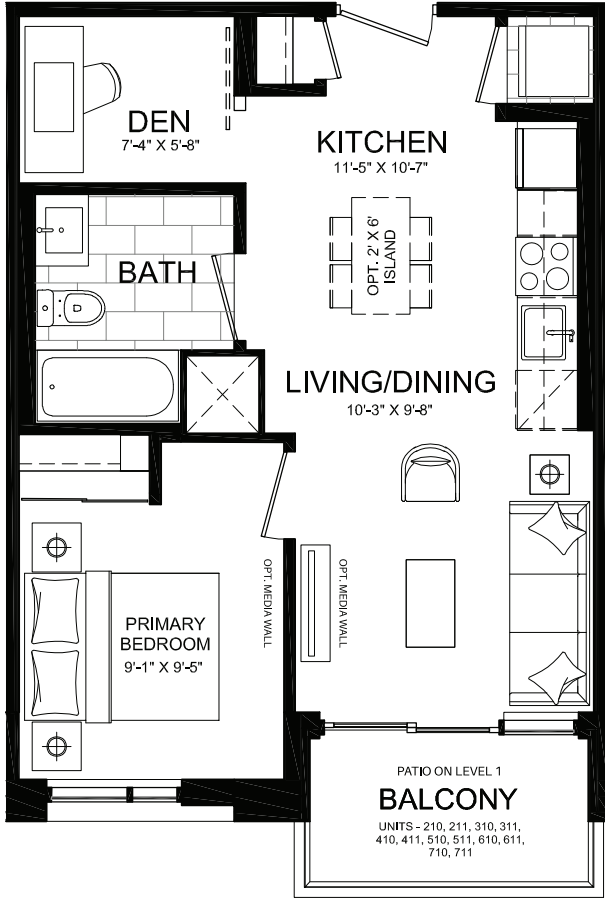
CLOCKW<sup>3</sup>ORK

All illustrations are artist's concept. Materials, specifications, floor plans, terms and conditions are subject to change without notice. All room sizes are approximate dimensions. Actual square footage and usage floor space may vary slightly from those stated. Ceilings and walls may be modified to accommodate the mechanical and electrical systems. The unit shown may be the reverse of the unit built. E. & O.E.

# SUITE C3H1 | C3I1

3

Interior: 546 S.F. | Exterior: 47-55 S.F. | Total: 593-601 S.F.  
 C3H1: Floors 1 & 7 (10' ceilings) | C3I1: Floors 2-6 (9' ceilings)



CLOCKW<sup>3</sup>ORK

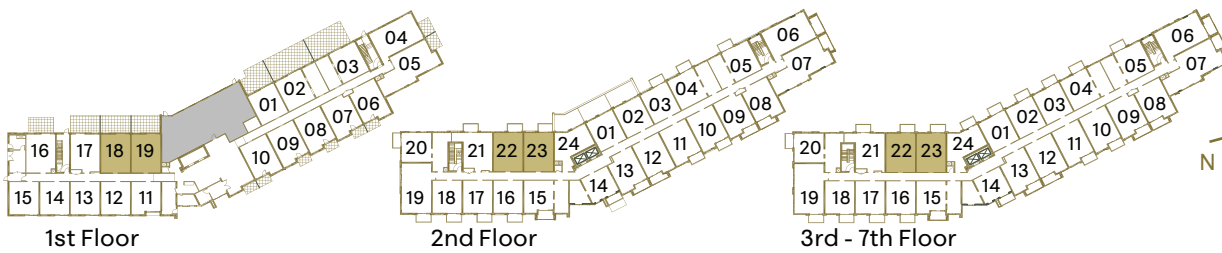
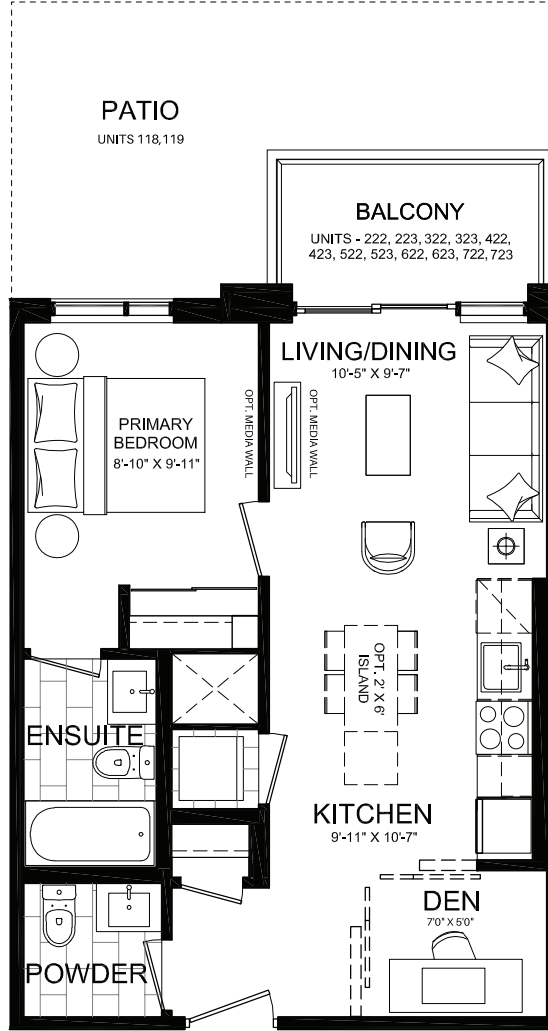
All illustrations are artist's concept. Materials, specifications, floor plans, terms and conditions are subject to change without notice. All room sizes are approximate dimensions. Actual square footage and usage floor space may vary slightly from those stated. Ceilings and walls may be modified to accommodate the mechanical and electrical systems. The unit shown may be the reverse of the unit built. E. & O.E. This is a barrier free unit.

1 BEDROOM + DEN - 546 SQ FT

# SUITE C3K1 | C3L1

3

Interior: 571 S.F. | Exterior: 48-239 S.F. | Total: 619-810 S.F.  
 C3K1: Floors 1 & 7 (10' ceilings) | C3L1: Floors 2-6 (9' ceilings)



CLOCKWORK

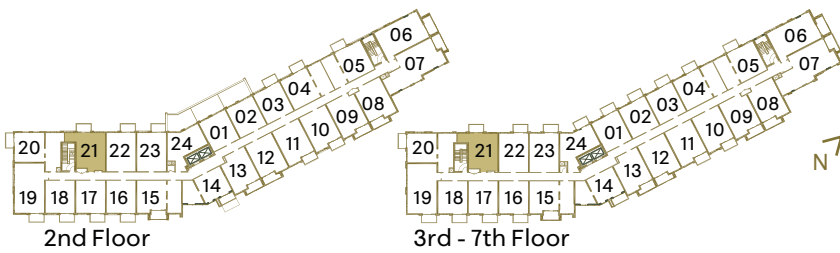
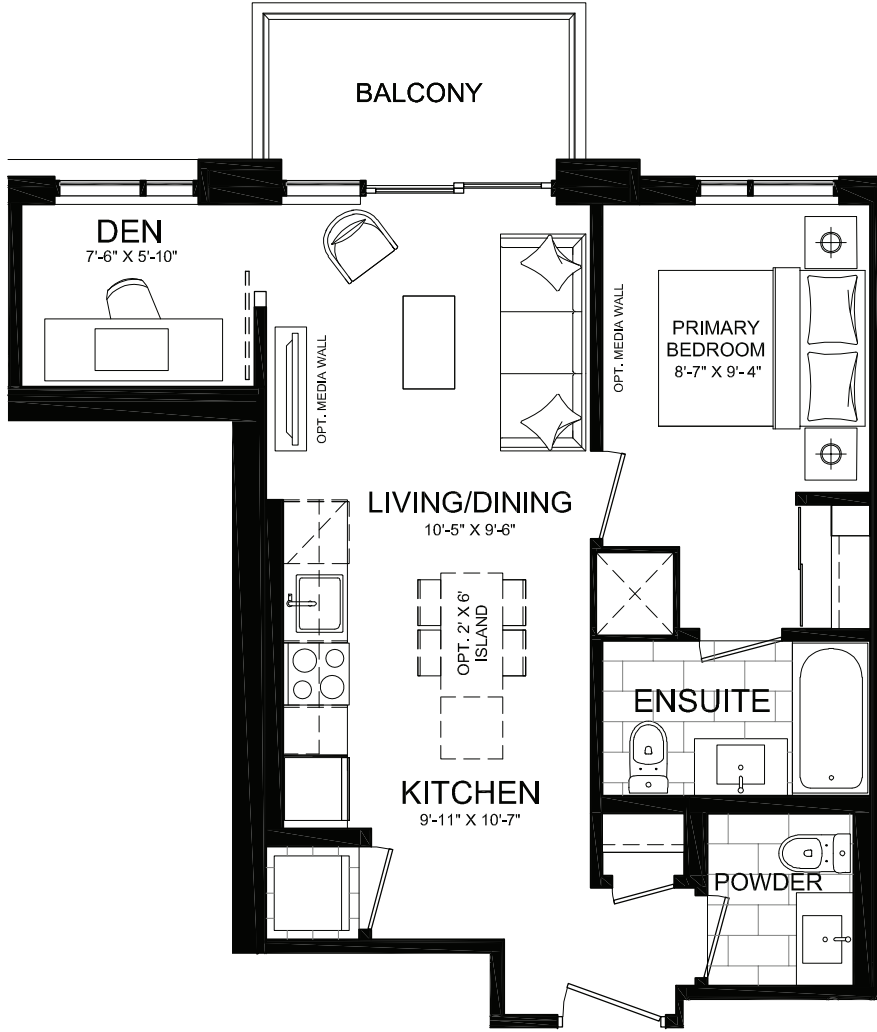
All illustrations are artist's concept. Materials, specifications, floor plans, terms and conditions are subject to change without notice. All room sizes are approximate dimensions. Actual square footage and usage floor space may vary slightly from those stated. Ceilings and walls may be modified to accommodate the mechanical and electrical systems. The unit shown may be the reverse of the unit built. E. & O.E.

1 BEDROOM + DEN — 571 SQ FT

# SUITE C301 | C3P1

3

Interior: 614 S.F. | Exterior: 49 S.F. | Total: 663 S.F.  
 C301: Floors 2-6 (9' ceilings) | C3P1: Floor 7 (10' ceilings)



1 BEDROOM + DEN — 614 SQ FT



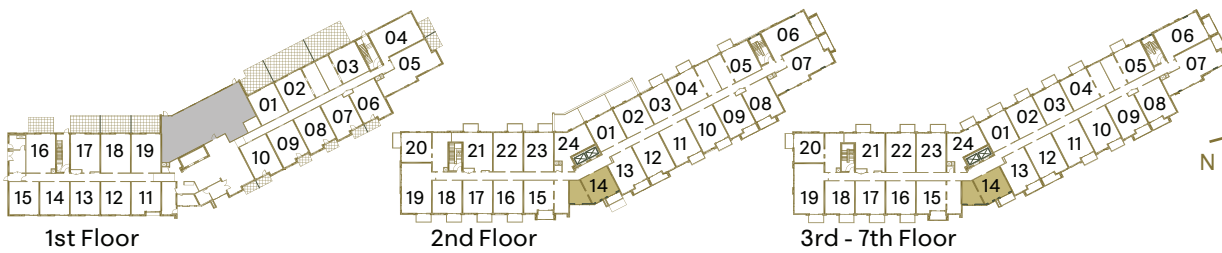
CLOCKW<sup>3</sup>ORK

All illustrations are artist's concept. Materials, specifications, floor plans, terms and conditions are subject to change without notice. All room sizes are approximate dimensions. Actual square footage and usage floor space may vary slightly from those stated. Ceilings and walls may be modified to accommodate the mechanical and electrical systems. The unit shown may be the reverse of the unit built. E. & O.E.

# SUITE C3Q1 | C3R1

3

Interior: 616 S.F. | Exterior: 47 S.F. | Total: 663 S.F.  
 C3Q1: Floors 2-6 (9' ceilings) | C3R1: Floor 7 (10' ceilings)



1 BEDROOM + DEN — 616 SQ FT



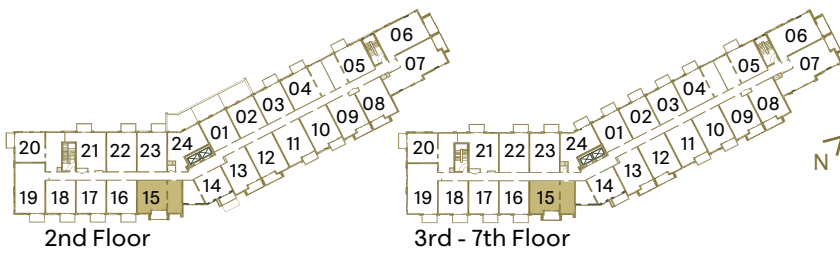
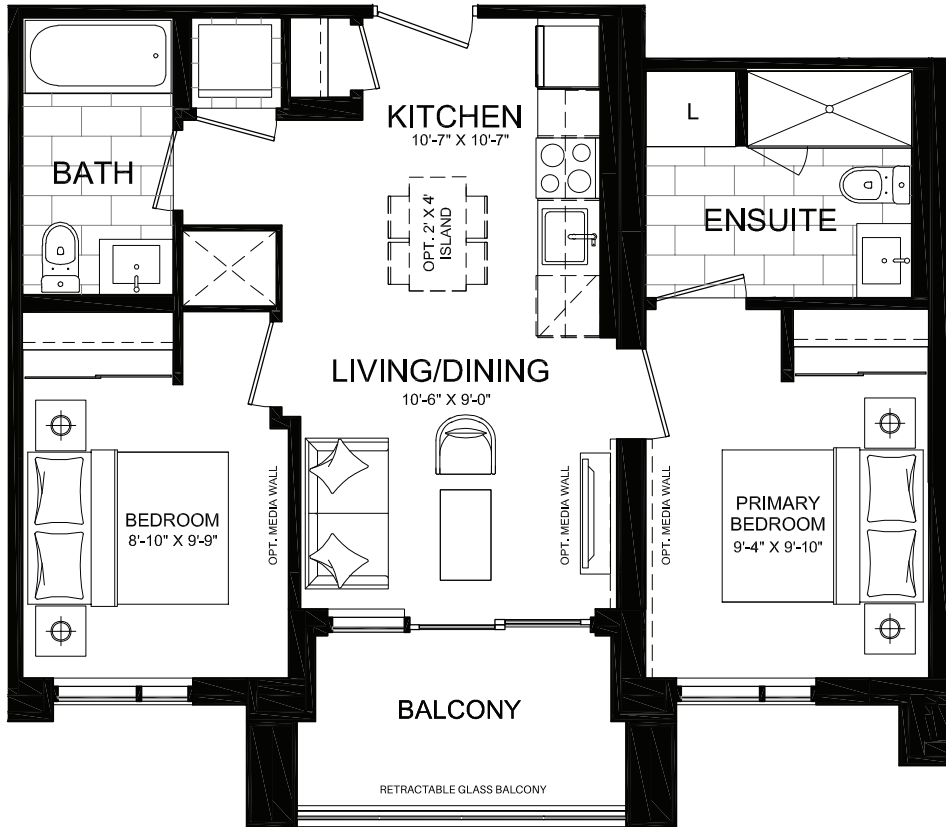
CLOCKW<sup>3</sup>ORK

All illustrations are artist's concept. Materials, specifications, floor plans, terms and conditions are subject to change without notice. All room sizes are approximate dimensions. Actual square footage and usage floor space may vary slightly from those stated. Ceilings and walls may be modified to accommodate the mechanical and electrical systems. The unit shown may be the reverse of the unit built. E. & O.E.

# SUITE C3A2 | C3K2

3

Interior: 704 S.F. | Exterior: 58 S.F. | Total: 762 S.F.  
 C3A2: Floors 2-6 (9' ceilings) | C3K2: Floor 7 (10' ceilings)



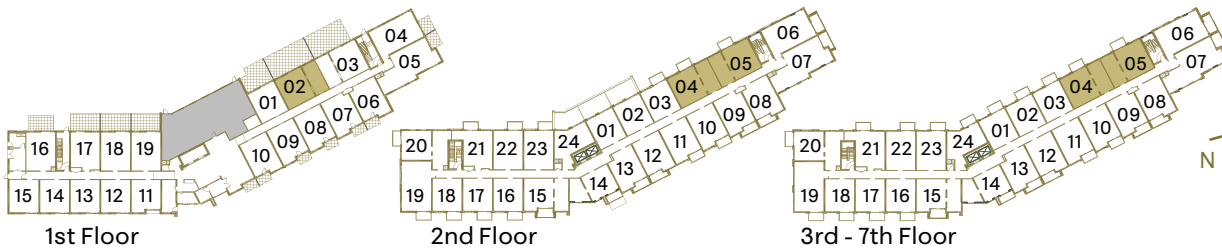
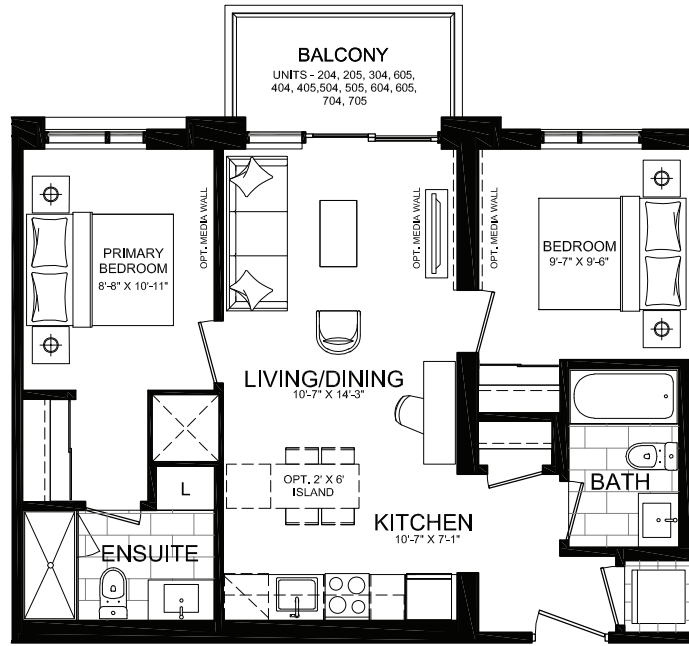
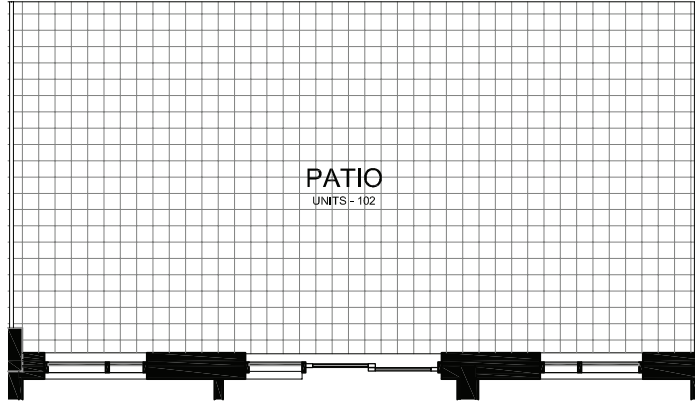
CLOCKW<sup>3</sup>ORK

All illustrations are artist's concept. Materials, specifications, floor plans, terms and conditions are subject to change without notice. All room sizes are approximate dimensions. Actual square footage and usage floor space may vary slightly from those stated. Ceilings and walls may be modified to accommodate the mechanical and electrical systems. The unit shown may be the reverse of the unit built. E. & O.E. This is a barrier-free suite.

2 BEDROOM – 704 SQ FT

# SUITE C3C2 | C3D2

Interior: 725 S.F. | Exterior: 49-490 S.F. | Total: 774-1215 S.F.  
 C3C2: Floors 1 & 7 (10' ceilings) | C3D2: Floors 2-6 (9' ceilings)



CLOCKWORK

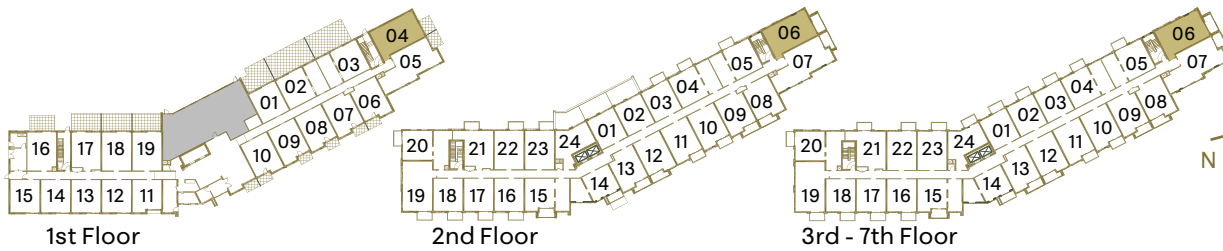
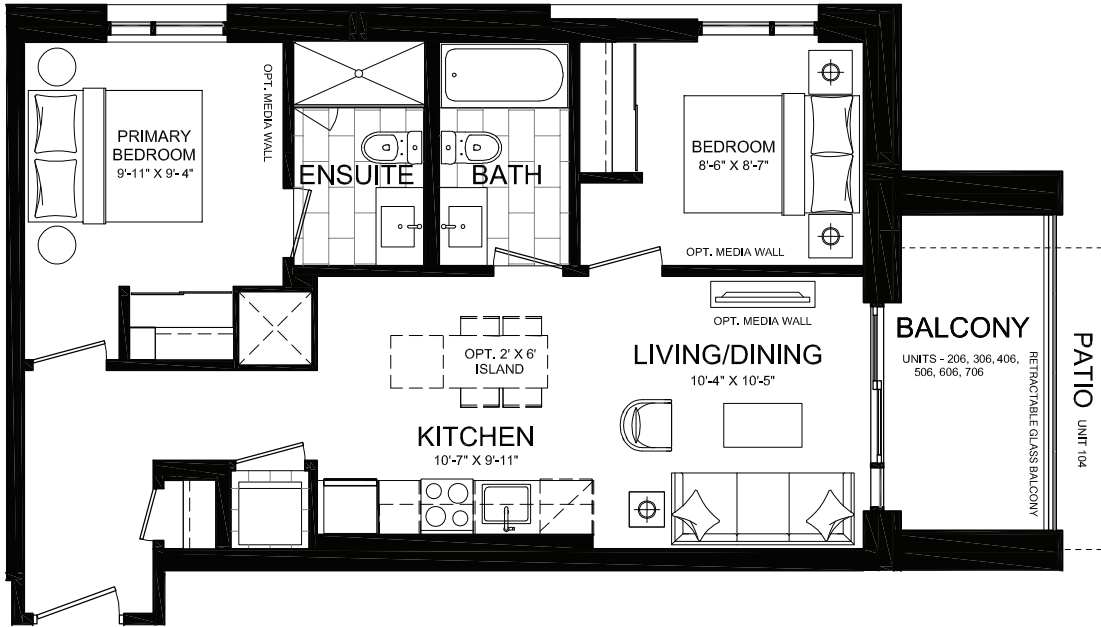
All illustrations are artist's concept. Materials, specifications, floor plans, terms and conditions are subject to change without notice. All room sizes are approximate dimensions. Actual square footage and usage floor space may vary slightly from those stated. Ceilings and walls may be modified to accommodate the mechanical and electrical systems. The unit shown may be the reverse of the unit built. E. & O.E.

2 BEDROOM - 725 SQ FT



# SUITE C3E2 | C3F2

Interior: 743 S.F. | Exterior: 66-88 S.F. | Total: 809-831 S.F.  
 C3E2: Floors 1 & 7 (10' ceilings) | C3F2: Floors 2-6 (9' ceilings)



CLOCKW<sup>3</sup>ORK

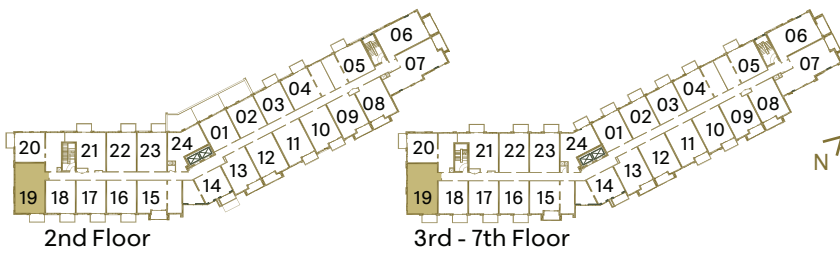
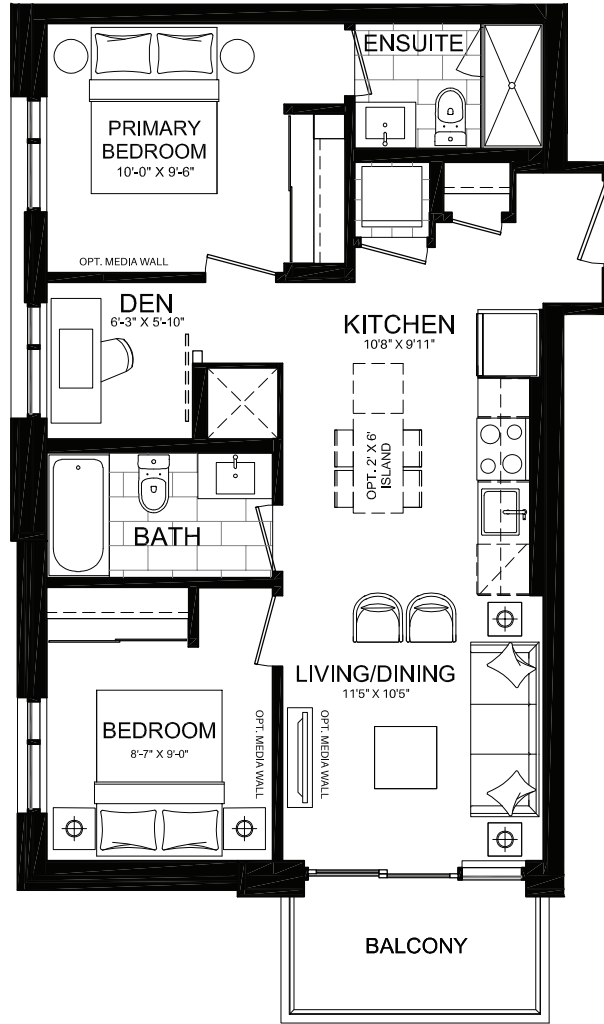
All illustrations are artist's concept. Materials, specifications, floor plans, terms and conditions are subject to change without notice. All room sizes are approximate dimensions. Actual square footage and usage floor space may vary slightly from those stated. Ceilings and walls may be modified to accommodate the mechanical and electrical systems. The unit shown may be the reverse of the unit built. E. & O.E.

2 BEDROOM – 743 SQ FT

# SUITE C3G2 | C3H2

3

Interior: 764 S.F. | Exterior: 49 S.F. | Total: 813 S.F.  
 C3G2: Floors 2-6 (9' ceilings) | C3H2: Floor 7 (10' ceilings)



2 BEDROOM + DEN - 764 SQ FT



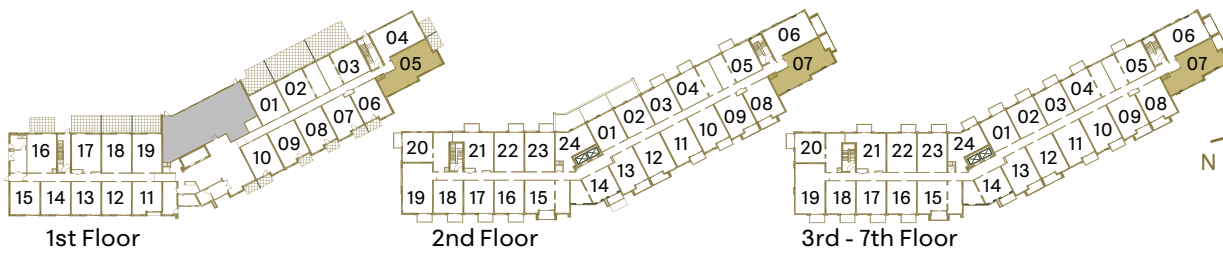
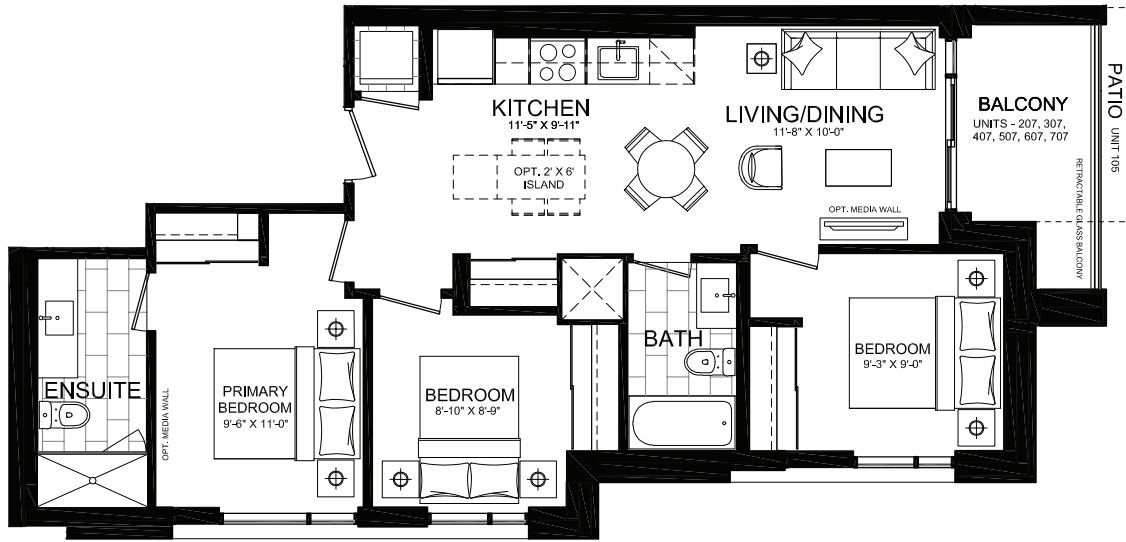
CLOCKWORK<sup>3</sup>

All illustrations are artist's concept. Materials, specifications, floor plans, terms and conditions are subject to change without notice. All room sizes are approximate dimensions. Actual square footage and usage floor space may vary slightly from those stated. Ceilings and walls may be modified to accommodate the mechanical and electrical systems. The unit shown may be the reverse of the unit built. E. & O.E.

# SUITE C3A3 | C3B3

3

Interior: 876 S.F. | Exterior: 57-80 S.F. | Total: 933-956 S.F.  
 C3A3: Floors 1 & 7 (10' ceilings) | C3B3: Floors 2-6 (9' ceilings)



CLOCKW<sup>3</sup>ORK

All illustrations are artist's concept. Materials, specifications, floor plans, terms and conditions are subject to change without notice. All room sizes are approximate dimensions. Actual square footage and usage floor space may vary slightly from those stated. Ceilings and walls may be modified to accommodate the mechanical and electrical systems. The unit shown may be the reverse of the unit built. E. & O.E.

3 BEDROOM — 876 SQ FT