



WOODEND PLACE
WOODBRIDGE

3-STOREY 20' HOME DESIGNS



PRESIDENT'S MESSAGE



Since CountryWide opened its doors in 2005, we have always prided ourselves on looking ahead, trying to anticipate the lifecycle needs of our communities and building homes people love to live in.

That is what excites our team and I at CountryWide about Woodend Place.

Every house we build, including the one you are looking at now, is built on a foundation of great people, imbued with a spirit of excellence, producing a quality product. Going above and beyond is our baseline standard.

On that foundation, we build your home using just four tools:

CAREFULLY CHOSEN LAND

We work hard to find the best locations in which to live, so the people in our communities grow successfully and happily in the lifestyle they wish to lead.

FRESH, FOCUSED AND APPEALING DESIGNS

It's not enough for us to build luxuriously, our homes – your home – must be elegant, designed for today, and stand out visually and ergonomically.

WORKMANSHIP

We take great pride in our work and we have great respect for your investment in us. That's why your home is built above provincial code standards.

SERVICE

The expectation that your needs are always met with professionalism, precision, and empathy so that your experience is service unmatched from delivery to warranty expirations and beyond.

CountryWide is renowned for creating among the finest and desirable homes in the GTA. These homes have built our reputation, and we look forward to building one especially for you.

Welcome to CountryWide's Woodend Place.

**ANGELO DE GASPERIS,
PRESIDENT COUNTRYWIDE HOMES**





WOODEND PLACE

WOODBIDGE

3-STOREY 20' TOWNS



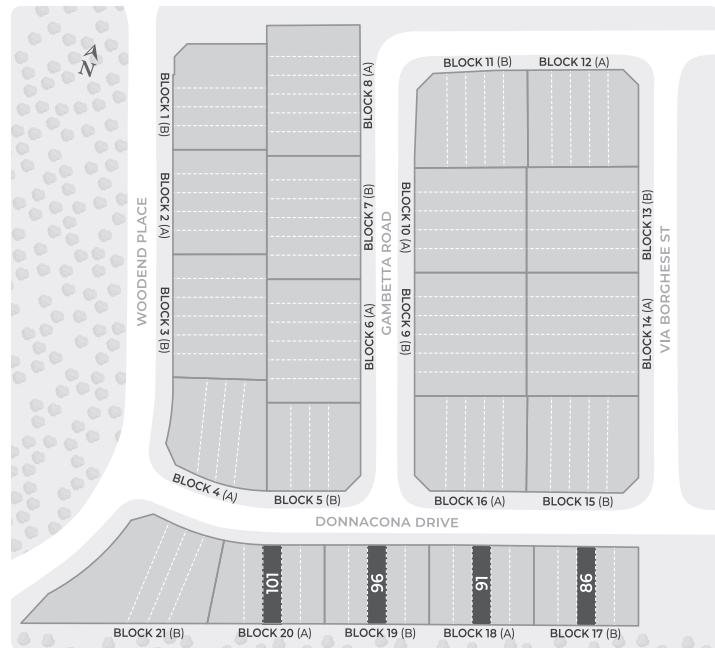
Elevation A



Elevation B

CEDAR (3TH-1)

ELEVATION A 1,983 SQ. FT. | ELEVATION B 1,983 SQ. FT.



Available on numbered lots.



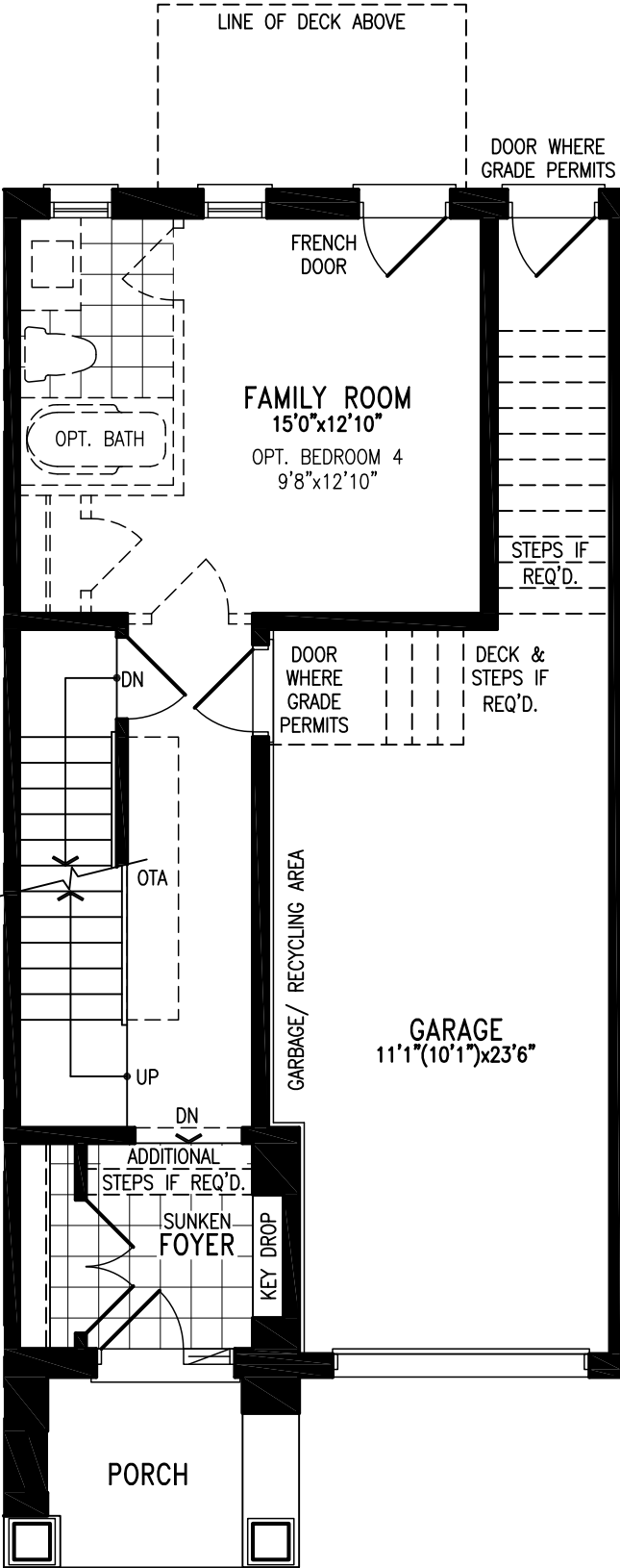
Elevation A



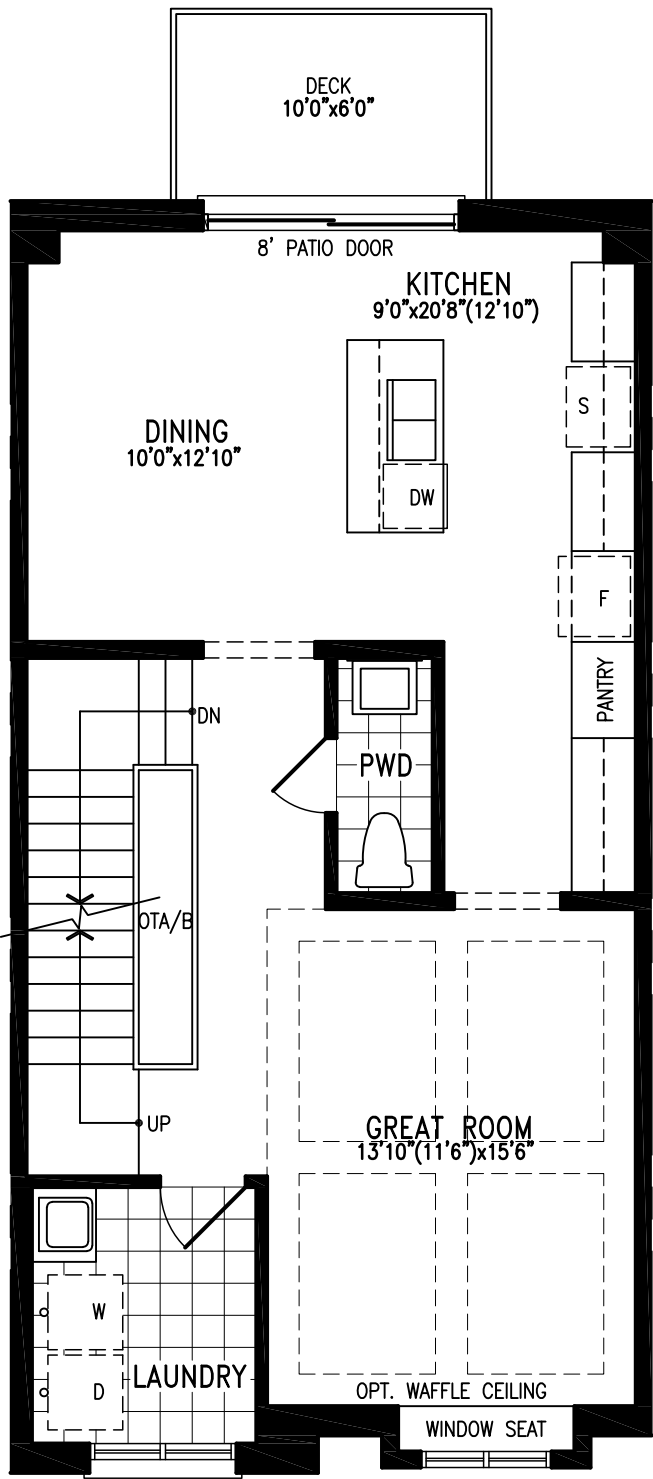
Elevation B

CEDAR (3TH-1)

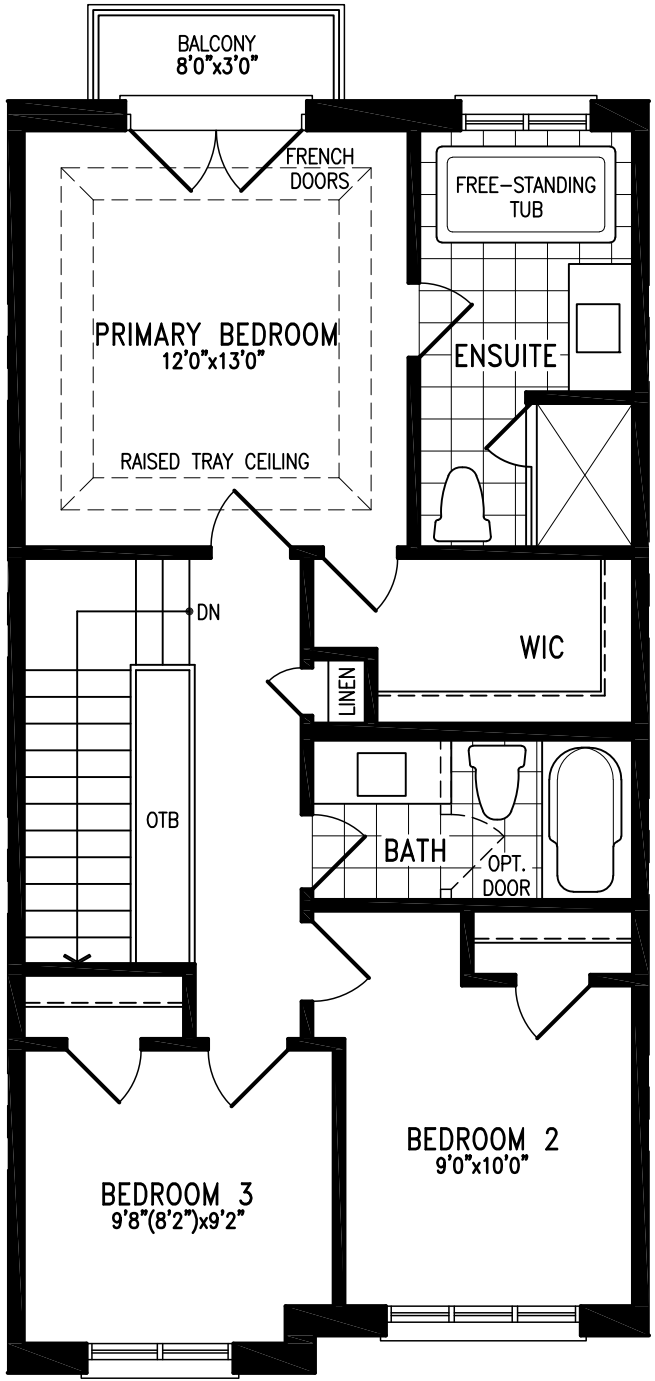
ELEVATION A 1,983 SQ. FT. | ELEVATION B 1,983 SQ. FT.



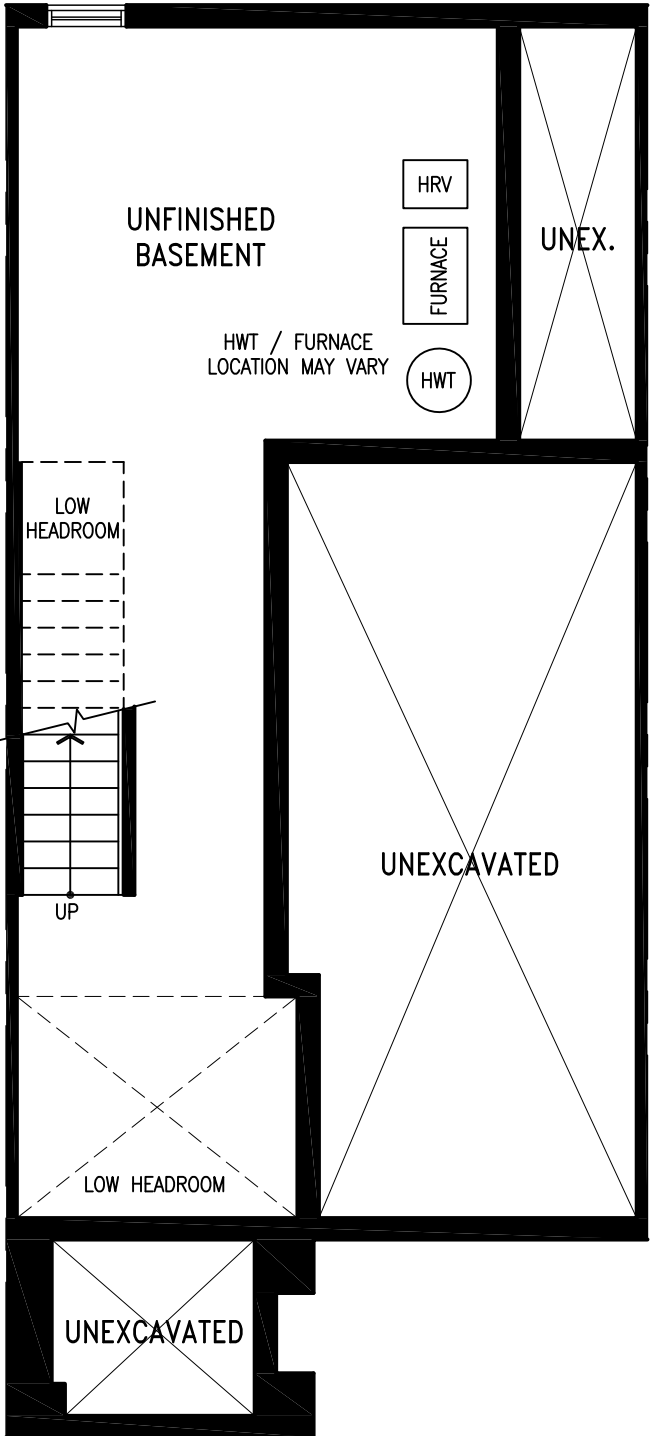
Elevation A GROUND FLOOR



Elevation A MAIN FLOOR



Elevation A UPPER FLOOR



Elevation A BASEMENT



Visit Countrywidehomes.ca to view Elevation B Floor Plans.

CEDAR WP3TH-1 The following front or rear elevation is subject to change due to the model selected such as but not limited to exterior roof pitches, exterior wall jogs, window or balcony bump outs or recessed details, exterior door and window/balcony locations, and exterior materials could vary in specific areas. Prices & specifications subject to change without notice. Useable square footage may vary from that stated herein. Artists concept only E. & O. E. © 2023 CountryWide Homes. All rights reserved.





WOODEND PLACE WOODBIDGE

3-STOREY 20' TOWNS



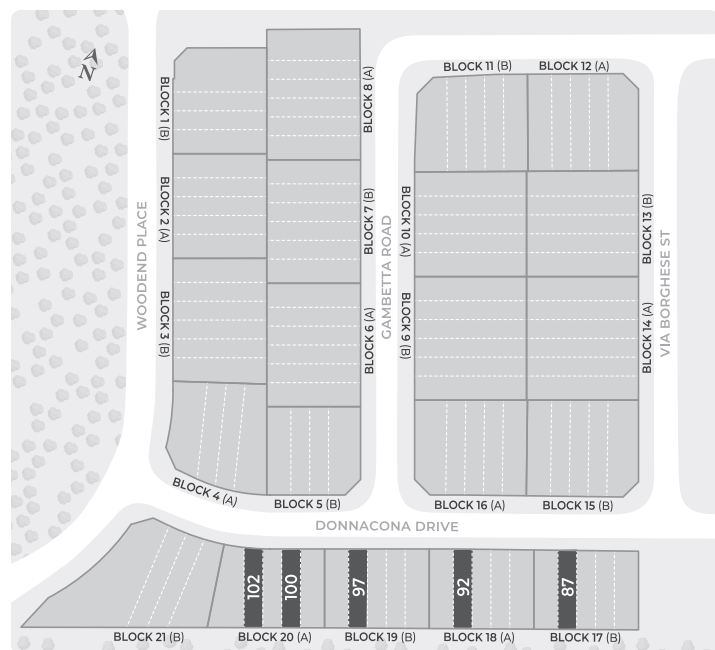
Elevation A



Elevation B

KORTRIGHT (3TH-2)

ELEVATION A 2,112 SQ. FT. | ELEVATION B 2,112 SQ. FT.



Available on numbered lots.



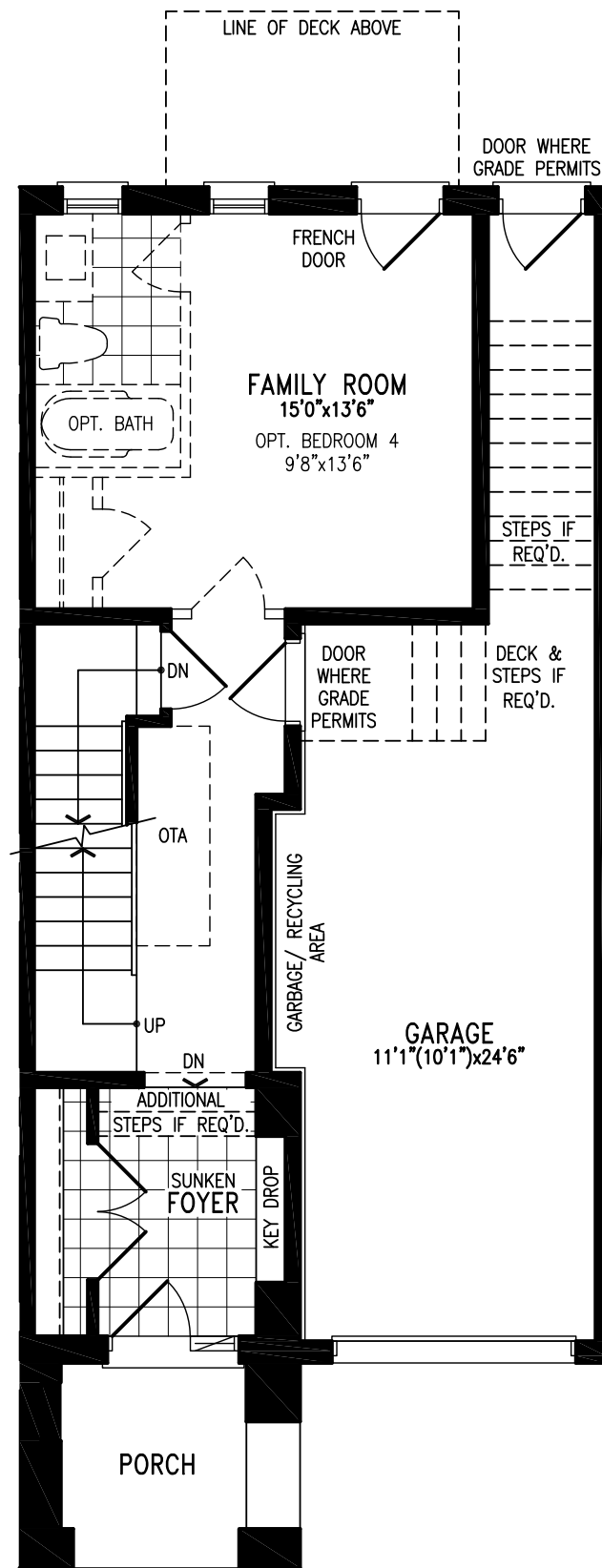
Elevation A



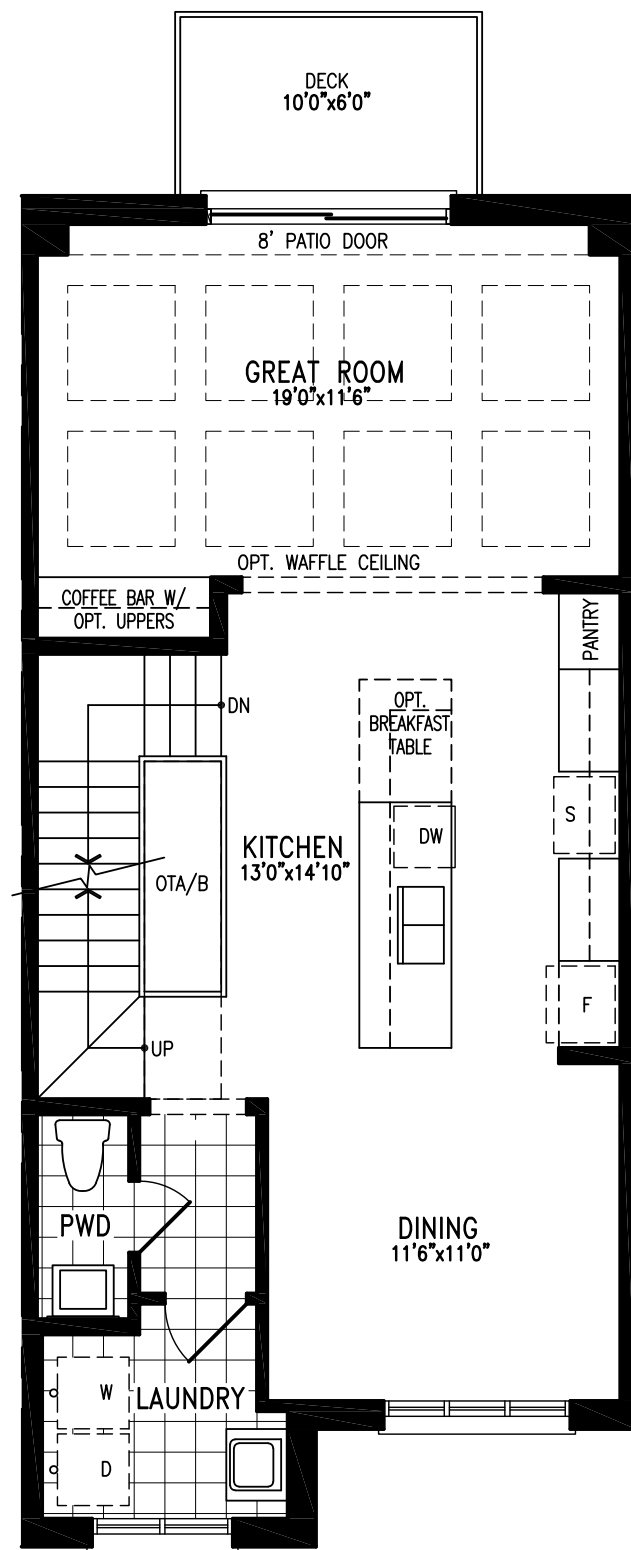
Elevation B

KORTRIGHT (3TH-2)

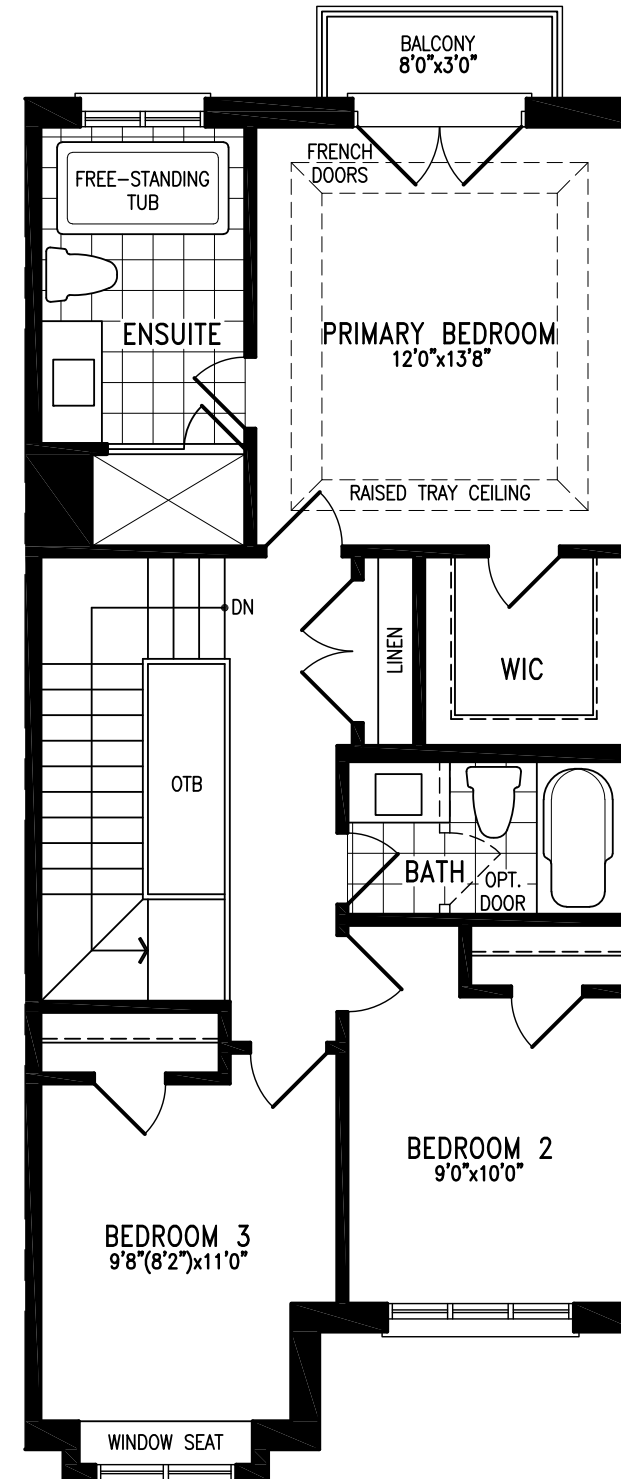
ELEVATION A 2,112 SQ. FT. | ELEVATION B 2,112 SQ. FT.



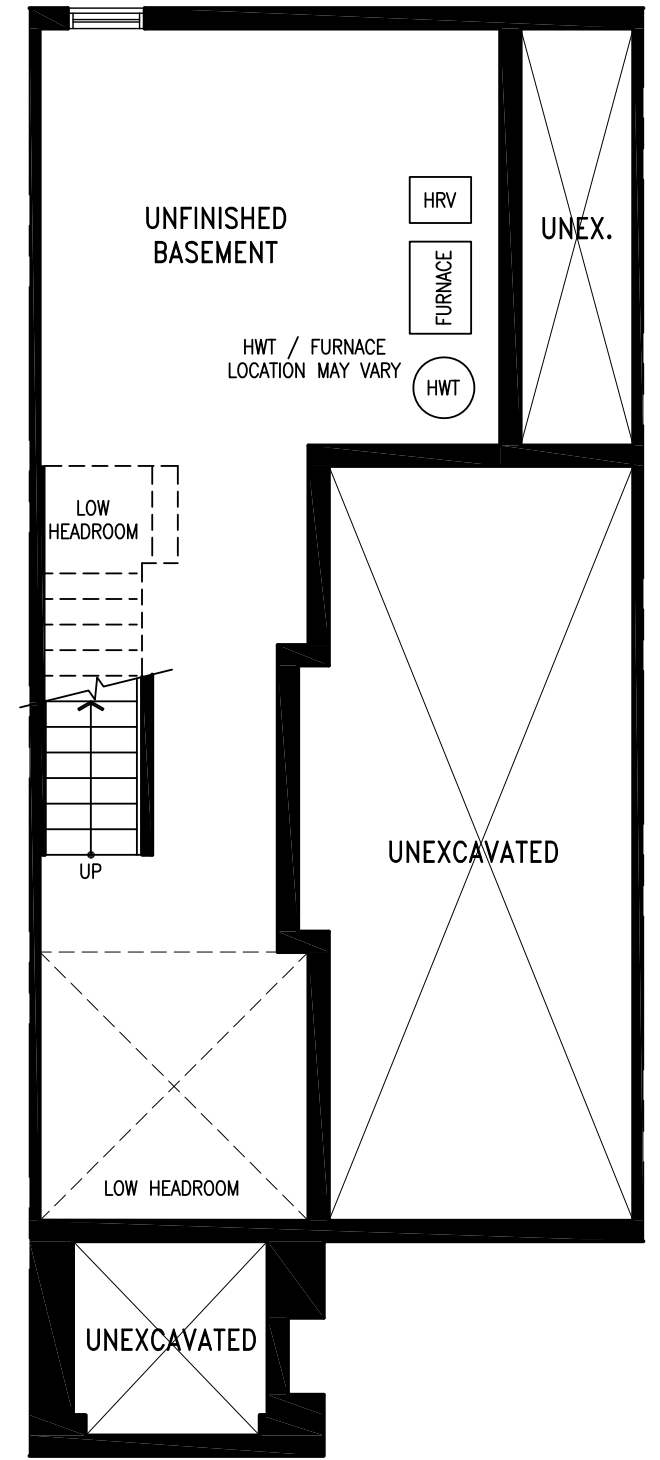
Elevation A
GROUND FLOOR



Elevation A
MAIN FLOOR



Elevation A
UPPER FLOOR



Elevation A
BASEMENT



Visit [Countrywidehomes.ca](https://www.countrywidehomes.ca) to view Elevation B Floor Plans.

KORTRIGHT WP3TH-2 The following front or rear elevation is subject to change due to the model selected such as but not limited to exterior roof pitches, exterior wall jogs, window or balcony bump outs or recessed details, exterior door and window/balcony locations, and exterior materials could vary in specific areas. Prices & specifications subject to change without notice. Useable square footage may vary from that stated herein. Artists concept only E. & O. E. © 2023 CountryWide Homes. All rights reserved.





WOODEND PLACE

WOODBIDGE

3-STOREY 20' TOWNS



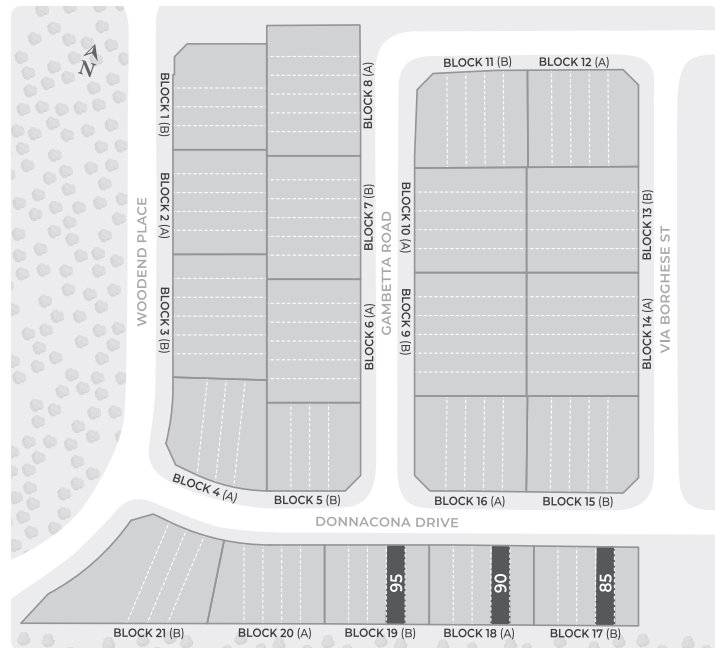
Elevation A



Elevation B

HILTON (3TH-3)

ELEVATION A 2,275 SQ. FT. | ELEVATION B 2,283 SQ. FT.



Available on numbered lots.



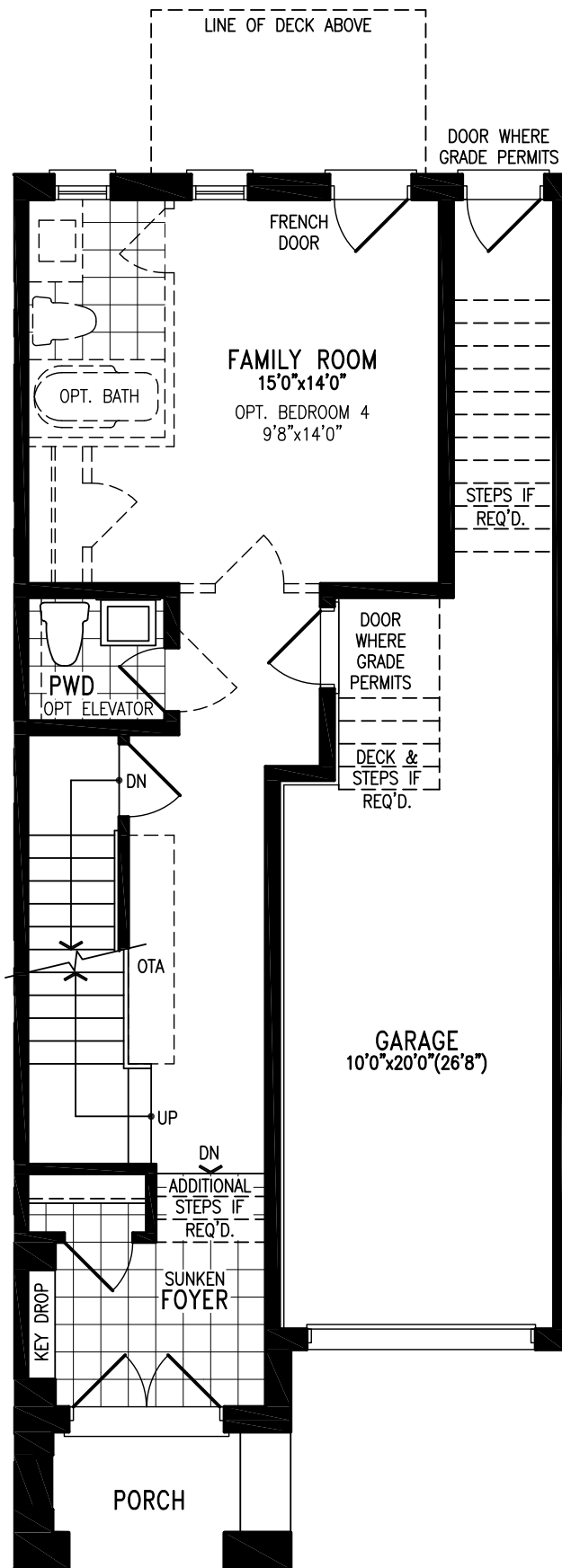
Elevation A



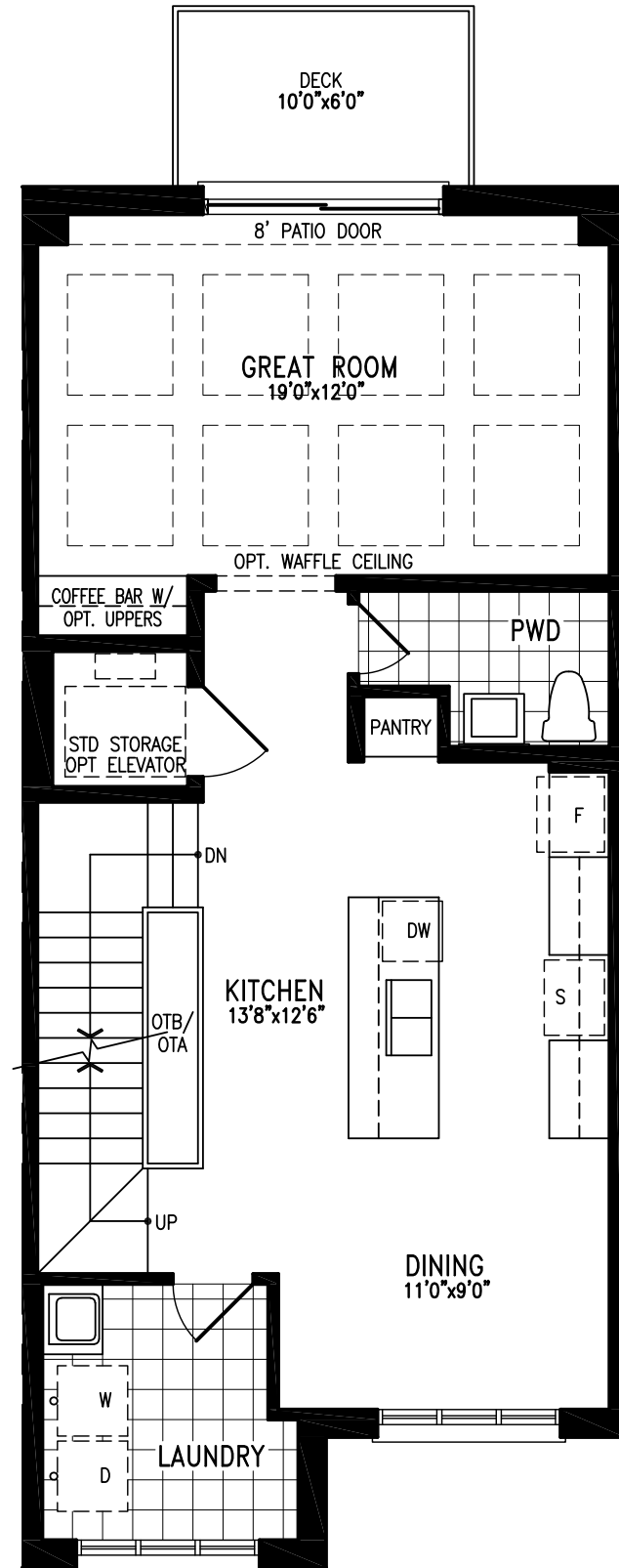
Elevation B

HILTON (3TH-3)

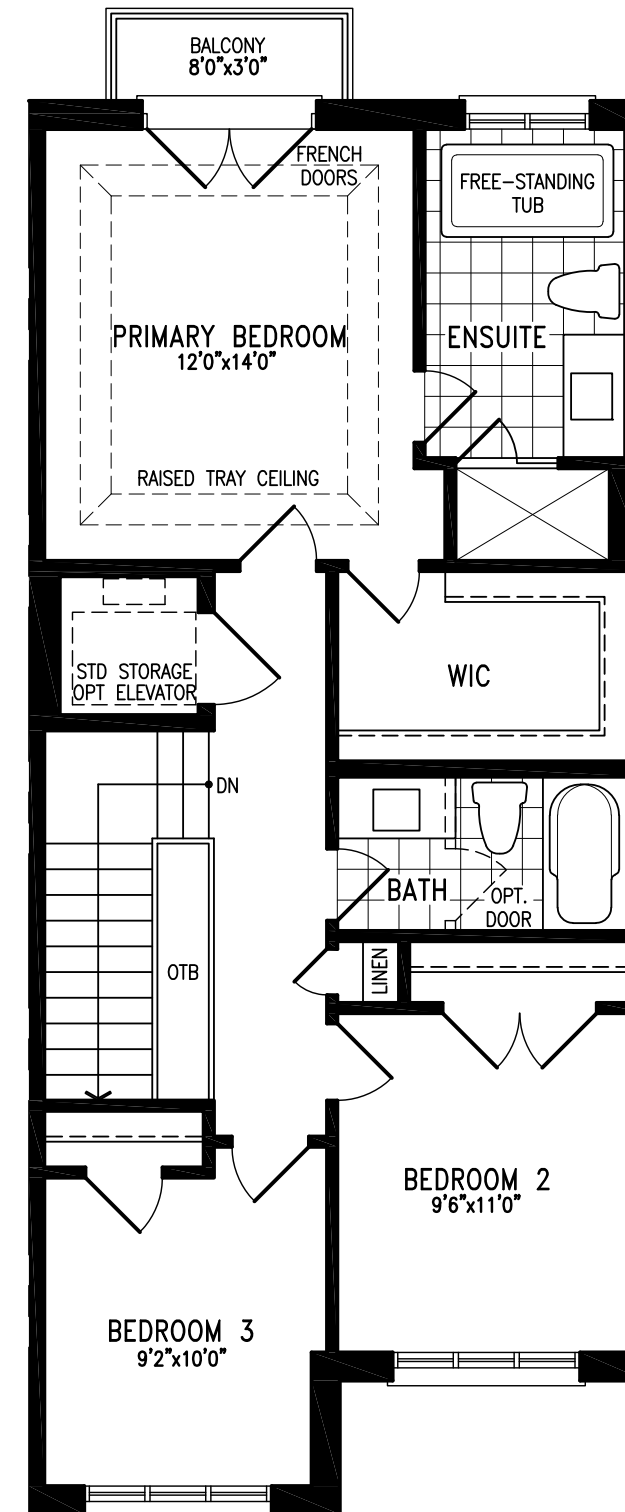
ELEVATION A 2,275 SQ. FT. | ELEVATION B 2,283 SQ. FT.



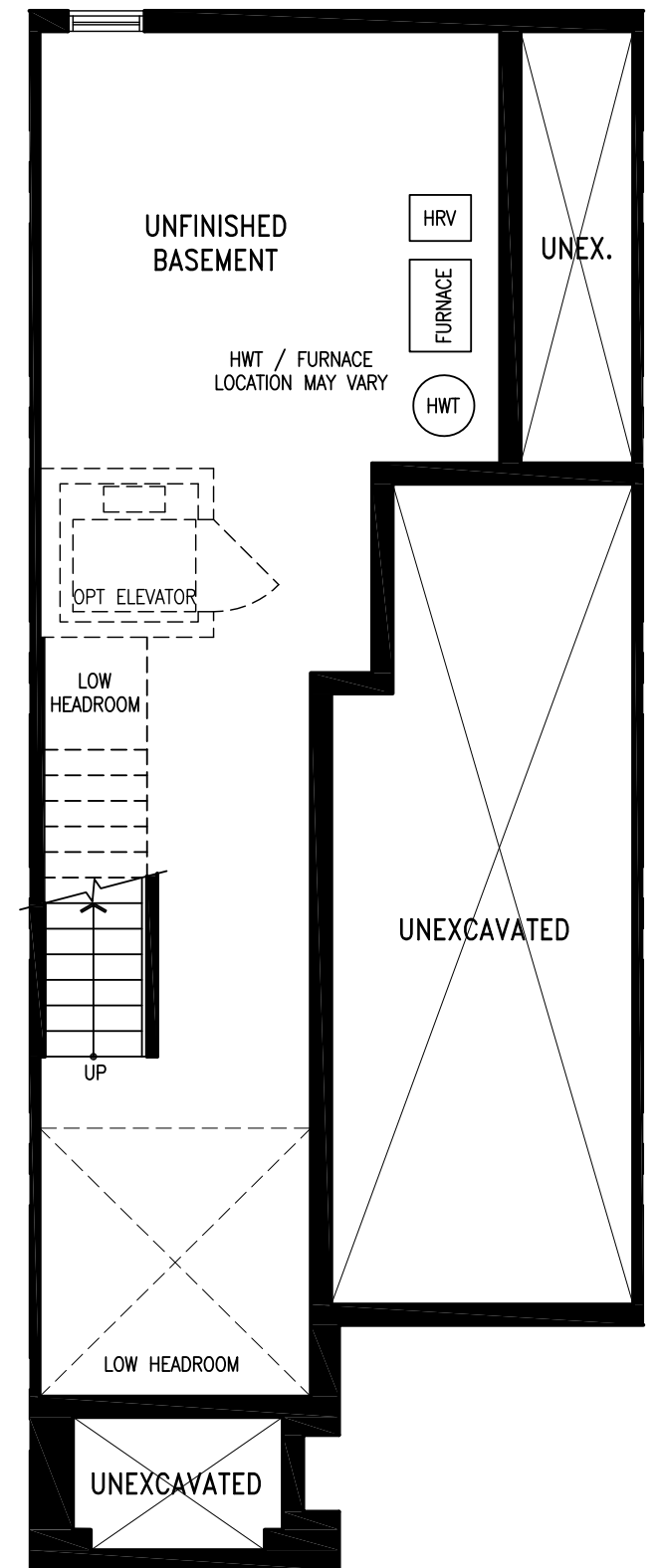
Elevation A
GROUND FLOOR



Elevation A
MAIN FLOOR



Elevation A
UPPER FLOOR



Elevation A
BASEMENT



Visit [Countrywidehomes.ca](https://www.countrywidehomes.ca) to view Elevation B Floor Plans.

HILTON WP3TH-3 The following front or rear elevation is subject to change due to the model selected such as but not limited to exterior roof pitches, exterior wall jogs, window or balcony bump outs or recessed details, exterior door and window/balcony locations, and exterior materials could vary in specific areas. Prices & specifications subject to change without notice. Useable square footage may vary from that stated herein. Artists concept only E. & O. E. © 2023 CountryWide Homes. All rights reserved.





WOODEND PLACE
WOODBIDGE

3-STOREY 20' TOWNS



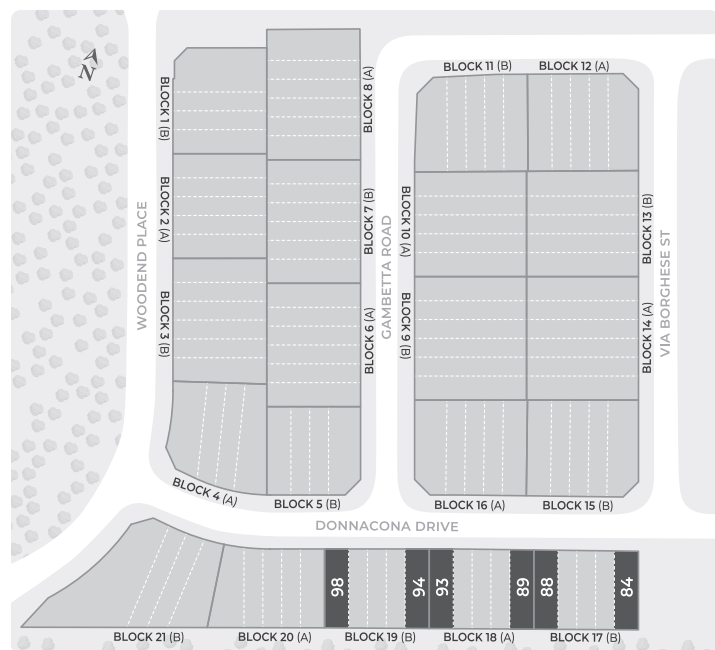
Elevation A



Elevation B

ROCKWOOD (END) (3TH-4E)

ELEVATION A 2,534 SQ. FT. | ELEVATION B 2,527 SQ. FT.



Available on numbered lots.



Elevation A

Elevation A

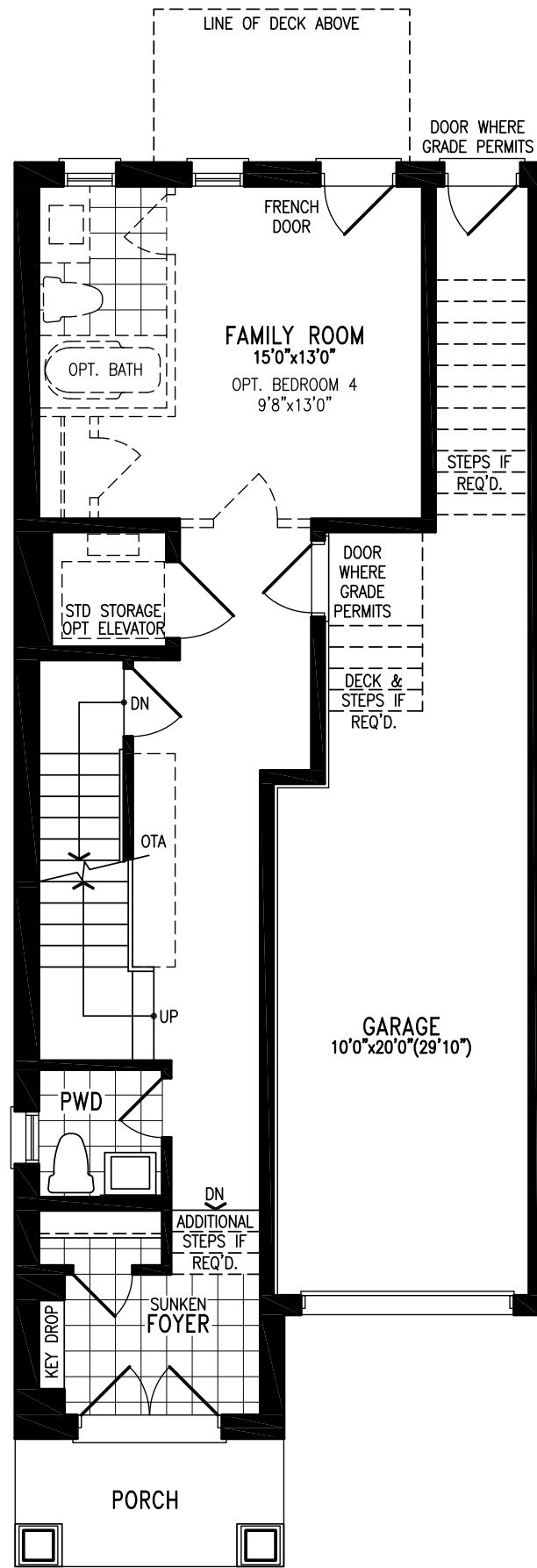


Elevation B

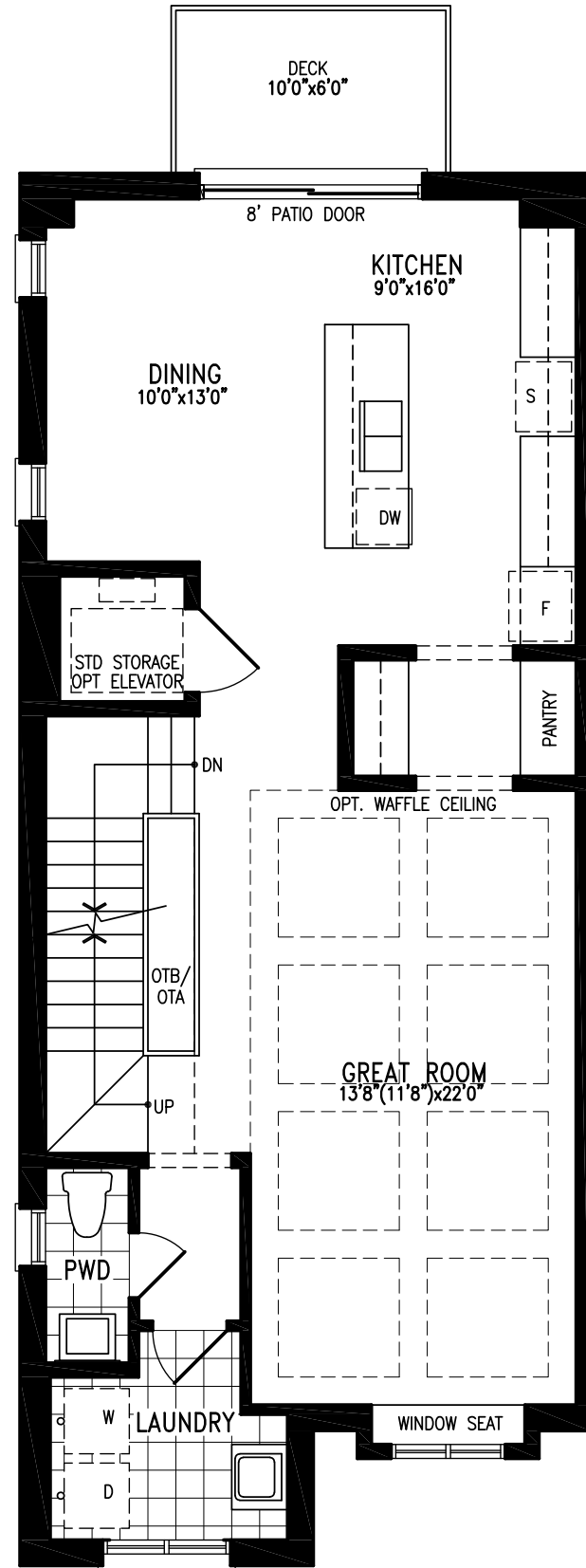
Elevation B

ROCKWOOD (END) (3TH-4E)

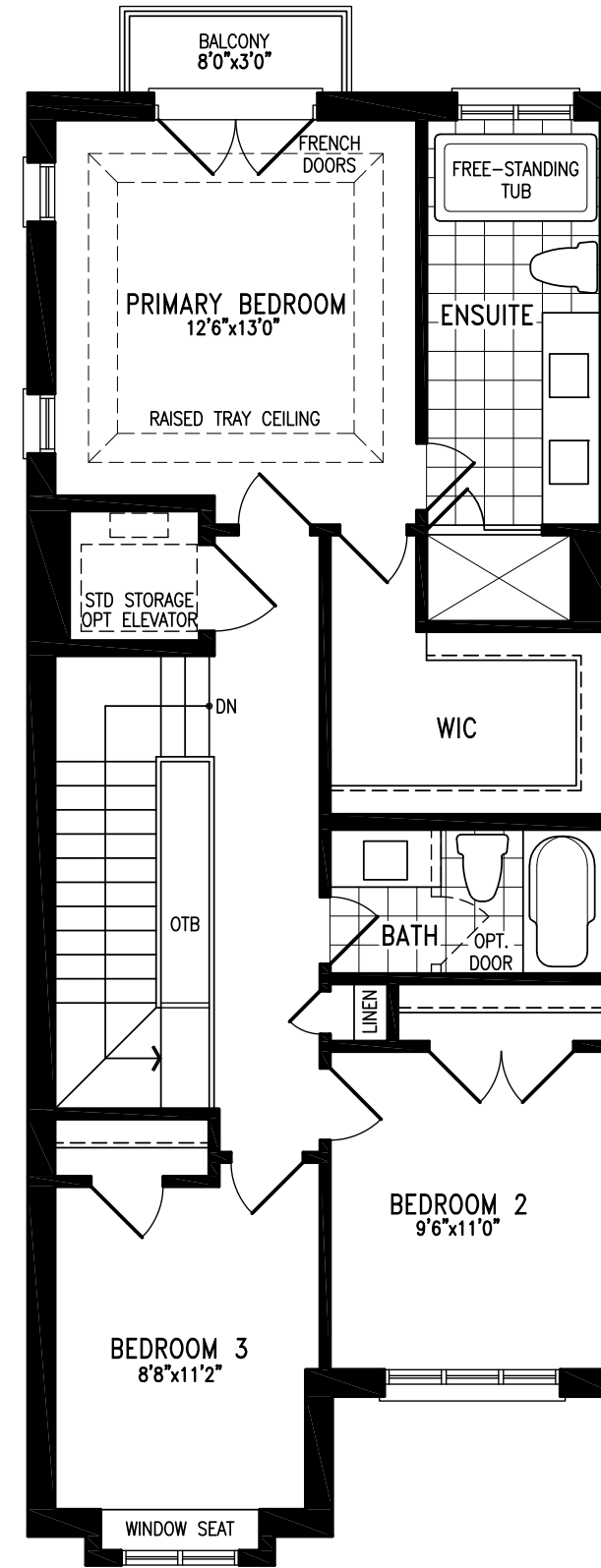
ELEVATION A 2,534 SQ. FT. | ELEVATION B 2,527 SQ. FT.



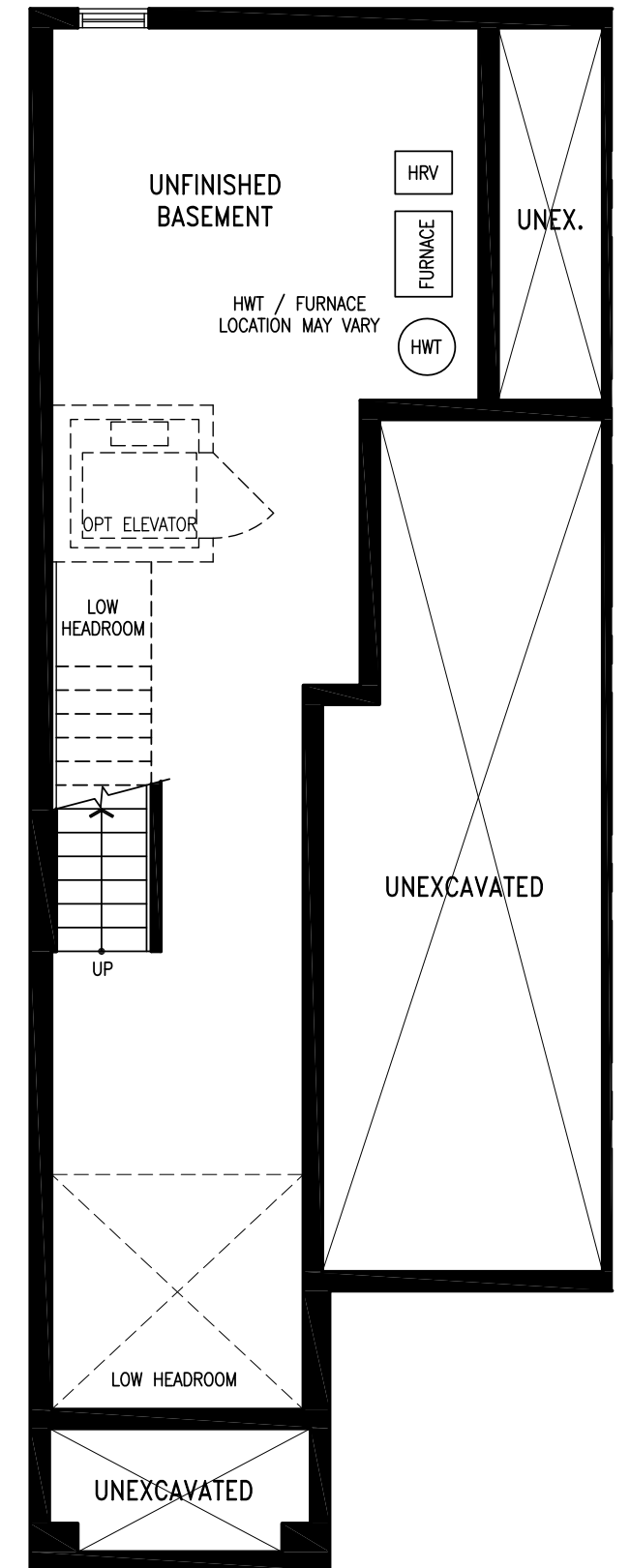
Elevation A
GROUND FLOOR



Elevation A
MAIN FLOOR



Elevation A
UPPER FLOOR



Elevation A
BASEMENT

Visit [Countrywidehomes.ca](https://www.countrywidehomes.ca) to view Elevation B Floor Plans.

ROCKWOOD (END) WP3TH-4E The following front or rear elevation is subject to change due to the model selected such as but not limited to exterior roof pitches, exterior wall jogs, window or balcony bump outs or recessed details, exterior door and window/balcony locations, and exterior materials could vary in specific areas. Prices & specifications subject to change without notice. Useable square footage may vary from that stated herein. Artists concept only E. & O. E. © 2023 CountryWide Homes. All rights reserved.





EXCELLENCE

We pride ourselves on delivering excellence and building relationships with our customers that last as long as our homes.

INSPIRE

At CountryWide, our vision is to create distinctive homes and communities that inspire everyone to pursue the Canadian Dream.





CountryWide is dedicated to building and doing business to a higher standard. This means striving to add innovative and beautiful designs to our portfolio, pioneering new ways to develop homes, and building trust with each and every one of our customers through premium homes and communities. The right attitude, the right level of service and the perfect approach enables CountryWide Homes to deliver on **A New Level.**



