

Lake Wilcox Towns

PRICE LIST

MODEL	TYPE	SIZE	STARTING PRICE
THE CEDAR	TH-1	1,746 Sq.ft.	\$1,469,990
THE SPRUCE	TH-1 (COR.)	1,885 Sq.ft.	\$1,559,990
THE MAPLE	TH-1 (CS)	1,893 Sq.ft.	\$1,559,990
THE BLUEBEARD LILY	TH-2	1,930 Sq.ft.	\$1,589,990
THE WATER LILY	TH-2 (END)	1,976 Sq.ft.	\$1,689,990

POTL FEE: \$169/Month

DEPOSIT STRUCTURE

\$20,000 upon signing
 \$30,000 in 30 days
 \$30,000 in 60 days
 \$20,000 in 120 days
 \$20,000 in 150 days
 \$20,000 in 180 days
 \$20,000 in 240 days
 \$20,000 in 366 days

BANKDRAFT PAYABLE

KEYSER MASON BALL, LLP, IN TRUST

TENTATIVE OCCUPANCY

March 2025

CONTACT US

Centralpark Homes



* Prices include applicable HST. All prices, figures, promotions, features, specifications, and materials are preliminary, as per plan and are subject to change without notice. Actual usable floor space may vary from the stated floor area. Other promotional offers do not apply. Extras noted above are as per plan and as specified by Vendor. Some restrictions may apply. Extras to be chosen at Centralpark Homes. Please see the Sales Representative for details. E.&O.E. October 15th, 2023

Lake
Wilcox
Towns

CLIENT INCENTIVES

S.S Kitchen Appliances Included

Free Assignment* (Legal Fee Applies)

Development Charges Capped at \$10,000

\$5,000 Décor Dollars

Smooth Ceiling Throughout Home

Air Conditioning Included

EV rough-in In The Garage

Engineered Hardwood Floor On The Main Floor

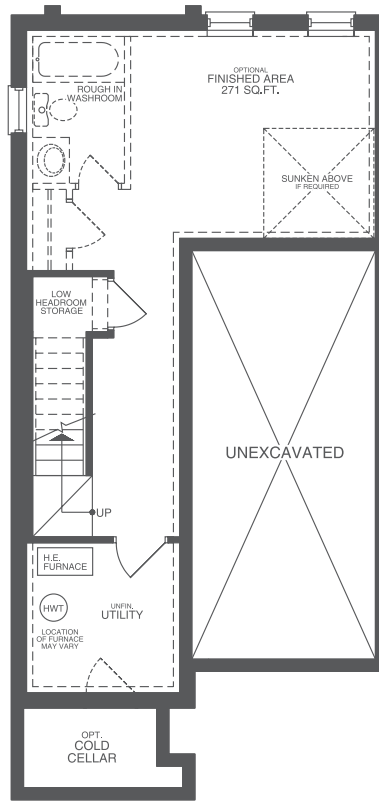
Quartz countertops Throughout Home

Master ensuite Frameless glass shower door

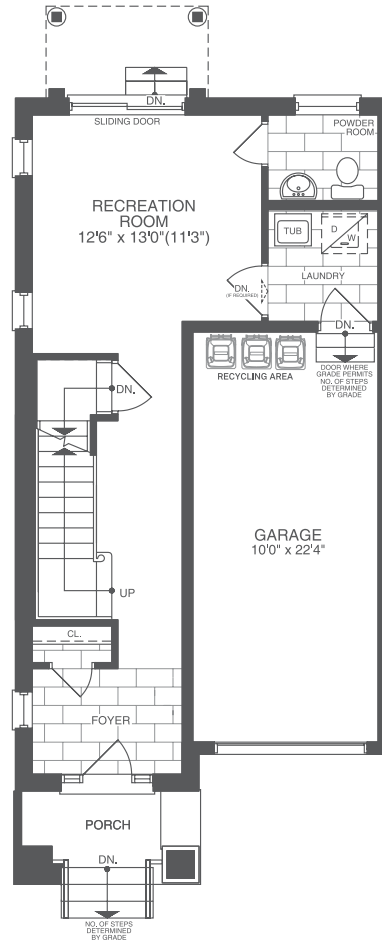
Centralpark Homes



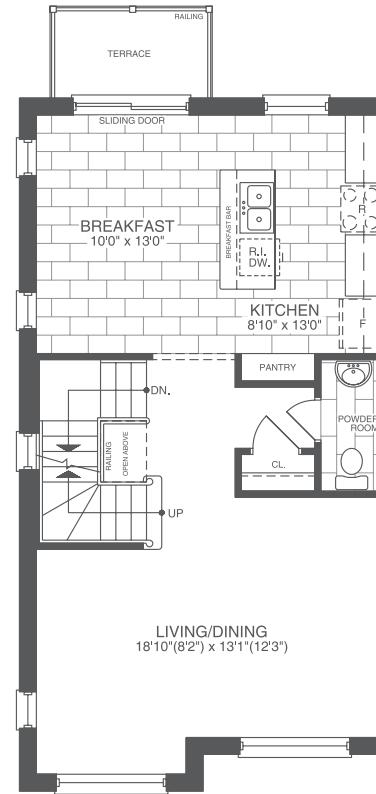
*For complete details of the offers please see sales office representative. All prices, incentives, figures and materials are preliminary and are subject to change without notice. Cannot be combined with any other incentives or programs. Special Limited Offer and may be withdrawn at any time without notice. E.&O.E. October, 2023.



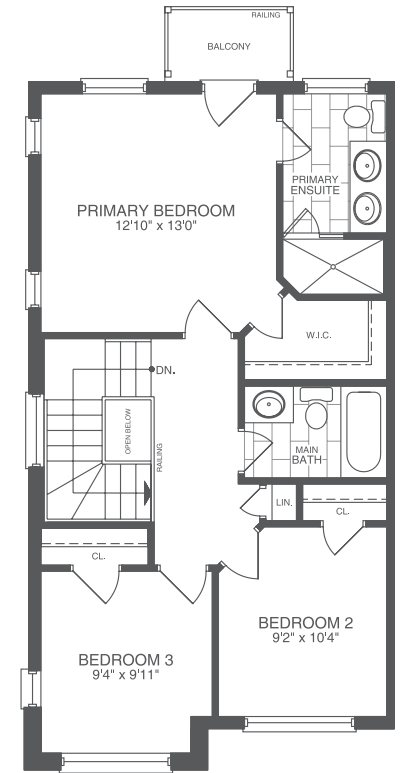
BASEMENT



FIRST FLOOR



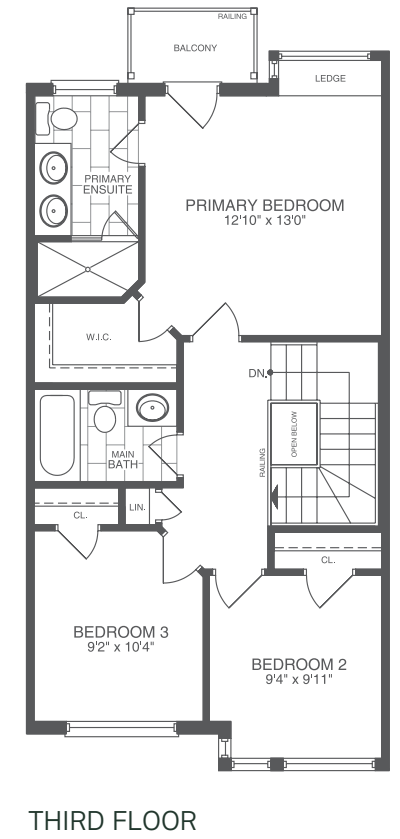
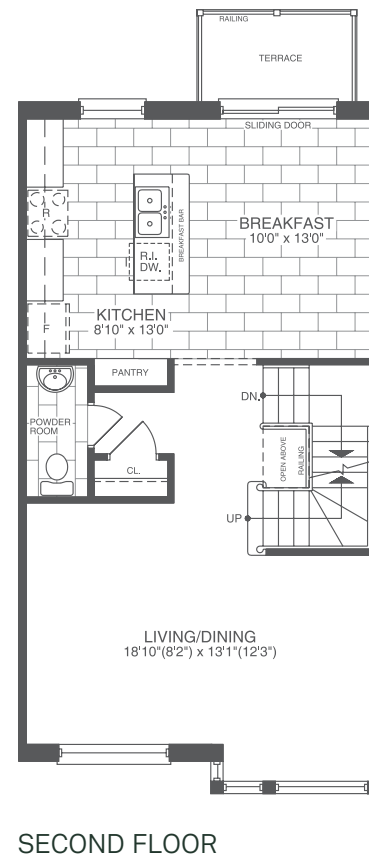
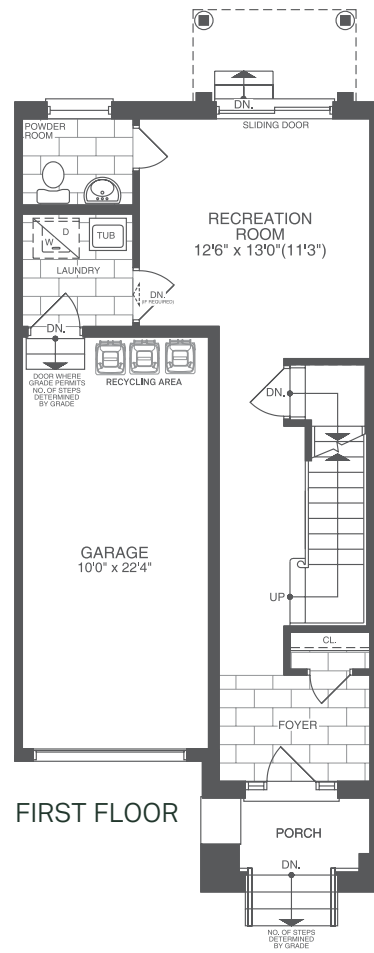
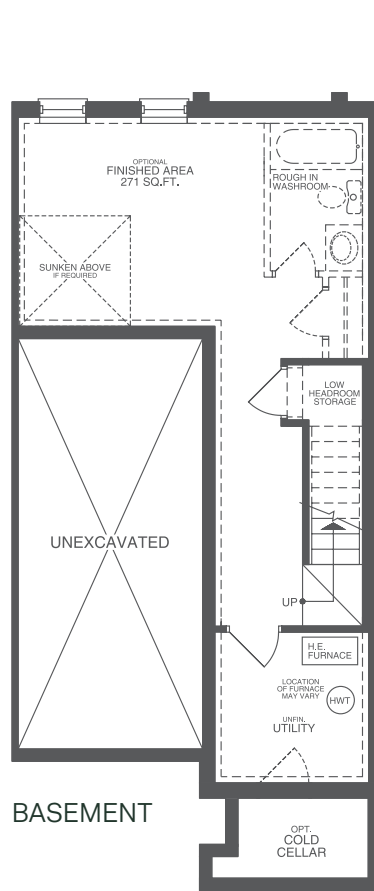
SECOND FLOOR



THIRD FLOOR

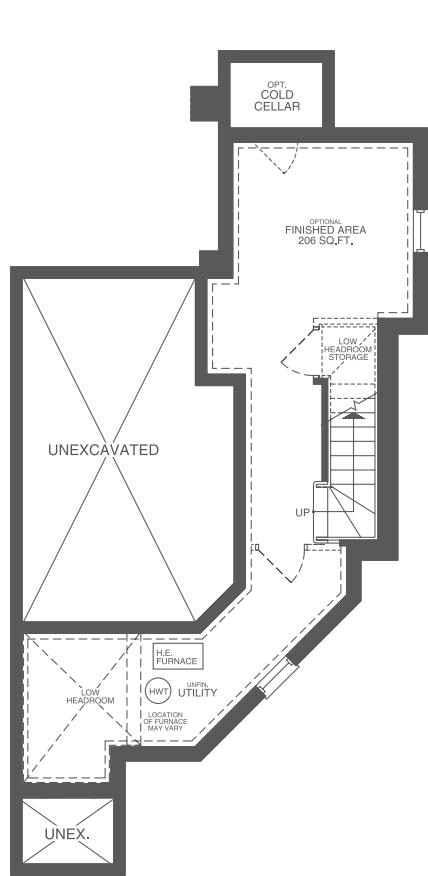
Lake Wilcox
TOWNS

1976 sq.ft.
TH-2 (END UNIT)

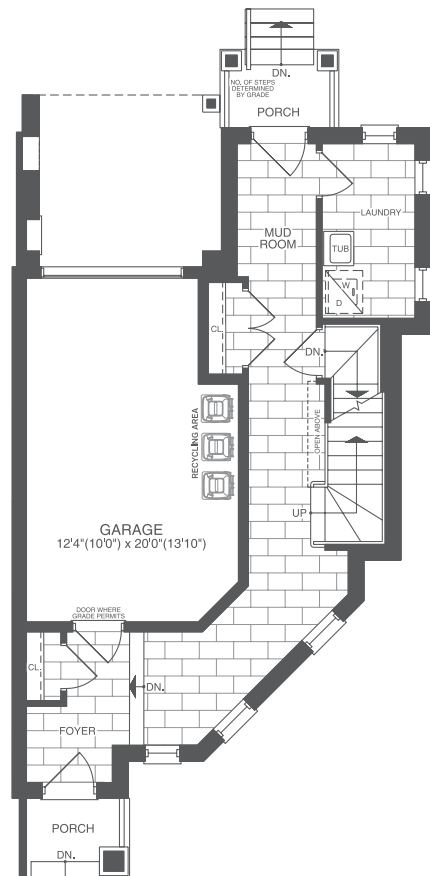


Lake Wilcox
TOWNS

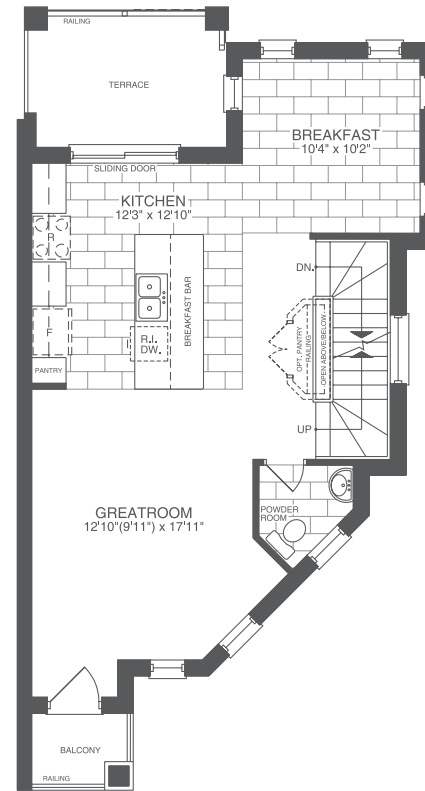
1930 sq.ft.
TH-2 (INTERIOR UNIT)



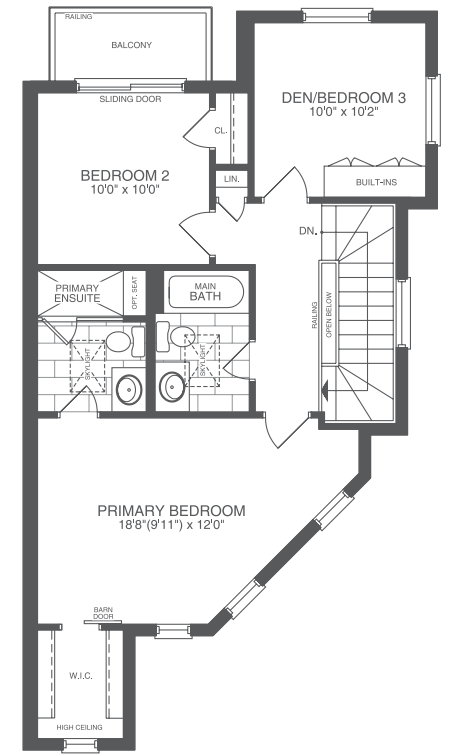
BASEMENT



FIRST FLOOR



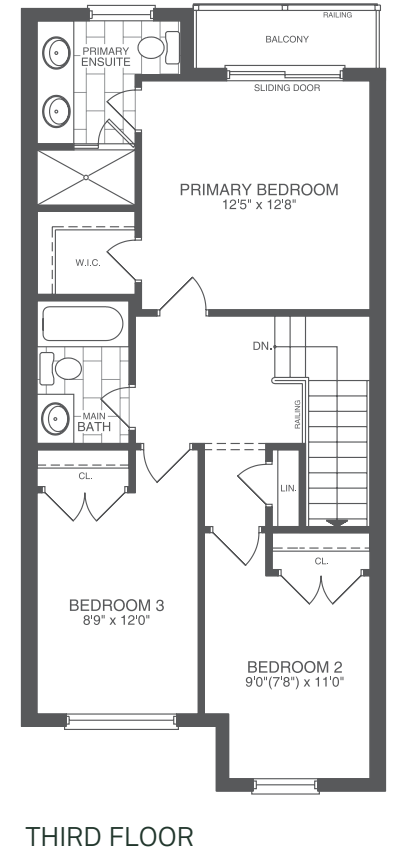
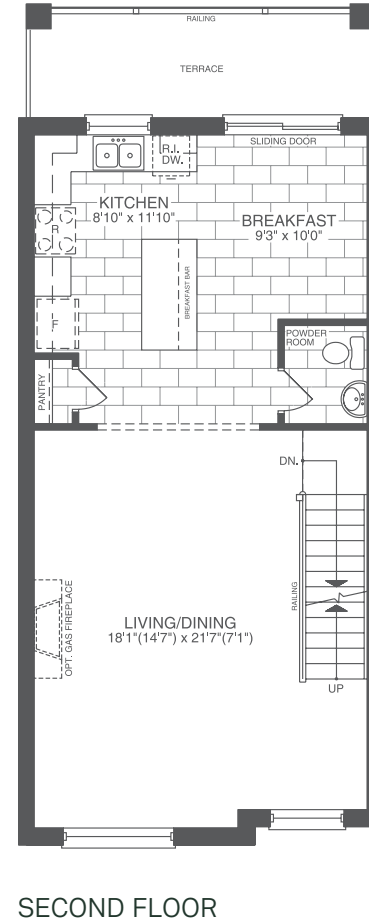
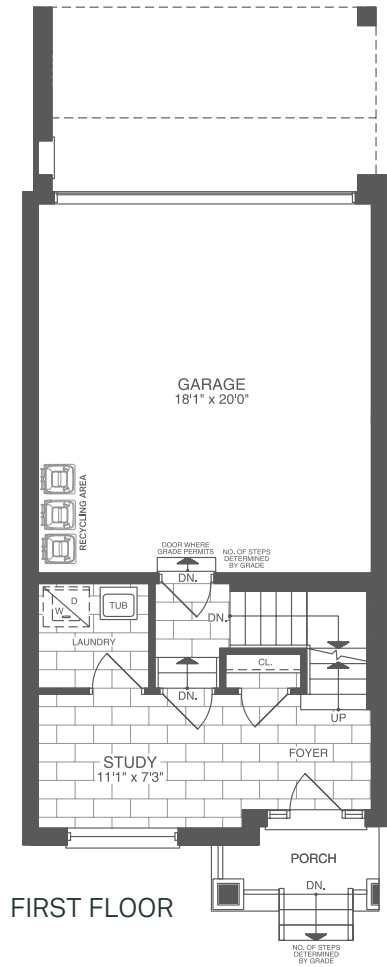
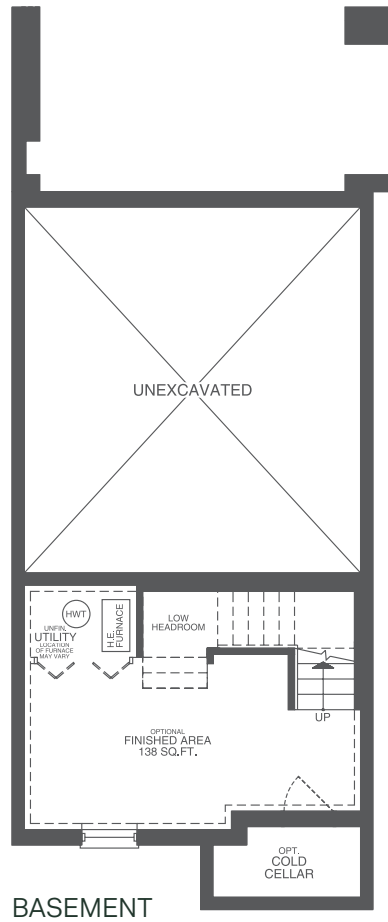
SECOND FLOOR



THIRD FLOOR

Lake Wilcox
TOWNS

1893 sq.ft.
TH-1CS (CORNER UNIT)



Lake Wilcox
TOWNS

1746 sq.ft.
TH-1 (INTERIOR UNIT)