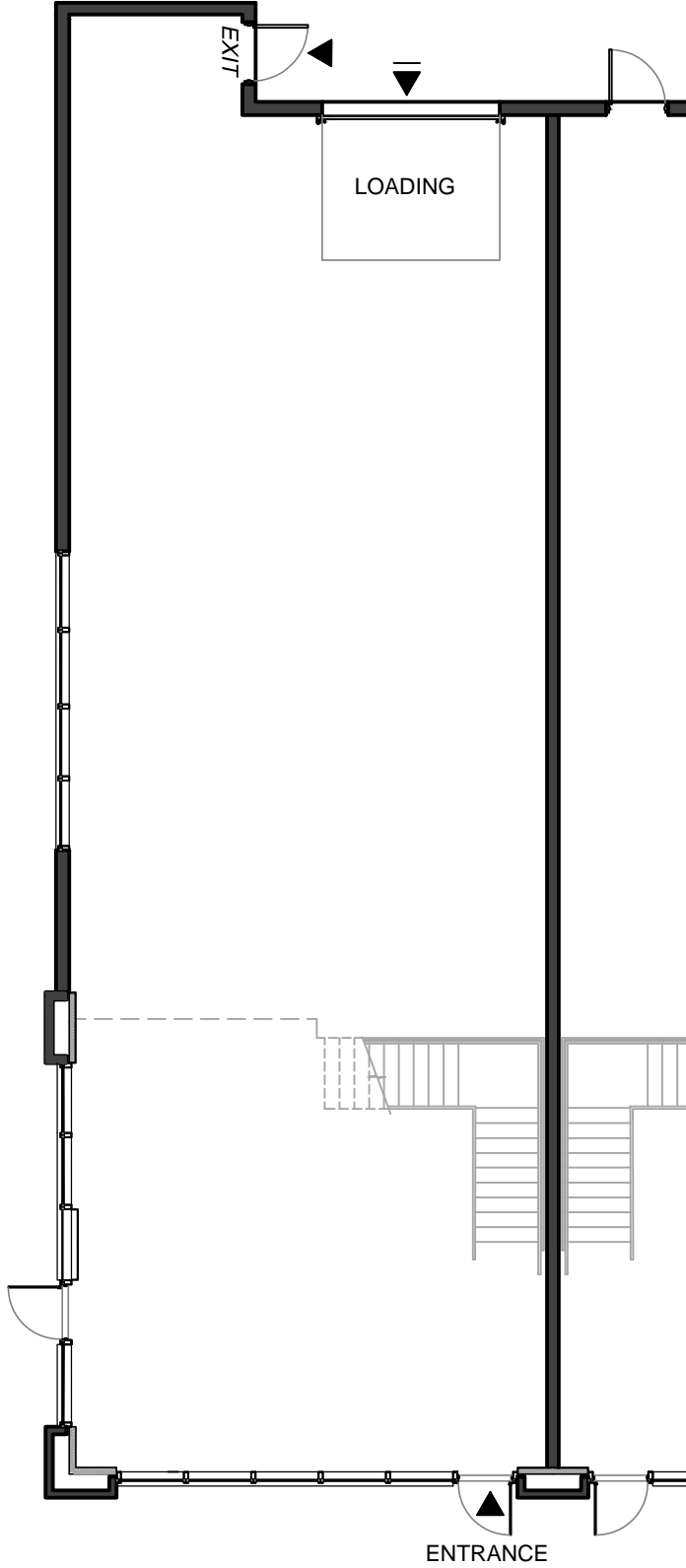
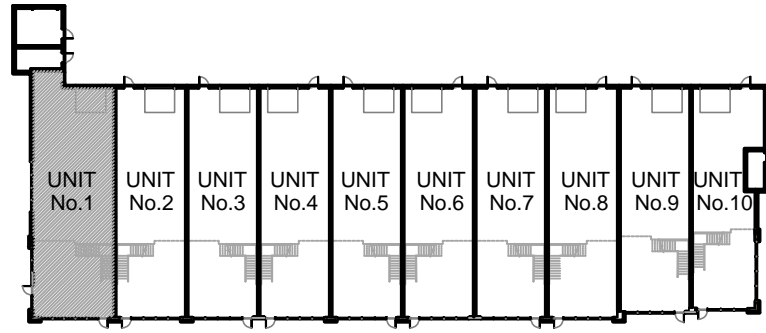
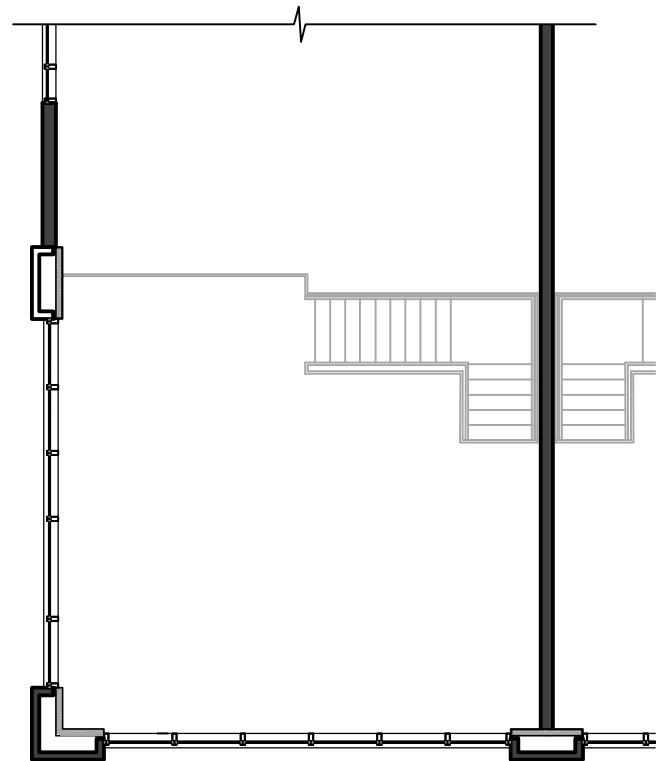


195 MOSTAR ST., WHITCHURCH-STOUFFVILLE, ON
 BUILDING 'A', UNIT No.1



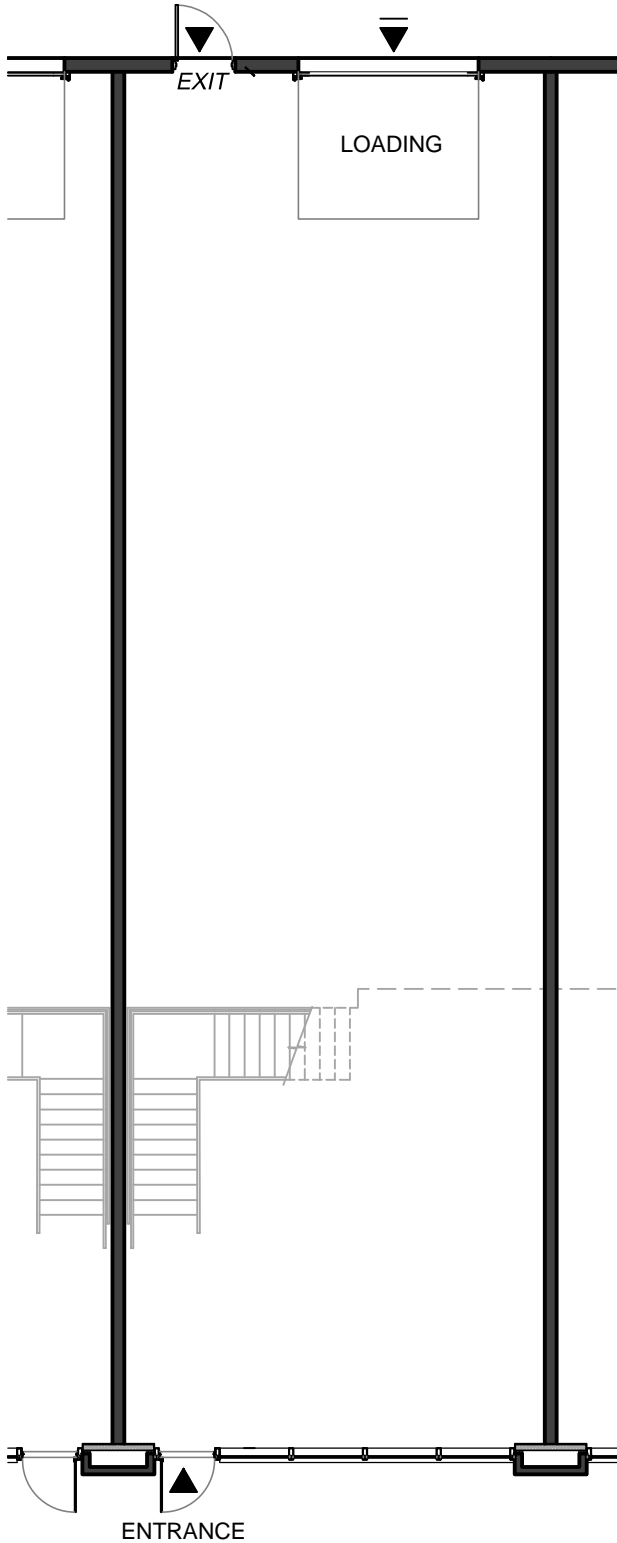
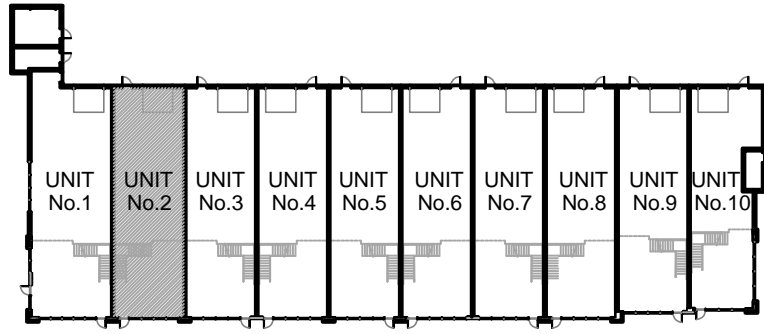
GROUND FLOOR PLAN



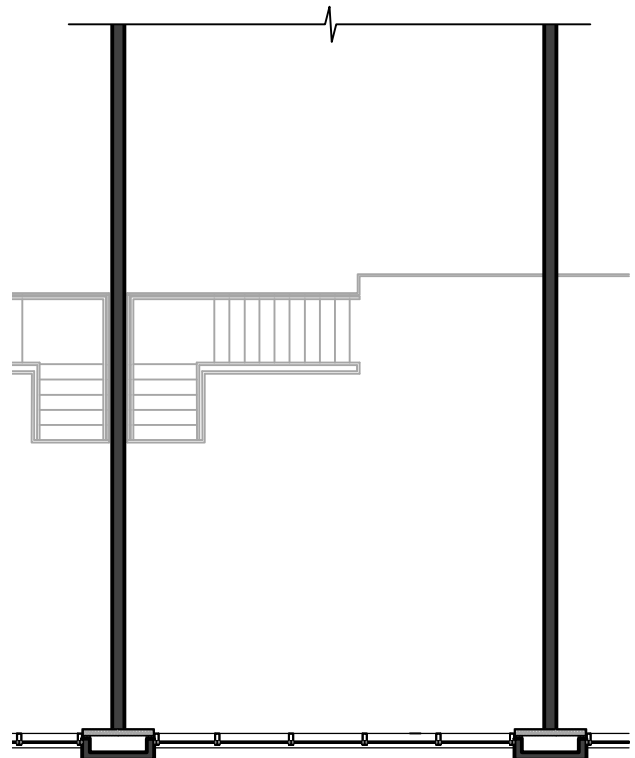
MEZZANINE LEVEL PLAN

GROSS UNIT AREA		
GROUND FLOOR	MEZZANINE	TOTAL
2,239.40 SF / 208.05 SM	637.13 SF / 59.19 SM	2,876.53 SF / 267.24 SM

195 MOSTAR ST., WHITCHURCH-STOUFFVILLE, ON
 BUILDING 'A', UNIT No.2



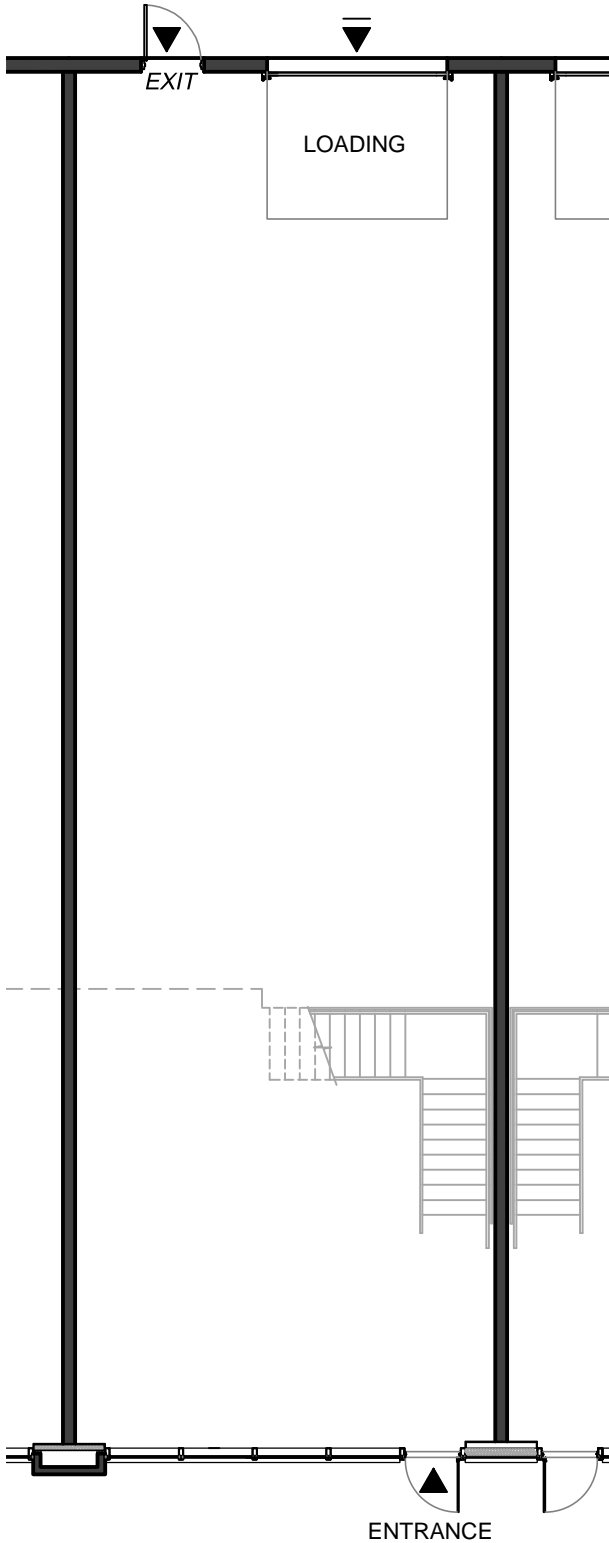
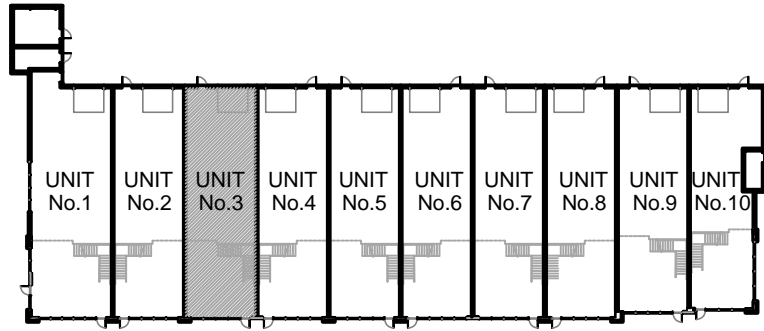
GROUND FLOOR PLAN



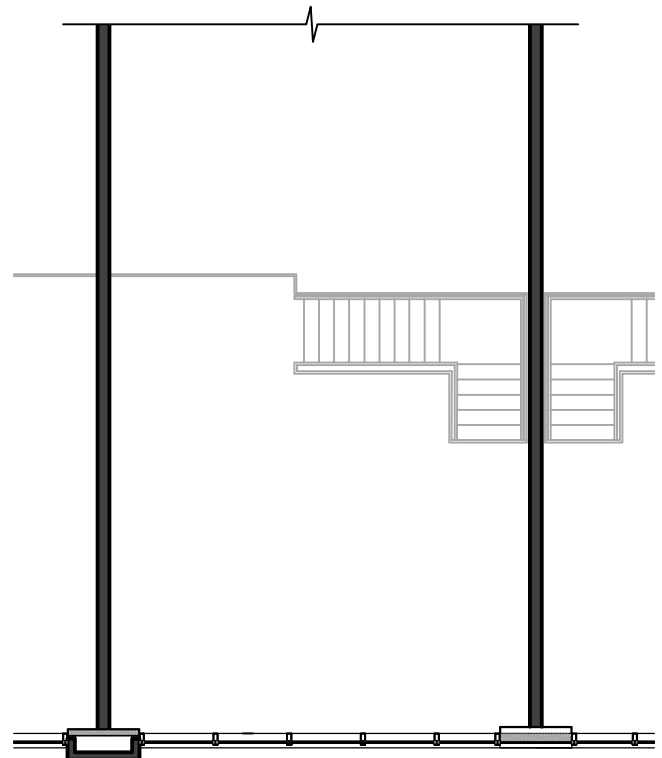
MEZZANINE LEVEL PLAN

GROSS UNIT AREA		
GROUND FLOOR	MEZZANINE	TOTAL
1,873.50 SF / 174.05 SM	531.87 SF / 49.41 SM	2,405.37 SF / 223.46 SM

195 MOSTAR ST., WHITCHURCH-STOUFFVILLE, ON
 BUILDING 'A', UNIT No.3



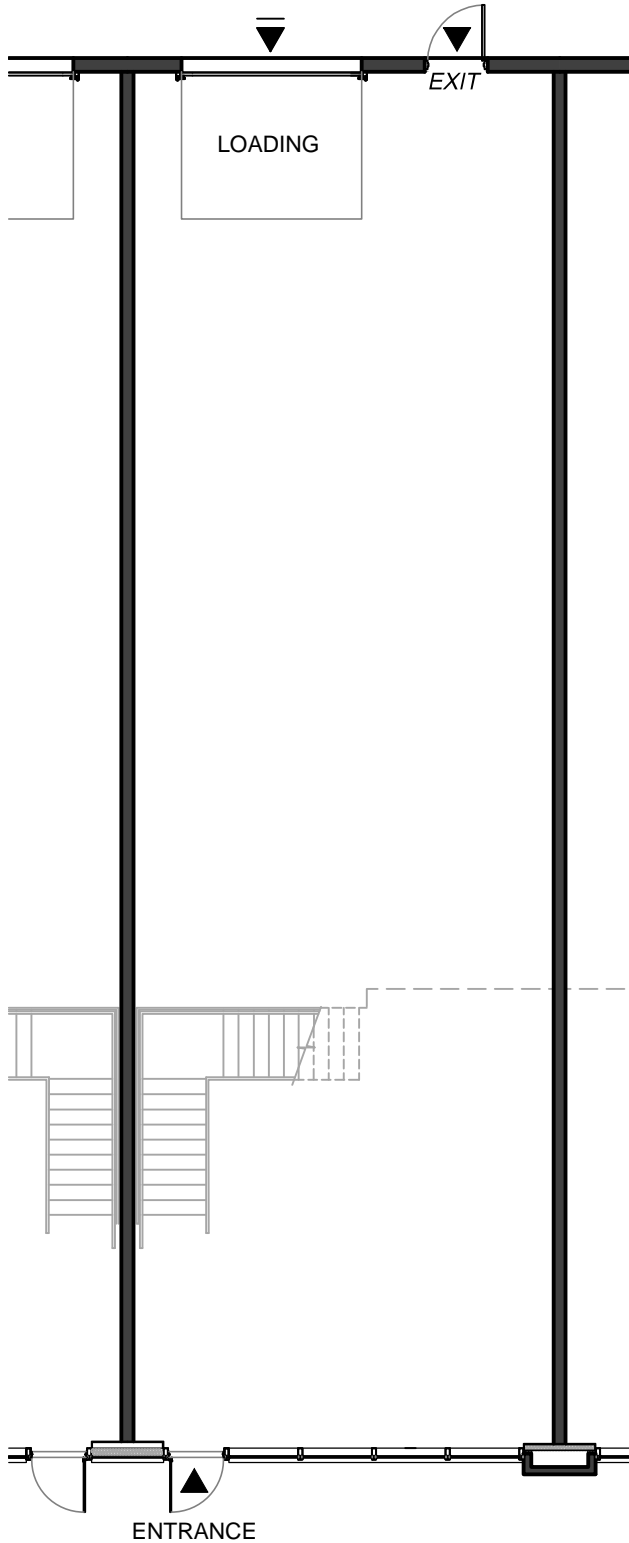
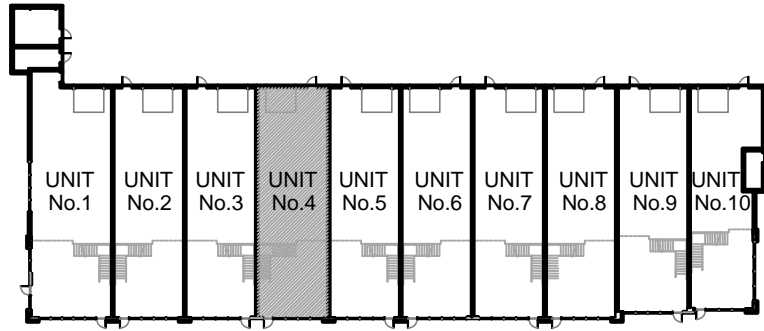
GROUND FLOOR PLAN



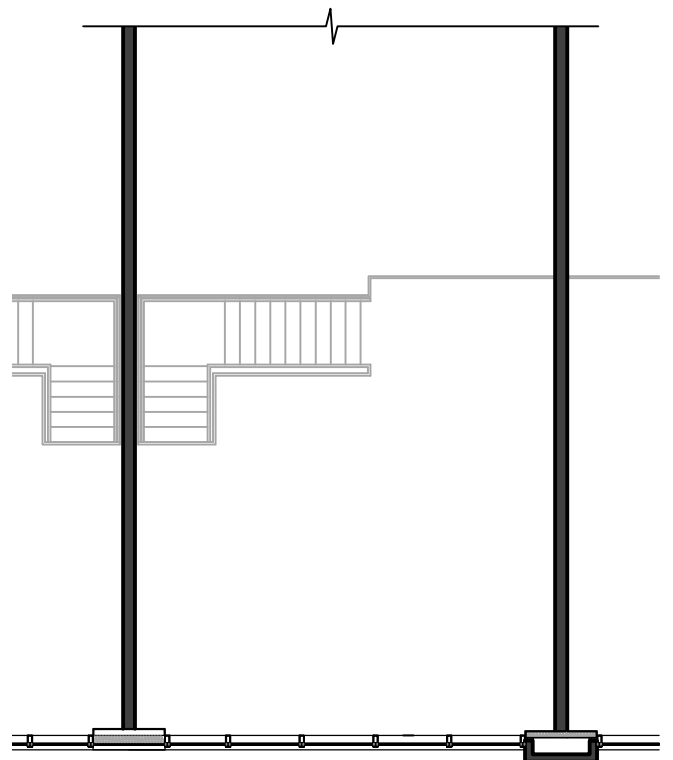
MEZZANINE LEVEL PLAN

GROSS UNIT AREA		
GROUND FLOOR	MEZZANINE	TOTAL
1,873.50 SF / 174.05 SM	531.87 SF / 49.41 SM	2,405.37 SF / 223.46 SM

195 MOSTAR ST., WHITCHURCH-STOUFFVILLE, ON
 BUILDING 'A', UNIT No.4



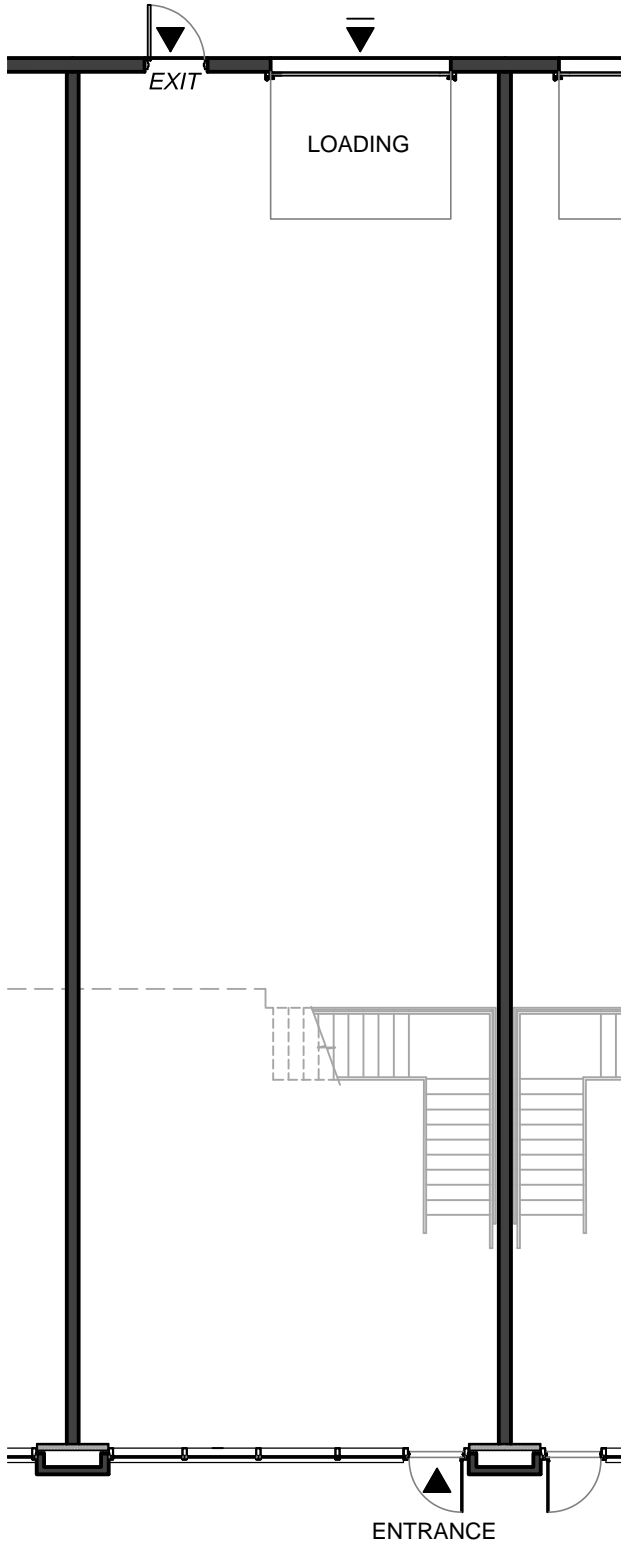
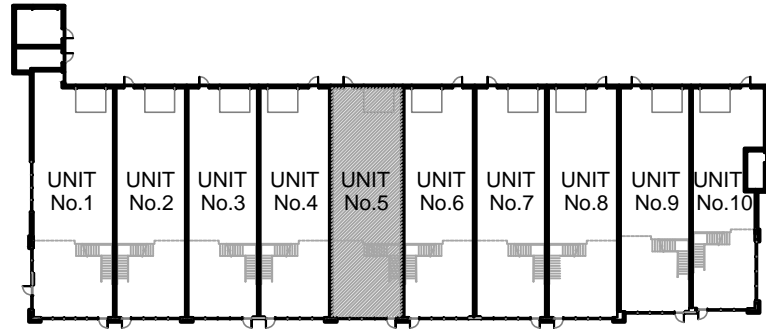
GROUND FLOOR PLAN



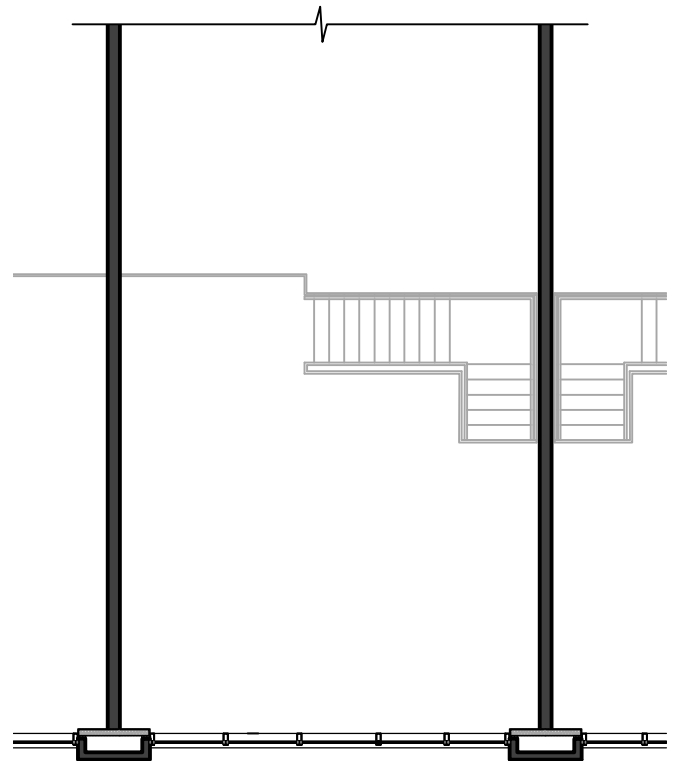
MEZZANINE LEVEL PLAN

GROSS UNIT AREA		
GROUND FLOOR	MEZZANINE	TOTAL
1,873.50 SF / 174.05 SM	531.87 SF / 49.41 SM	2,405.37 SF / 223.46 SM

195 MOSTAR ST., WHITCHURCH-STOUFFVILLE, ON
 BUILDING 'A', UNIT No.5



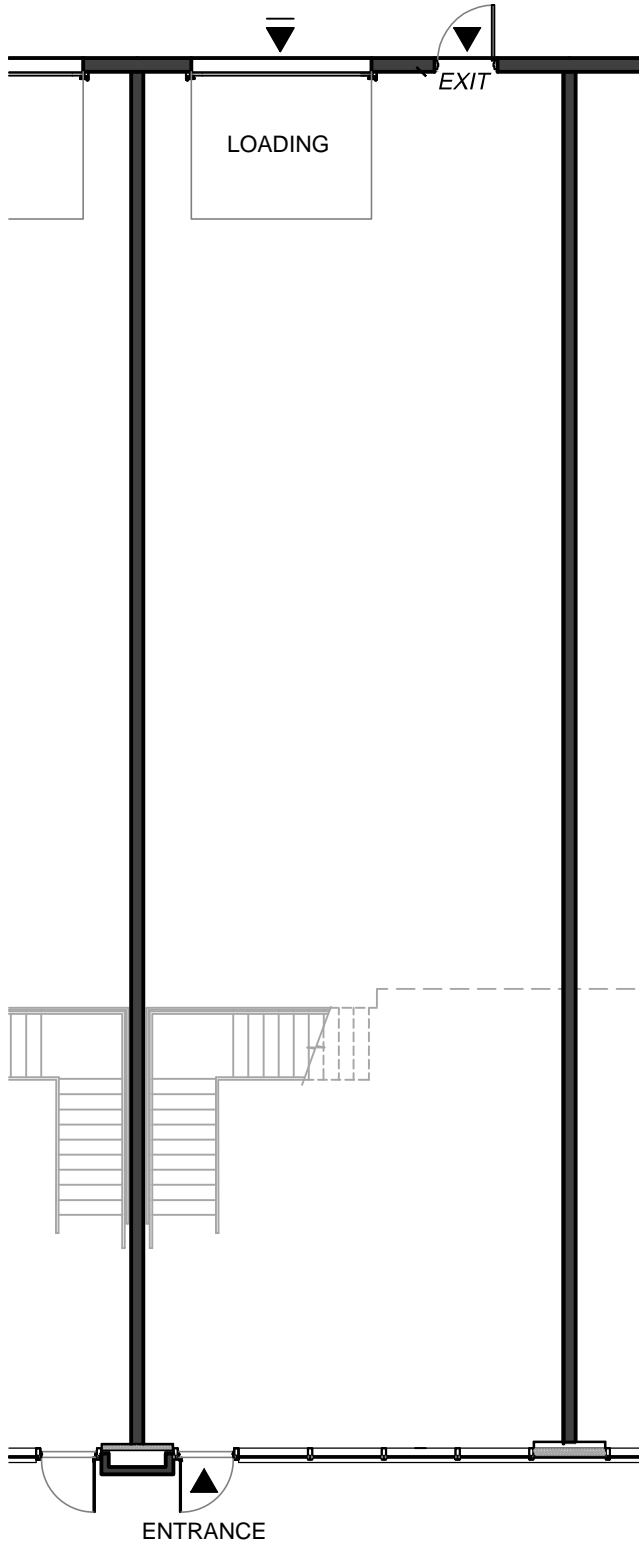
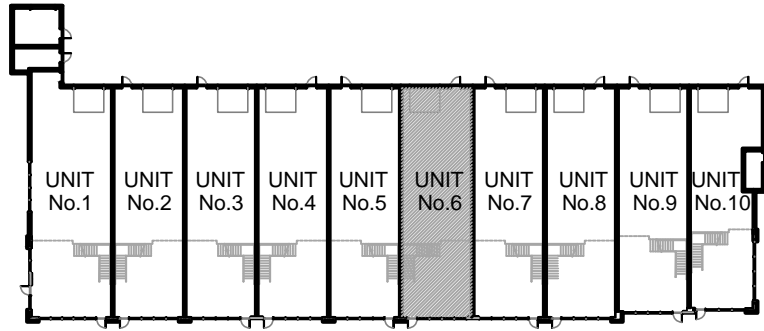
GROUND FLOOR PLAN



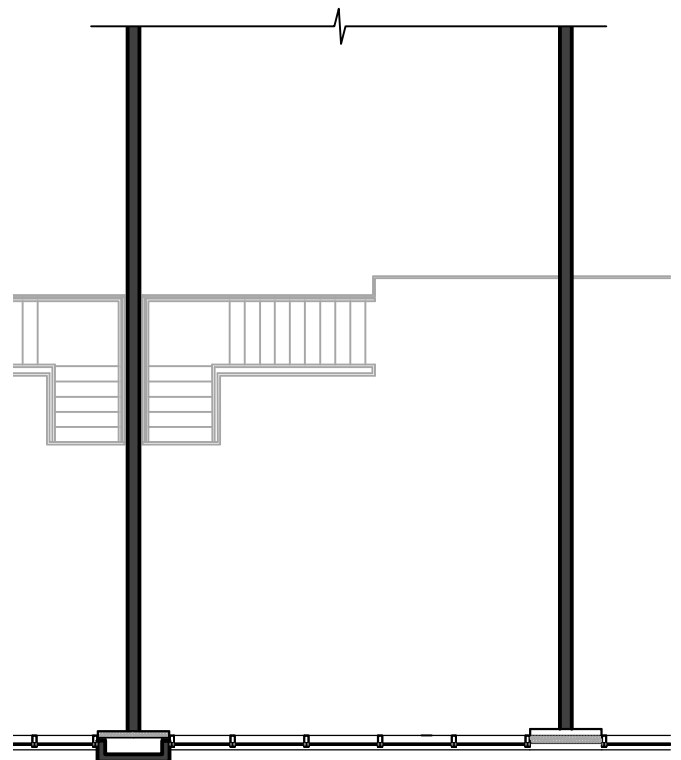
MEZZANINE LEVEL PLAN

GROSS UNIT AREA		
GROUND FLOOR	MEZZANINE	TOTAL
1,873.50 SF / 174.05 SM	531.87 SF / 49.41 SM	2,405.37 SF / 223.46 SM

195 MOSTAR ST., WHITCHURCH-STOUFFVILLE, ON
 BUILDING 'A', UNIT No.6



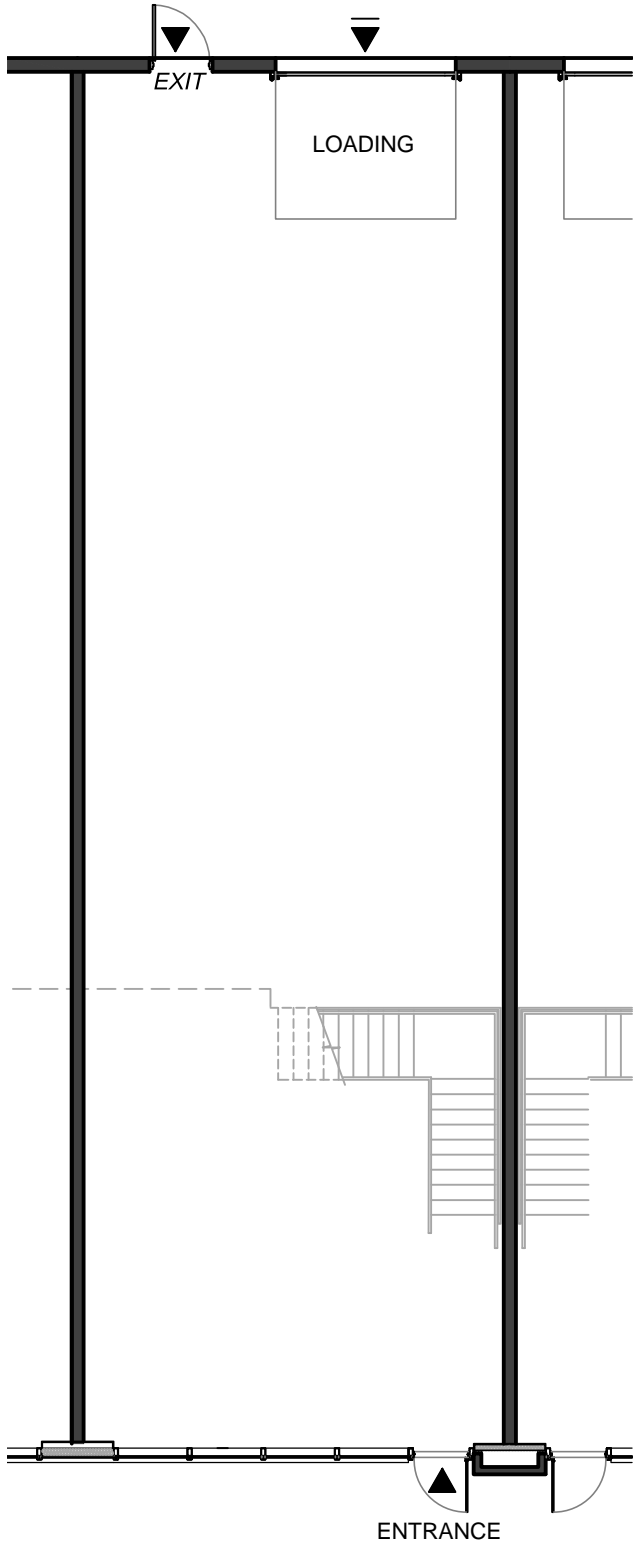
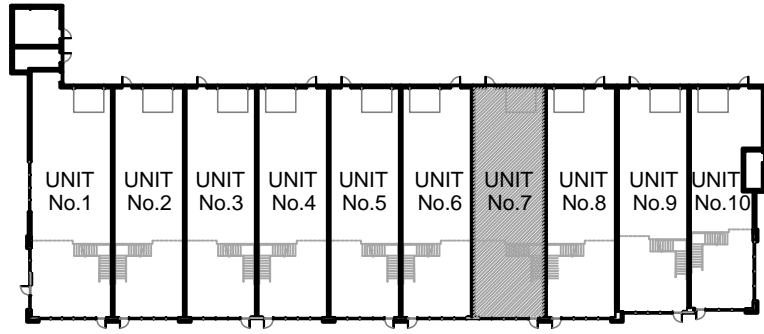
GROUND FLOOR PLAN



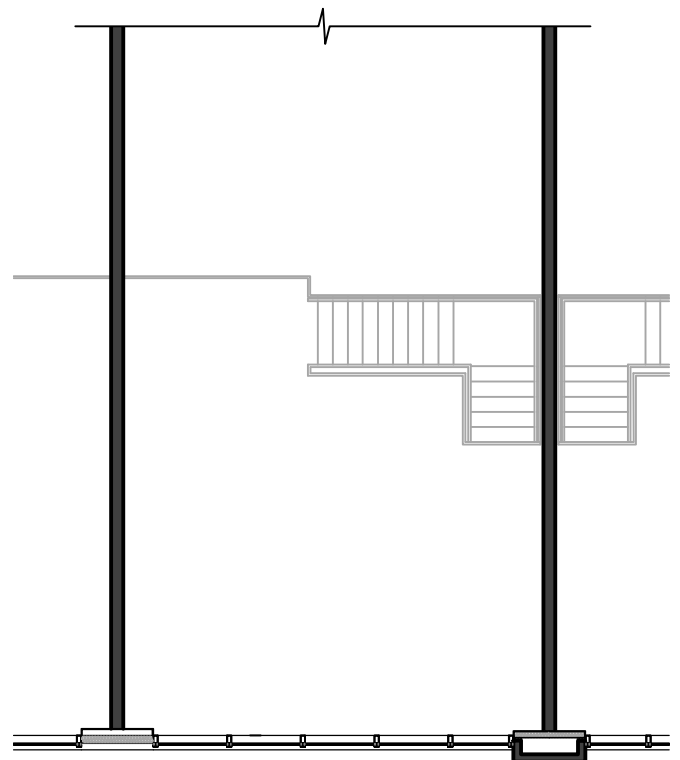
MEZZANINE LEVEL PLAN

GROSS UNIT AREA		
GROUND FLOOR	MEZZANINE	TOTAL
1,873.50 SF / 174.05 SM	531.87 SF / 49.41 SM	2,405.37 SF / 223.46 SM

195 MOSTAR ST., WHITCHURCH-STOUFFVILLE, ON
 BUILDING 'A', UNIT No.7



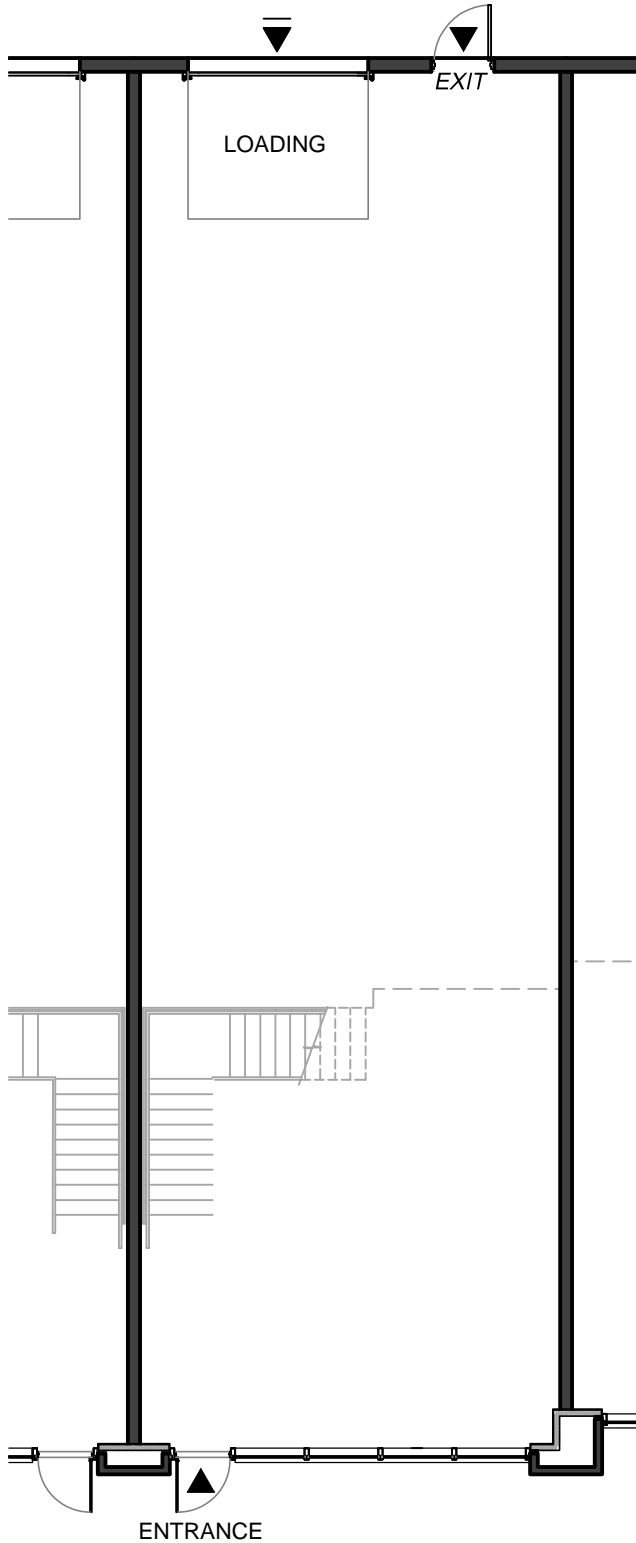
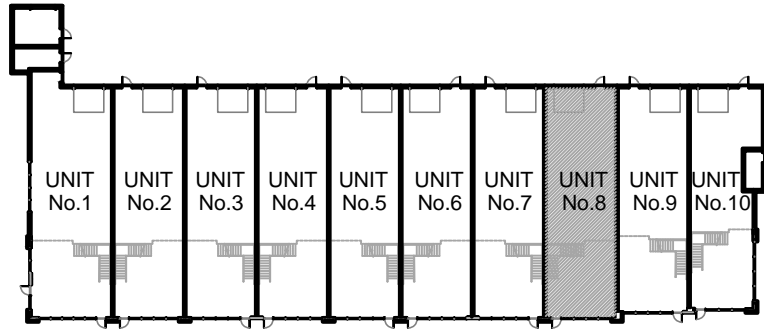
GROUND FLOOR PLAN



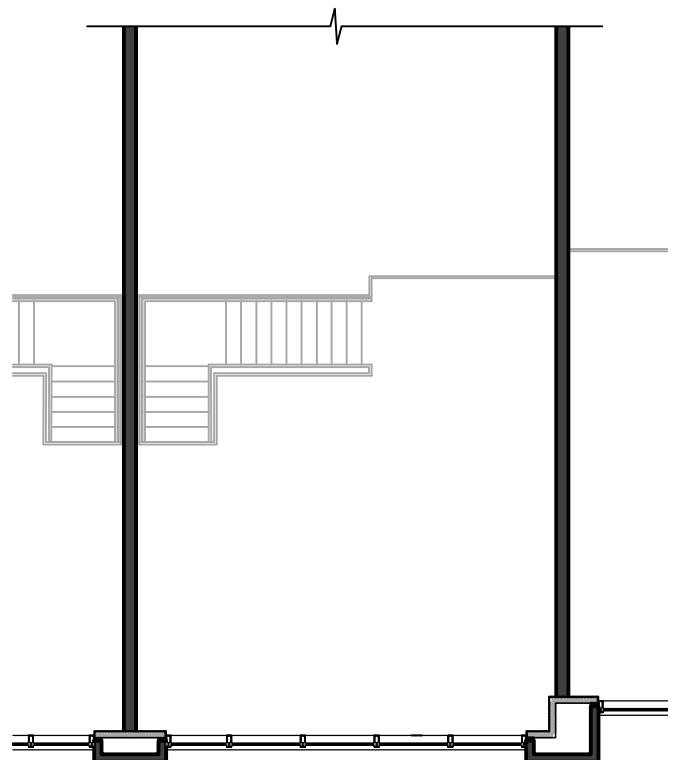
MEZZANINE LEVEL PLAN

GROSS UNIT AREA		
GROUND FLOOR	MEZZANINE	TOTAL
1,873.50 SF / 174.05 SM	531.87 SF / 49.41 SM	2,405.37 SF / 223.46 SM

195 MOSTAR ST., WHITCHURCH-STOUFFVILLE, ON
 BUILDING 'A', UNIT No.8



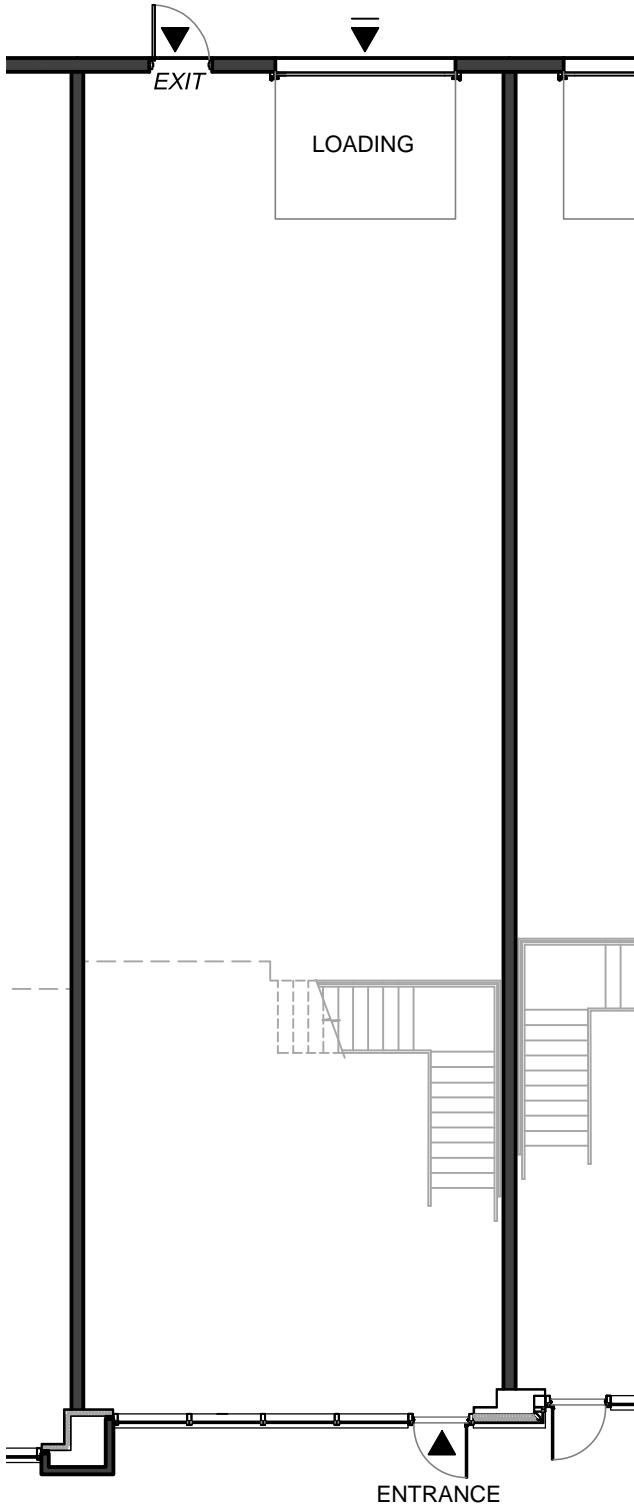
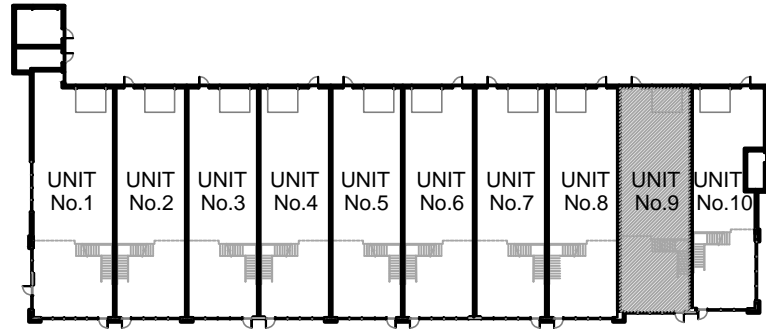
GROUND FLOOR PLAN



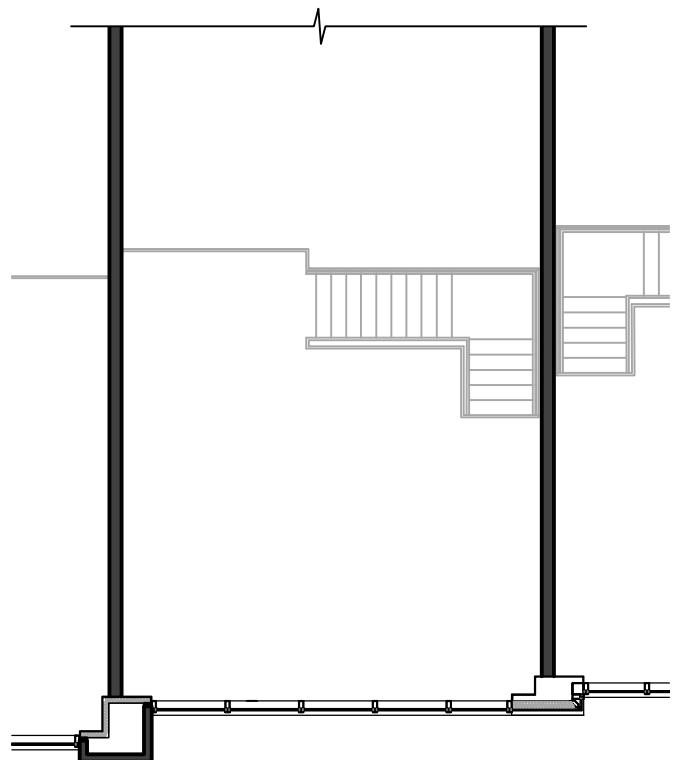
MEZZANINE LEVEL PLAN

GROSS UNIT AREA		
GROUND FLOOR	MEZZANINE	TOTAL
1,873.50 SF / 174.05 SM	531.87 SF / 49.41 SM	2,405.37 SF / 223.46 SM

195 MOSTAR ST., WHITCHURCH-STOUFFVILLE, ON
 BUILDING 'A', UNIT No.9



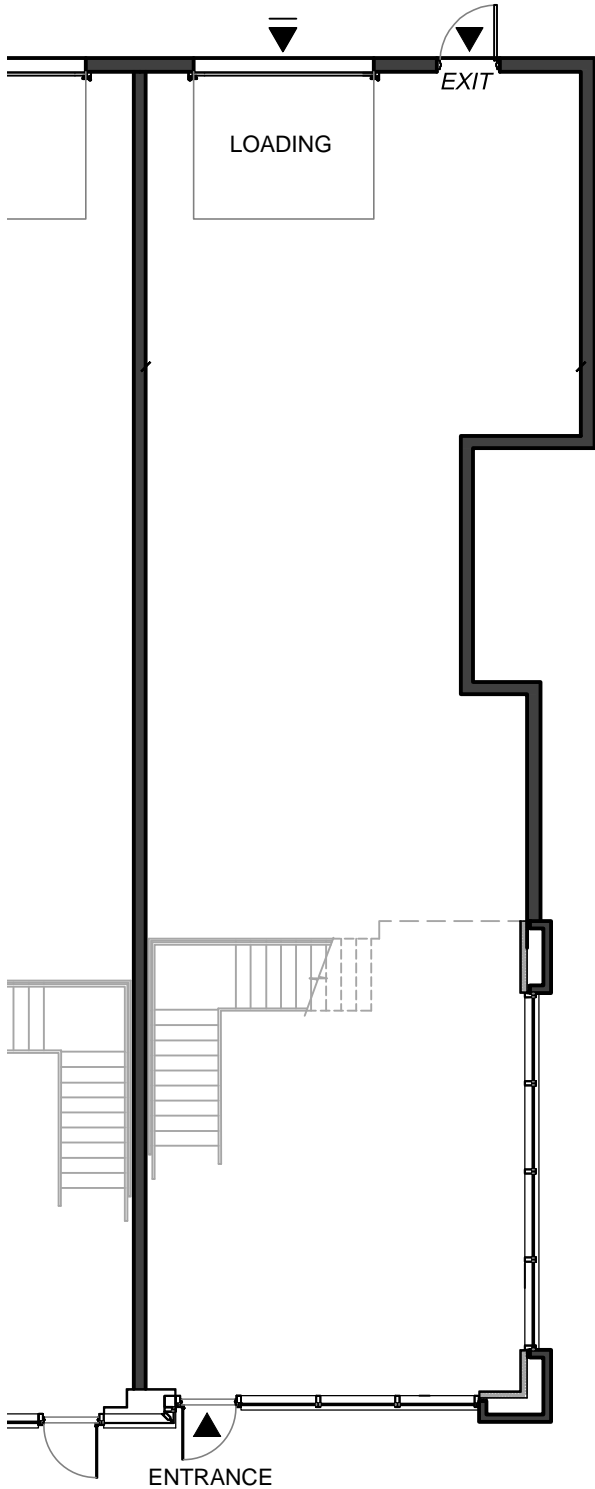
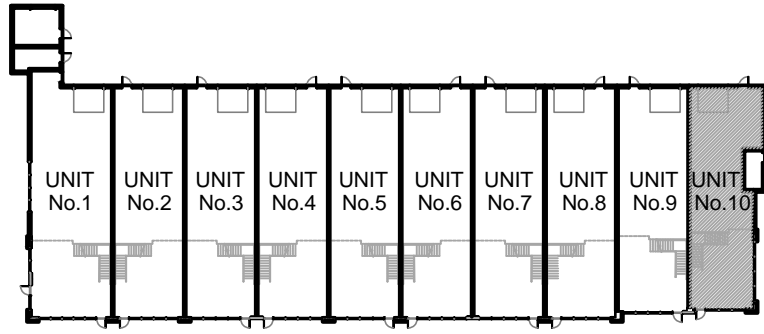
GROUND FLOOR PLAN



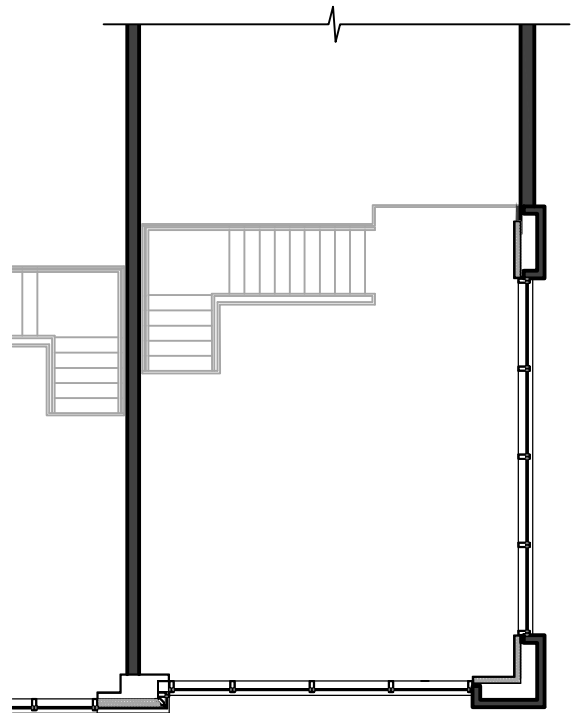
MEZZANINE LEVEL PLAN

GROSS UNIT AREA		
GROUND FLOOR	MEZZANINE	TOTAL
1,873.50 SF / 174.05 SM	531.87 SF / 49.41 SM	2,405.37 SF / 223.46 SM

195 MOSTAR ST., WHITCHURCH-STOUFFVILLE, ON
 BUILDING 'A', UNIT No.10



GROUND FLOOR PLAN



MEZZANINE LEVEL PLAN

GROSS UNIT AREA		
GROUND FLOOR	MEZZANINE	TOTAL
1,672.80 SF / 155.40 SM	502.47 SF / 46.68 SM	2,175.27 SF / 202.08 SM